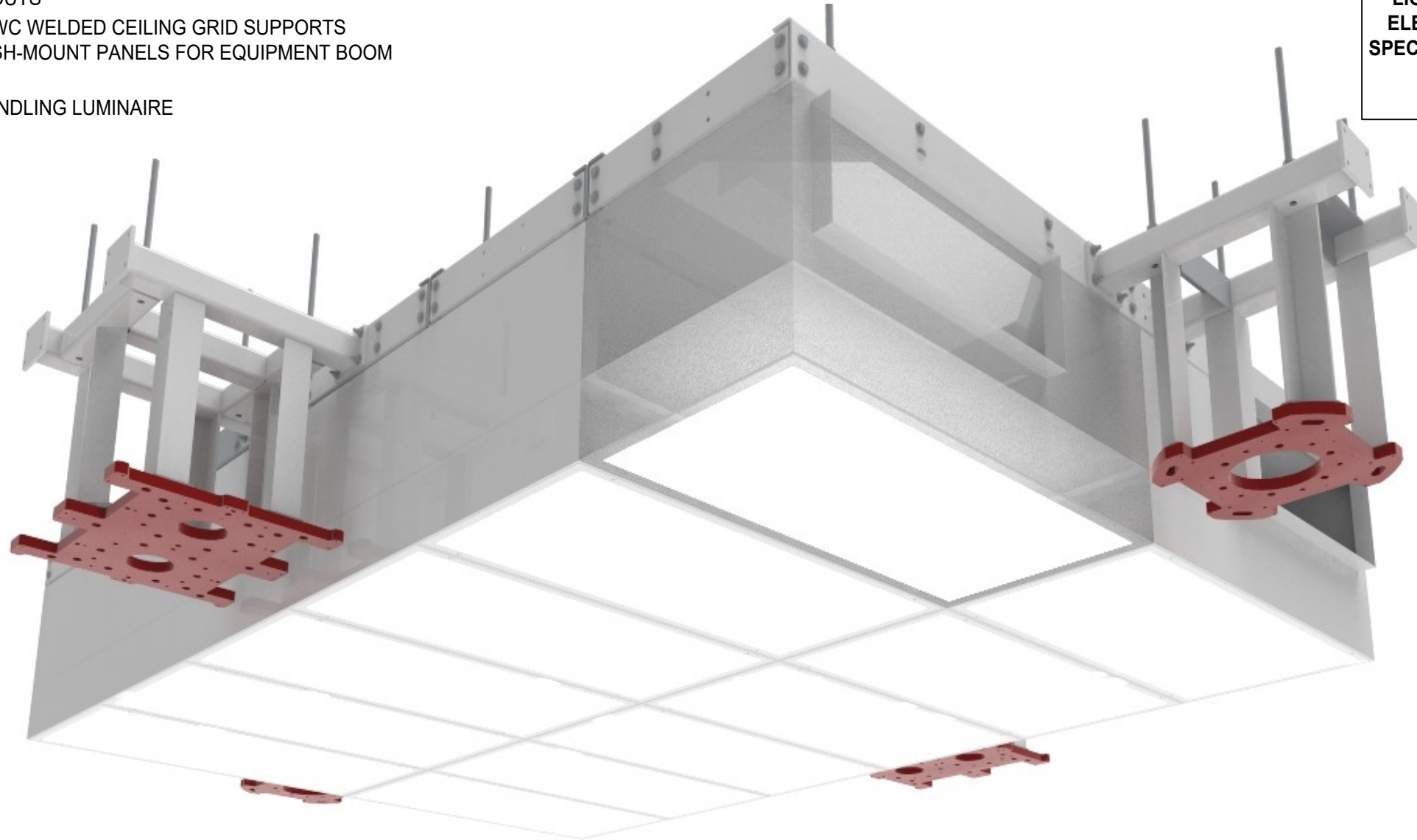


ULTRASUITE® + STRUCTURE

OPERATING ROOM DIFFUSER SYSTEM WITH INTEGRATED LED LIGHTING AND ALUMINUM STRUCTURAL SUPPORT EXAMPLE SYSTEM FOR A TRADITIONAL OR

FEATURES:

- LAMINAR FLOW DIFFUSER ARRAY WITH INTEGRATED HIGH-PERFORMANCE LED LIGHTS INSIDE EACH INDIVIDUAL MODULE AND HSS STRUCTURE FULLY CUSTOMIZABLE TO MATCH THE DEMANDING AND OFTEN CROWDED MODERN HOSPITAL AND CLEANROOM CEILING LAYOUTS
- OPTIONAL PERIMETER HGWC WELDED CEILING GRID SUPPORTS ACCESS PANELS AND FLUSH-MOUNT PANELS FOR EQUIPMENT BOOM INTEGRATION
- UL 1598 CERTIFIED, AIR-HANDLING LUMINAIRE



EXAMPLE SYSTEM		
AIRFLOW	2400	CFM
	20	ACH
LIGHTING & ELECTRICAL SPECIFICATIONS	5000K	COLOUR TEMPERATURE
	95	CRI
	100% TO 1%	DIMMING
0-10V		
	277	INCOMING VOLTAGE

PRICE | **CRITICAL ENVIRONMENTS**

Project:

USASA-2-1

276328

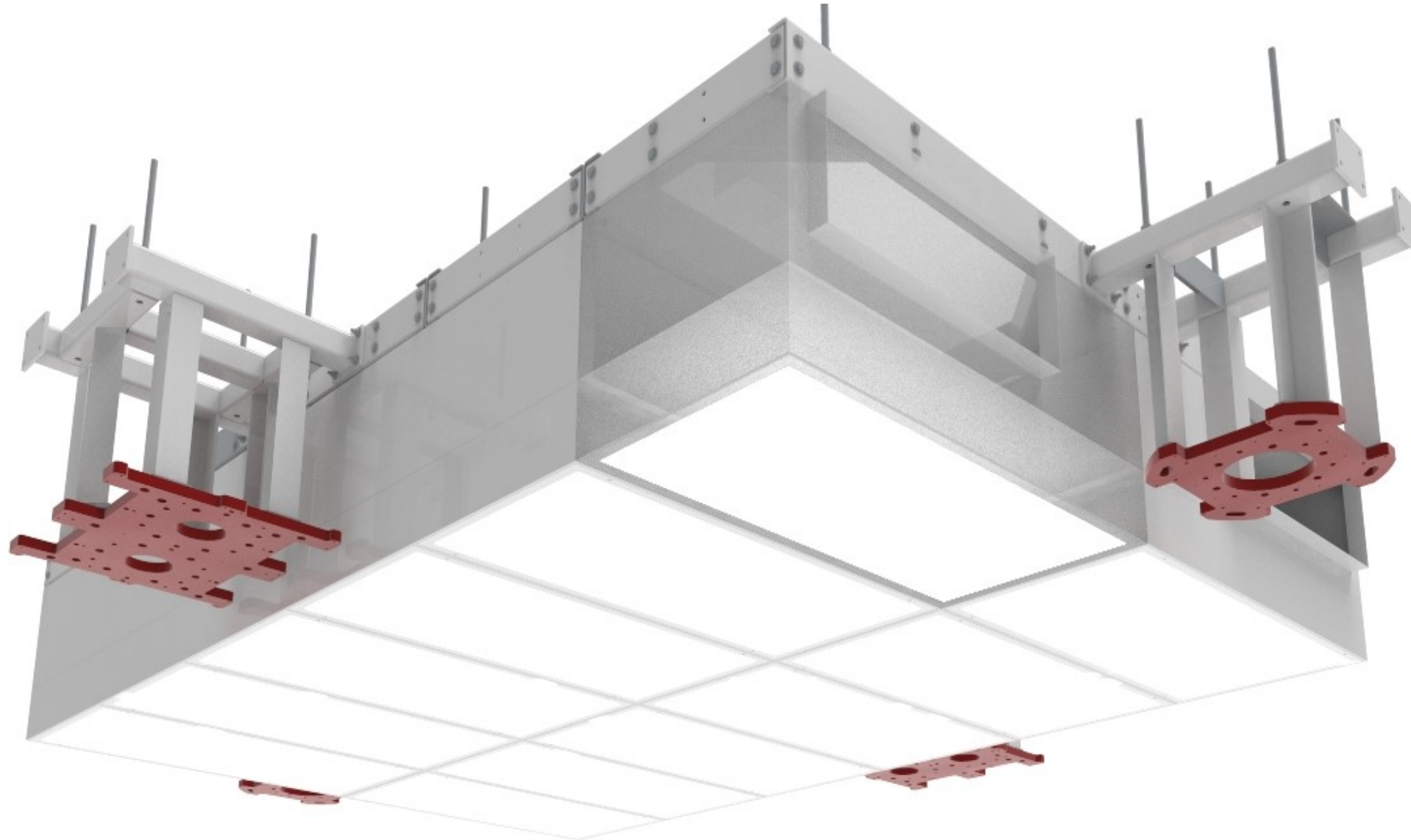
Revision: 2A

05-17-2024



ULTRASUITE® + STRUCTURE

OPERATING ROOM DIFFUSER SYSTEM WITH INTEGRATED LED LIGHTING AND ALUMINUM STRUCTURAL SUPPORT 3D INTERACTIVE MODEL - TRADITIONAL OR



ORDER OF INSTALLATION
(CLICK BUTTONS TO TOGGLE VIEWS)

- ULTRASUITE +STRUCTURE (View A)
- ULTRASUITE +STRUCTURE (View B)
- ULTRASUITE +STRUCTURE (View C)
- HGWC CEILING GRID (View A)
- HGWC CEILING GRID (View B)
- CP-SCF CEILING PANELS
- CP-SC CEILING PANELS
- FINAL INSTALLATION

- USE THE SCROLL WHEEL TO ZOOM
 - HOLD DOWN THE LEFT MOUSE BUTTON TO ROTATE
 - HOLD DOWN CTRL AND LEFT MOUSE BUTTON TO MOVE
- BOOM SUPPORT AND STRUCTURE PROVIDED BY PRICE
BOOM AND BOOM PLATE PROVIDED AND INSTALLED BY OTHERS

CLICK IMAGE TO
ACTIVATE 3D PDF



PRICE | **CRITICAL ENVIRONMENTS**

Project:

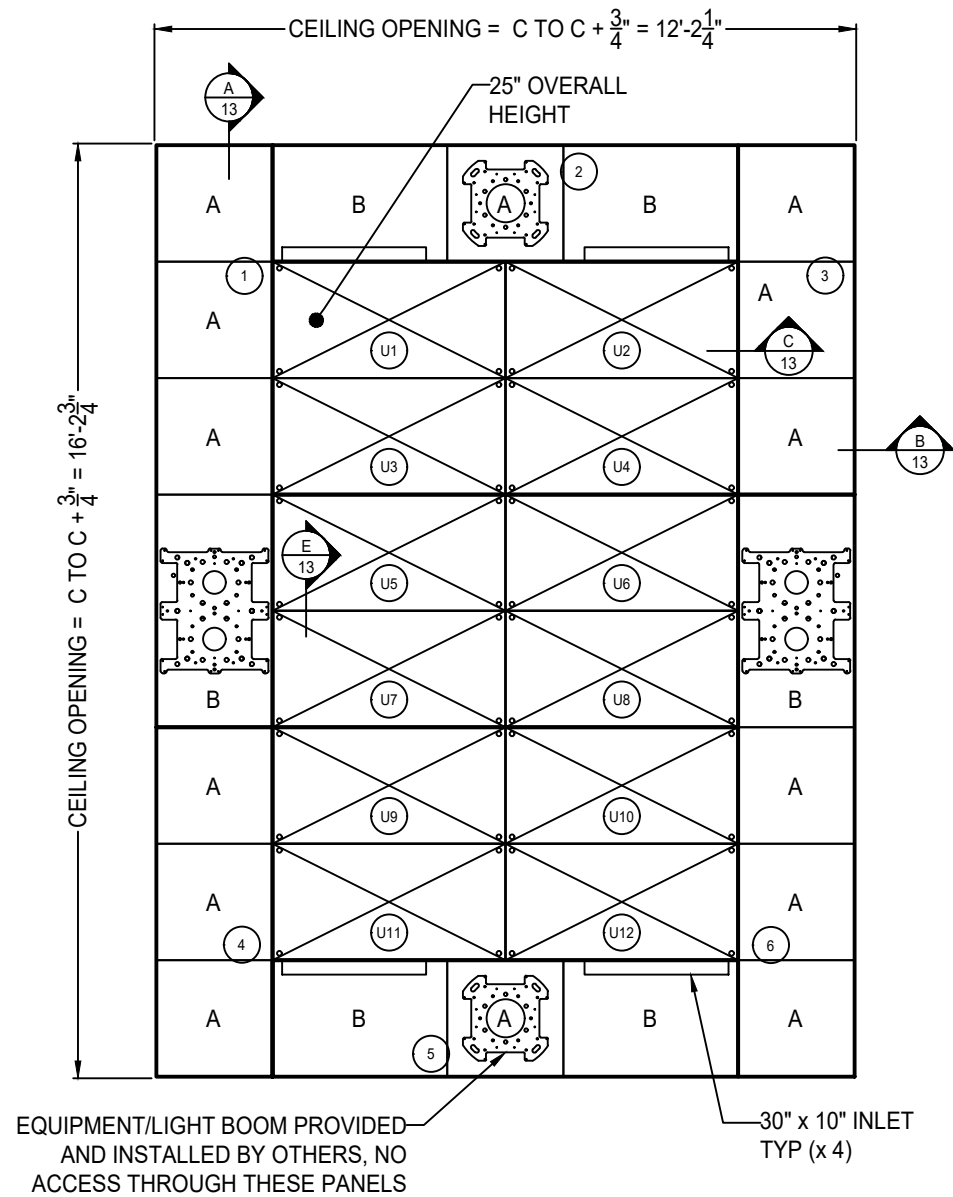
276328

Revision: 2A

05-17-2024

ULTRASUITE® + STRUCTURE

OPERATING ROOM DIFFUSER SYSTEM WITH INTEGRATED LED LIGHTING AND ALUMINUM STRUCTURAL SUPPORT REFLECTED CEILING PLAN - TRADITIONAL OR

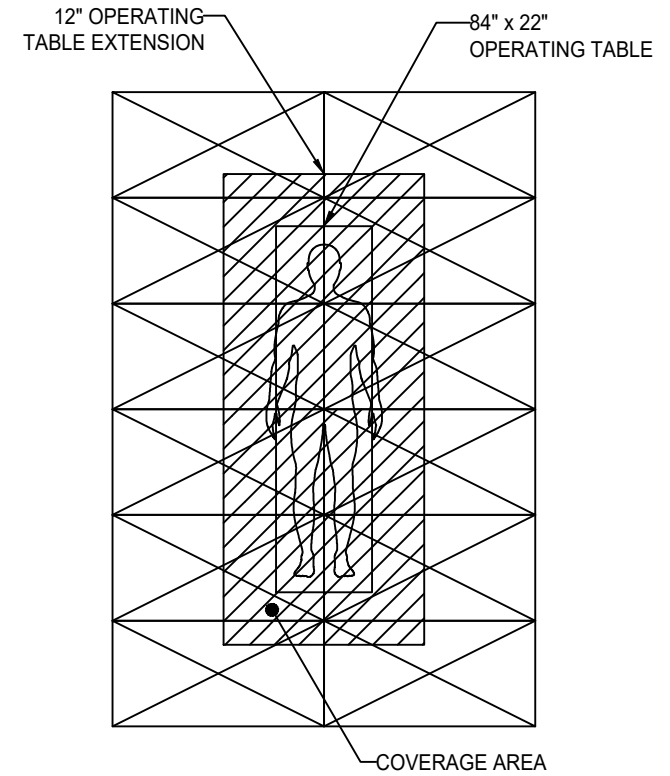


USA AREA = 96 sq. ft. HGWC AREA = 96 sq. ft.

24 x 48 (x12)	A: 24 x 24 (x12) B: 24 x 36 (x4)	A: 24 x 24 (x2) B: 24 x 48 (x2)

- B12 STANDARD WHITE FINISH
- PANEL CUTOUTS FOR BOOMS DONE IN FIELD BY OTHERS
- THE CEILING IS FACTORY PREMANUFACTURED TO SIZES AND TOLERANCE $\pm 1/16"$
- SITE ADJUSTMENTS TO PERIMETER SOFFITS AND/OR DRYWALL MAY BE REQUIRED AND ARE THE RESPONSIBILITY OF THE INSTALLER
- ASHRAE 170 VERIFICATION IS SHOWN TO ASSIST IN PROJECT COORDINATION. FINAL ASHRAE 170 COMPLIANCE, AS WELL AS COMPLIANCE WITH ALL APPLICABLE LOCAL CODES AND REQUIREMENTS REMAINS THE RESPONSIBILITY OF THE EOR OR INSTALLER ON THE PROJECT

ASHRAE 170-2021 TABLE COVERAGE VERIFICATION - TRADITIONAL OR



THIS LAYOUT COMPLIES WITH ASHRAE 170-2021 7.4.1.b.

ASHRAE 170-2021 7.4.1.a. COMPLIANCE AIRFLOW RANGE	ASHRAE 170-2021 7.4.1.b. COMPLIANCE
2400 - 3360 CFM BASED ON 96 SQFT	0% OF THE 12" OPERATING TABLE EXTENSION USED FOR NON DIFFUSER USES

ASHRAE 170-2021	
7.4.1.a. - THE AIRFLOW SHALL BE UNIDIRECTIONAL, DOWNWARDS, AND THE AVERAGE VELOCITY OF THE DIFFUSERS SHALL BE 25 TO 35 CFM/SQFT (127 TO 178 L/S/QM). THE DIFFUSERS SHALL BE CONCENTRATED TO PROVIDE AN AIRFLOW PATTERN OVER THE PATIENT AND SURGICAL TEAM.	
7.4.1.b. - THE COVERAGE AREA OF THE PRIMARY SUPPLY DIFFUSER ARRAY SHALL EXTEND A MINIMUM OF 12 IN. (305 mm) BEYOND THE FOOTPRINT OF THE SURGICAL TABLE ON EACH SIDE. WITHIN THE PORTION OF THE PRIMARY SUPPLY DIFFUSER ARRAY THAT CONSISTS OF AN AREA ENCOMPASSING 12 IN. (305mm) ON EACH SIDE OF THE FOOTPRINT OF THE SURGICAL TABLE, NO MORE THAN 30% OF THIS PORTION OF THE PRIMARY SUPPLY DIFFUSER ARRAY AREA SHALL BE USED FOR NON DIFFUSER USES SUCH AS LIGHTS, GAS COLUMNS, EQUIPMENT BOOMS, ACCESS PANELS, SPRINKLERS, ETC.	

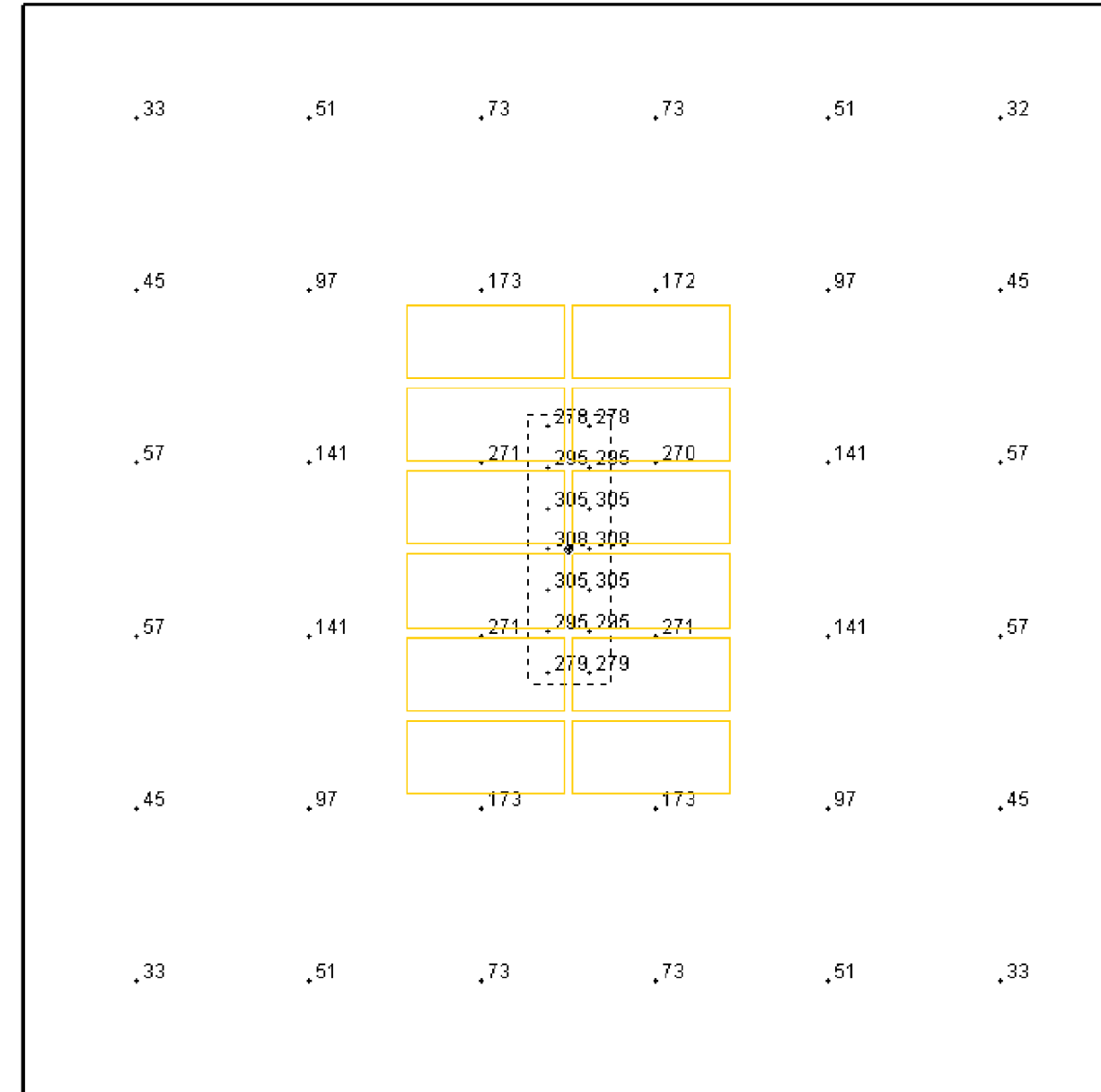
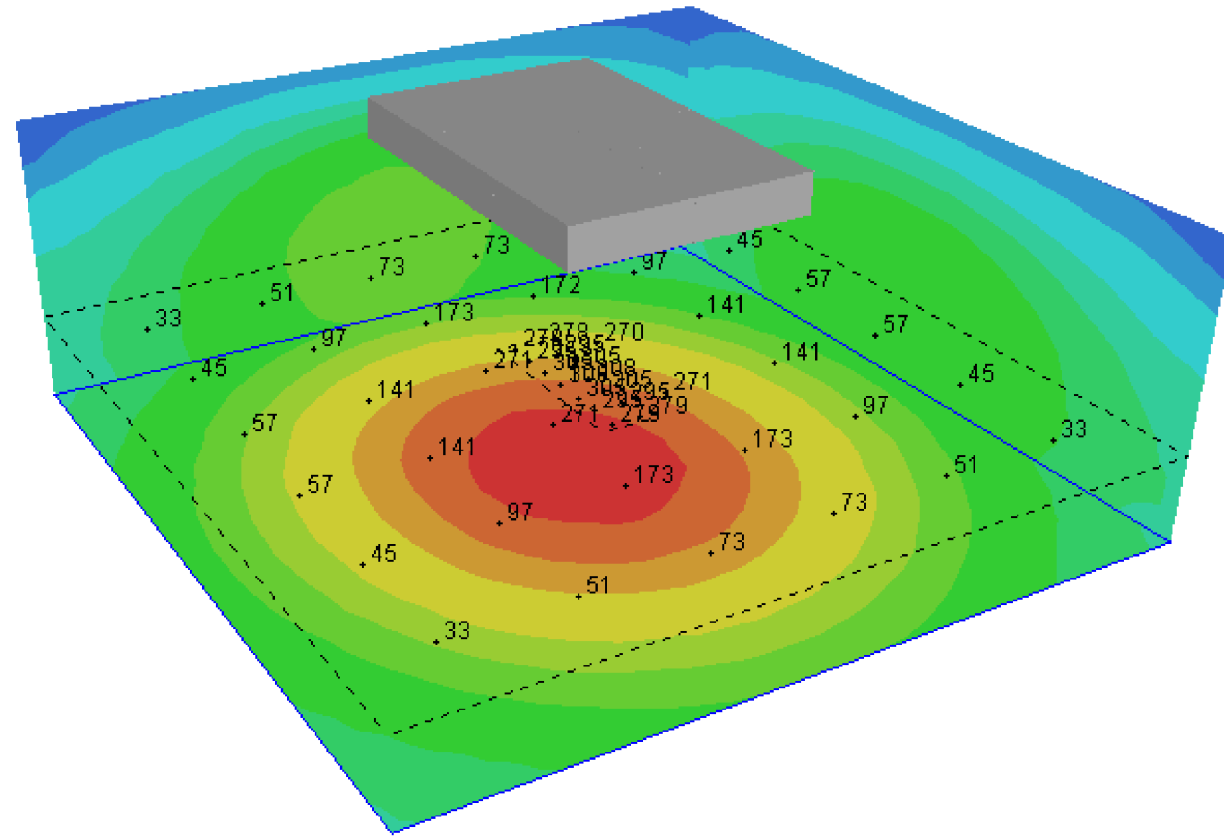
PRICE | **CRITICAL ENVIRONMENTS**

Project: _____

USASA-2-1	276328	Revision: 2A	05-17-2024
-----------	--------	--------------	------------

ULTRASUITE® + STRUCTURE

OPERATING ROOM DIFFUSER SYSTEM WITH INTEGRATED LED LIGHTING AND ALUMINUM STRUCTURAL SUPPORT PHOTOMETRIC ANALYSIS - TRADITIONAL OR



OPERATING TABLE		OPERATING AREA	
MAXIMUM	308 fc	MAXIMUM	271 fc
AVERAGE	295 fc	AVERAGE	104 fc

LUMINAIRE HEIGHT: 10 FT
CALCULATION ZONE: 3 FT



Project:

276328

Revision: 2A

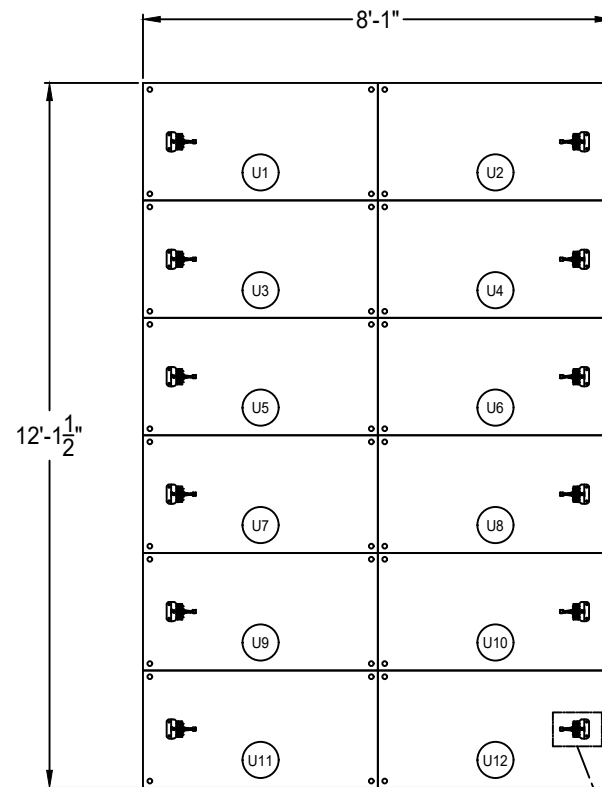
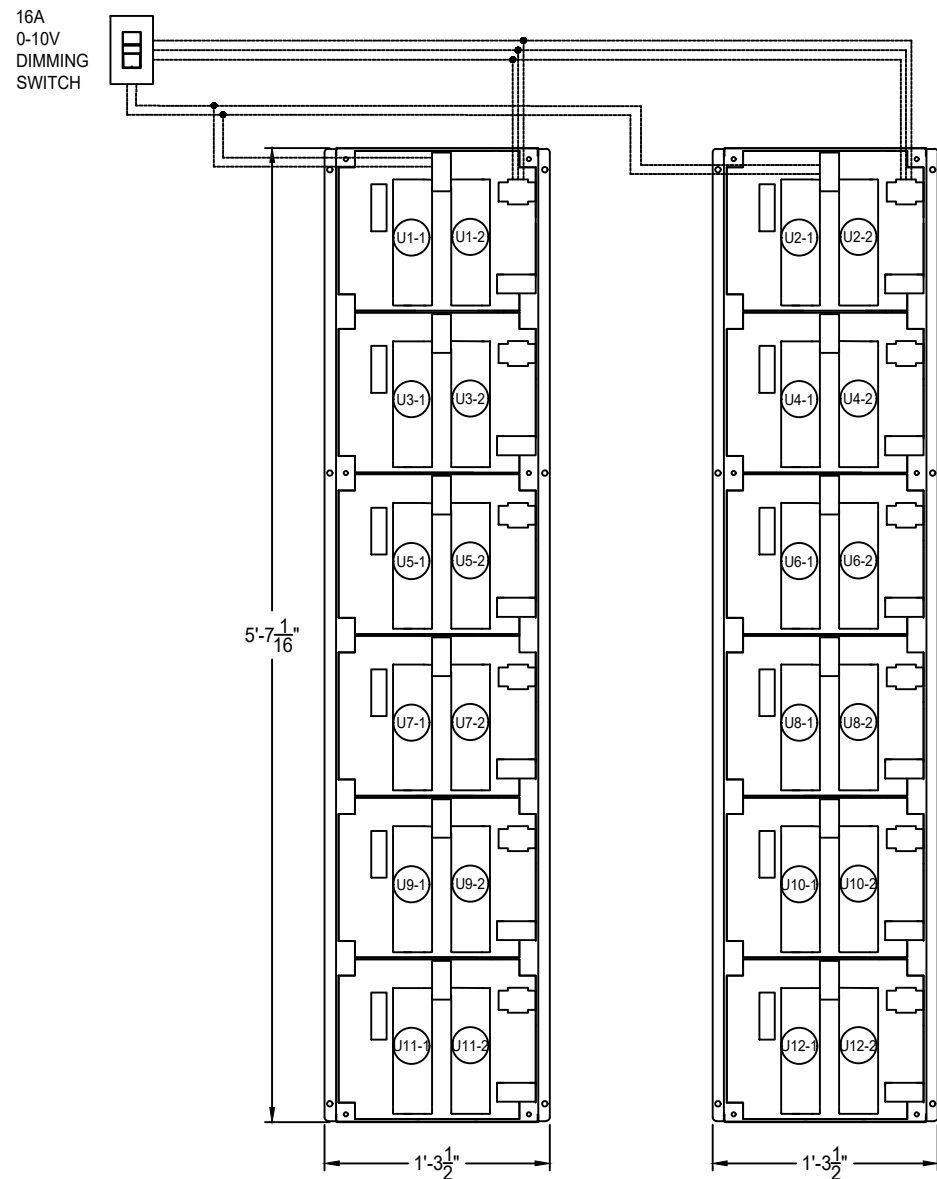
05-17-2024

- PHOTOMETRIC ANALYSIS BASED ON A 3' CALCULATION ZONE, 720 ROOM SQFT & 10' CEILING HEIGHT.
- ANSII/IES RP-29-16 RECOMMENDS 3000 LUX (279 FC) AT THE OPERATING TABLE
- THE CALCULATED VALUES REFLECT ADDITIONAL SPACE LIGHTING BY OTHERS.
- LIGHTING ANALYSIS HAS BEEN PERFORMED USING THIRD PARTY LAB TESTED .IES FILES.
- THIS LAYOUT REFLECTS TWO ROWS OF 5000K, 90+ CRI LEDS PER MODULE. A THIRD ROW, HIGH OUTPUT OPTION IS AVAILABLE.
- LIGHTING CALCULATIONS ARE ESTIMATED USING BEST PRACTICE AND MAY DIFFER SLIGHTLY FROM ACTUAL FIELD CONDITIONS.

ULTRASUITE® + STRUCTURE

OPERATING ROOM DIFFUSER SYSTEM WITH INTEGRATED LED LIGHTING AND ALUMINUM STRUCTURAL SUPPORT

○ URDC ULTRA REMOTE DRIVER CABINETS - SINGLE DIMMING ZONE (100 TO 1% DIMMING) - TRADITIONAL OR



CABINET 1 - 1 OF 2 - CONTROLS 6 MODULES WITH 12 DRIVERS

DRIVER TAG	LED WATTAGE	DRIVER TAG	LED WATTAGE
U1-1	88	U1-2	88
U3-1	88	U3-2	88
U5-1	88	U5-2	88
U7-1	88	U7-2	88
U9-1	88	U9-2	88
U11-1	88	U11-2	88
TOTAL WATTAGE:	AC CURRENT:		
1056	4.8A/277VAC		

CABINET 2 - 2 OF 2 - CONTROLS 6 MODULES WITH 12 DRIVERS

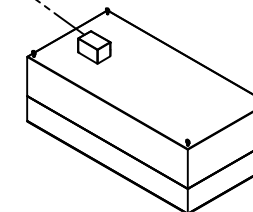
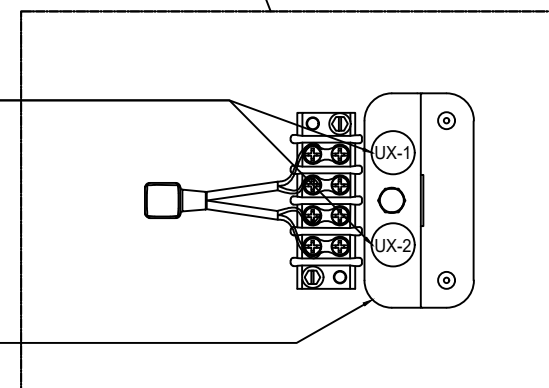
DRIVER TAG	LED WATTAGE	DRIVER TAG	LED WATTAGE
U2-1	88	U2-2	88
U4-1	88	U4-2	88
U6-1	88	U6-2	88
U8-1	88	U8-2	88
U10-1	88	U10-2	88
U12-1	88	U12-2	88
TOTAL WATTAGE:	AC CURRENT:		
1056	4.8A/277VAC		



EACH STANDARD MODULE COMES WITH TWO ROWS OF LEDS THAT EACH REQUIRE ONE (+ & -) LOW VOLTAGE FIELD CONNECTION AND ARE NOTED BY A "UX-X" LABEL. A THIRD ROW, HIGH OUTPUT OPTION IS AVAILABLE IF REQUIRED.

EACH STANDARD MODULE COMES WITH 2 ROWS OF LED LIGHTS AND EACH ROW OF LIGHTS IS NOTED BY A "UX-X" LABEL. THE "UX" CORRESPONDS TO AN INDIVIDUAL MODULE REFERENCED IN THE RCP AND THE "-1" AND "-2" CORRESPONDS TO THE ROW OF LEDS FOR THAT MODULE. EACH "UX-X" LABEL CORRESPONDS TO ONE (+ & -) LOW VOLTAGE WIRE TO BE FIELD CONNECTED TO URDC DRIVER CABINET AS PER THE MATCHING LABELS. EACH 100W DRIVER CAN POWER 1 ROW OF LEDS (ONE HALF OF A MODULE) AND EACH 600W DRIVER CAN CONTROL 6 ROWS OF LEDS (3 MODULES)

EACH MODULE COMES WITH A TOP MOUNTED TERMINAL BLOCK ENCLOSURE (COVER NOT SHOWN) FOR LOW VOLTAGE FIELD CONNECTIONS. QUICK CONNECT FITTING IS SEALED THROUGH PLENUM AND ALL INTERNAL WIRING IS COMPLETED IN THE FACTORY. EACH ROW OF LEDS REQUIRES ONE (+&-) LOW VOLTAGE FIELD CONNECTIONS (TWO PER MODULE)



PRICE | **CRITICAL ENVIRONMENTS**

Project:

276328

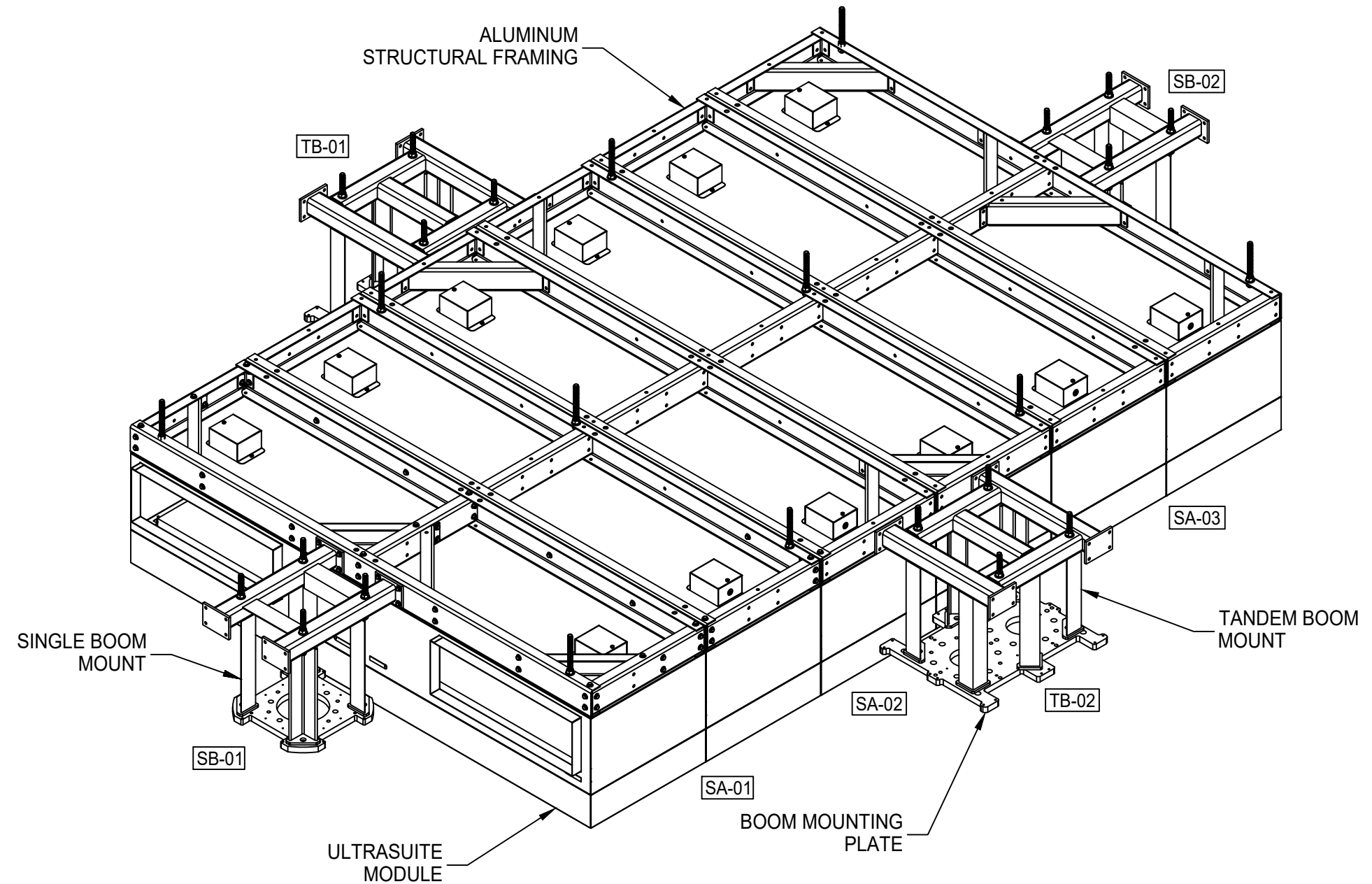
Revision: 2A

05-17-2024

• INSTALLATION WORK AND ELECTRICAL WIRING MUST BE COMPLETED BY A CERTIFIED ELECTRICIAN AND/OR QUALIFIED PERSON(S) IN ACCORDANCE WITH APPLICABLE ELECTRICAL CODES AND STANDARDS

ULTRASUITE® + STRUCTURE

OPERATING ROOM DIFFUSER SYSTEM WITH INTEGRATED LED LIGHTING AND ALUMINUM STRUCTURAL SUPPORT STRUCTURAL DETAILS - PAGE 1 OF 6 - ISOMETRIC VIEW - TRADITIONAL OR



- THE PROJECT ADDRESS IS 20 CRESTRIDGE DRIVE, SUWANNEE, GA 30024.
- THE USASA SUSPENDED FRAME IS DESIGNED FOR THE FOLLOWING CRITERIA:
 - SEISMIC PARAMETERS: $I_p = \text{TBD}$ $S_s = \text{TBD}$ $S_{DS} = \text{TBD}$ $S_1 = \text{TBD}$
 - SUPERIMPOSED DEAD LOAD: 792 lbs
 - SINGLE BOOM MOUNT LOADS: 1,100 lbf AND 5,650 ft-lbs
 - TANDEM BOOM MOUNT LOADS: 2,200 lbf AND 11,300 ft-lbs
- THE FOLLOWING GRADES OF MATERIAL WILL BE USED IN THE CONSTRUCTION OF THIS SUSPENDED SYSTEM:
 - ULTRASUITE MODULES: ASTM A653 CS TYPE B
 - ALUMINUM COLD FORMED MEMBERS: 5052-H32 ALUMINUM ALLOY
 - STRUCTURAL BOLTS: SAE J429 GR. 5, ZINC-PLATED
 - BOOM MOUNTS
 - HSS BEAMS: ASTM A500 GR. B OR C
 - ROLLED ANGLES: A36 OR EQUIVALENT
 - STRUCTURAL PLATES: A36 OR EQUIVALENT
- **(NOTE: BOOM MOUNT PLATES PROVIDED BY OTHERS)**
- THREADED ROD HANGERS: 5/8" THREADED ROD (PROVIDED BY OTHERS) ($F_{YMIN} = 55\text{KSI}$)
(NOTE: ANCHOR TO BUILDING STRUCTURE AND DETAILED DESIGN OF SUSPENSION SYSTEM IS BY OTHERS. REFER TO SUSPENSION LAYOUT PAGE FOR FURTHER DETAILS)
- BOOM MOUNT STRUCTURAL STEEL TO BE PAINTED WITH A CORROSION RESISTANT PAINT SYSTEM.

PRICE | **CRITICAL ENVIRONMENTS**

Project:

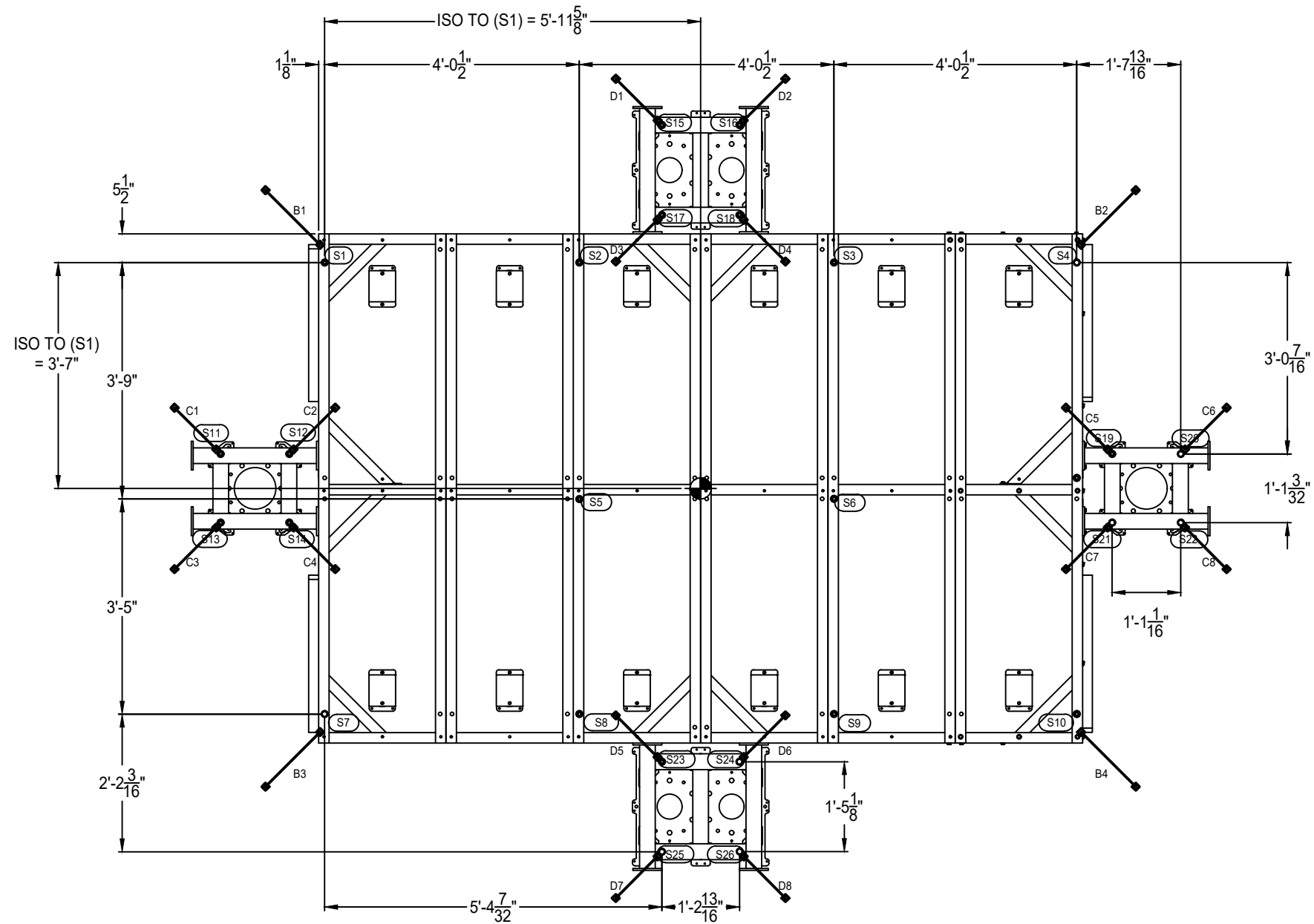
276328

Revision: 2A

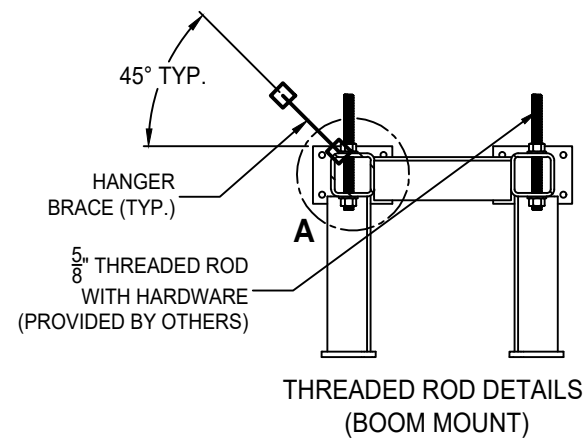
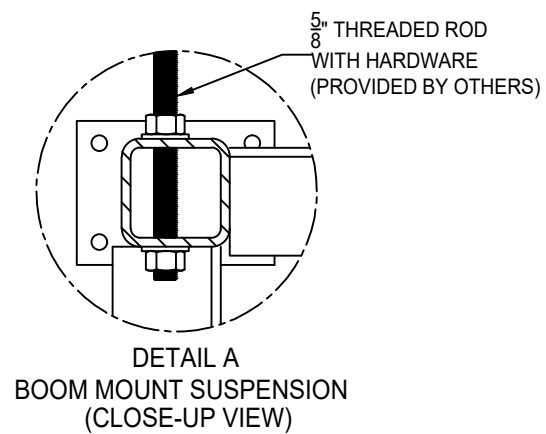
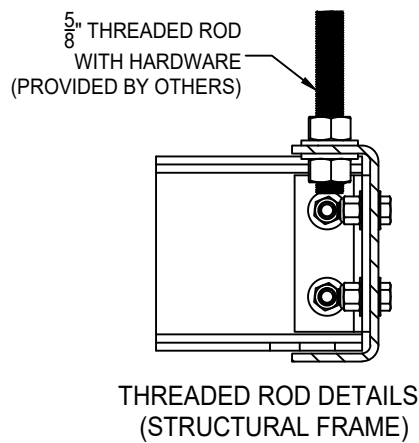
05-17-2024

ULTRASUITE[®] + STRUCTURE

OPERATING ROOM DIFFUSER SYSTEM WITH INTEGRATED LED LIGHTING AND ALUMINUM STRUCTURAL SUPPORT STRUCTURAL DETAILS - PAGE 2 OF 6 - SUSPENSION LAYOUT - TRADITIONAL OR



ANCHORING AND SUSPENSION DETAILS TO BE PROVIDED IN PHASE 3 SUBMITTAL



PRICE | CRITICAL ENVIRONMENTS

Project:

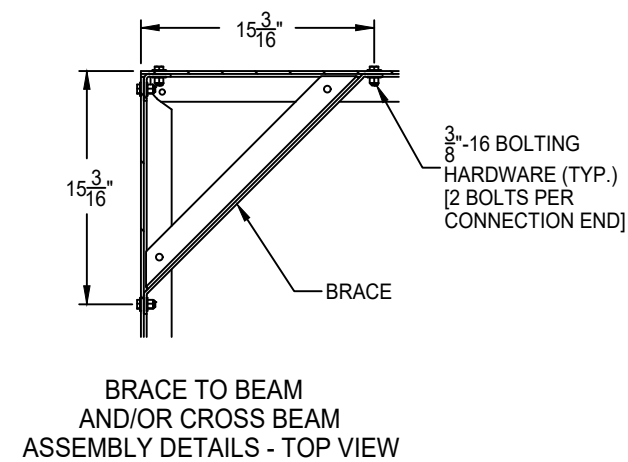
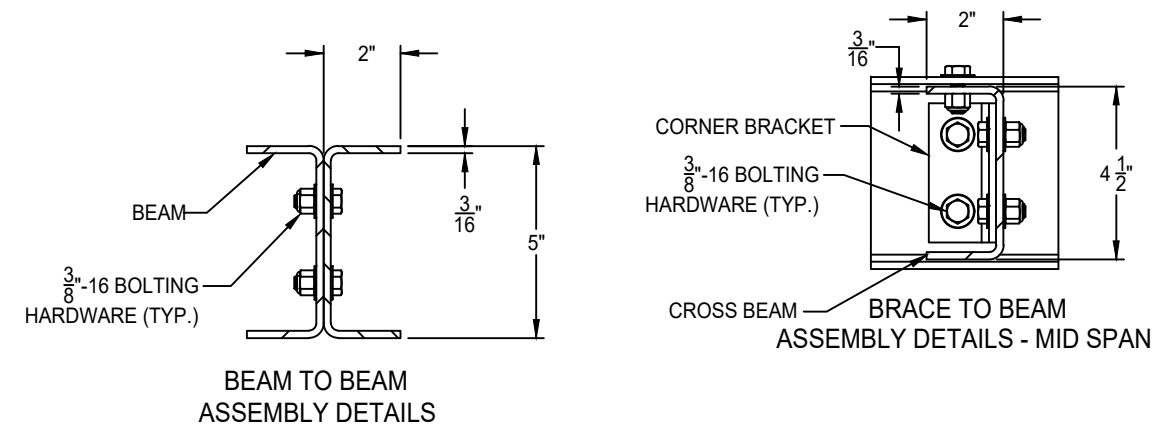
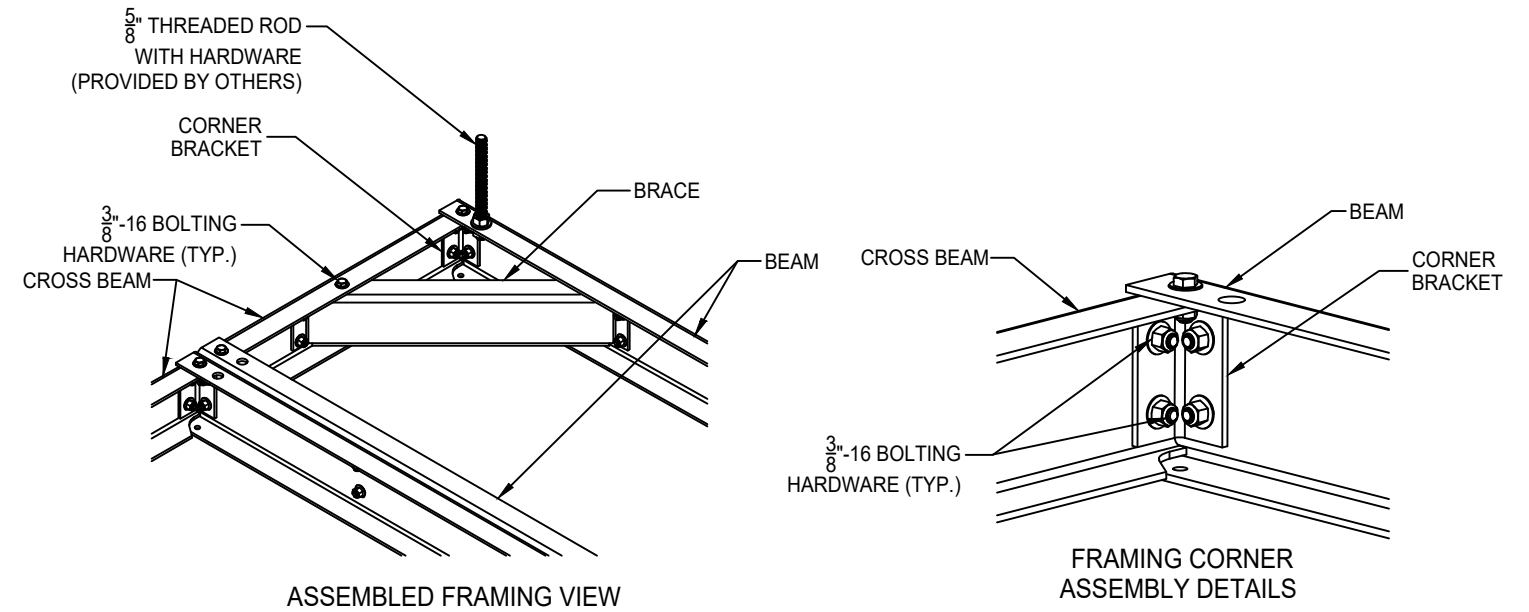
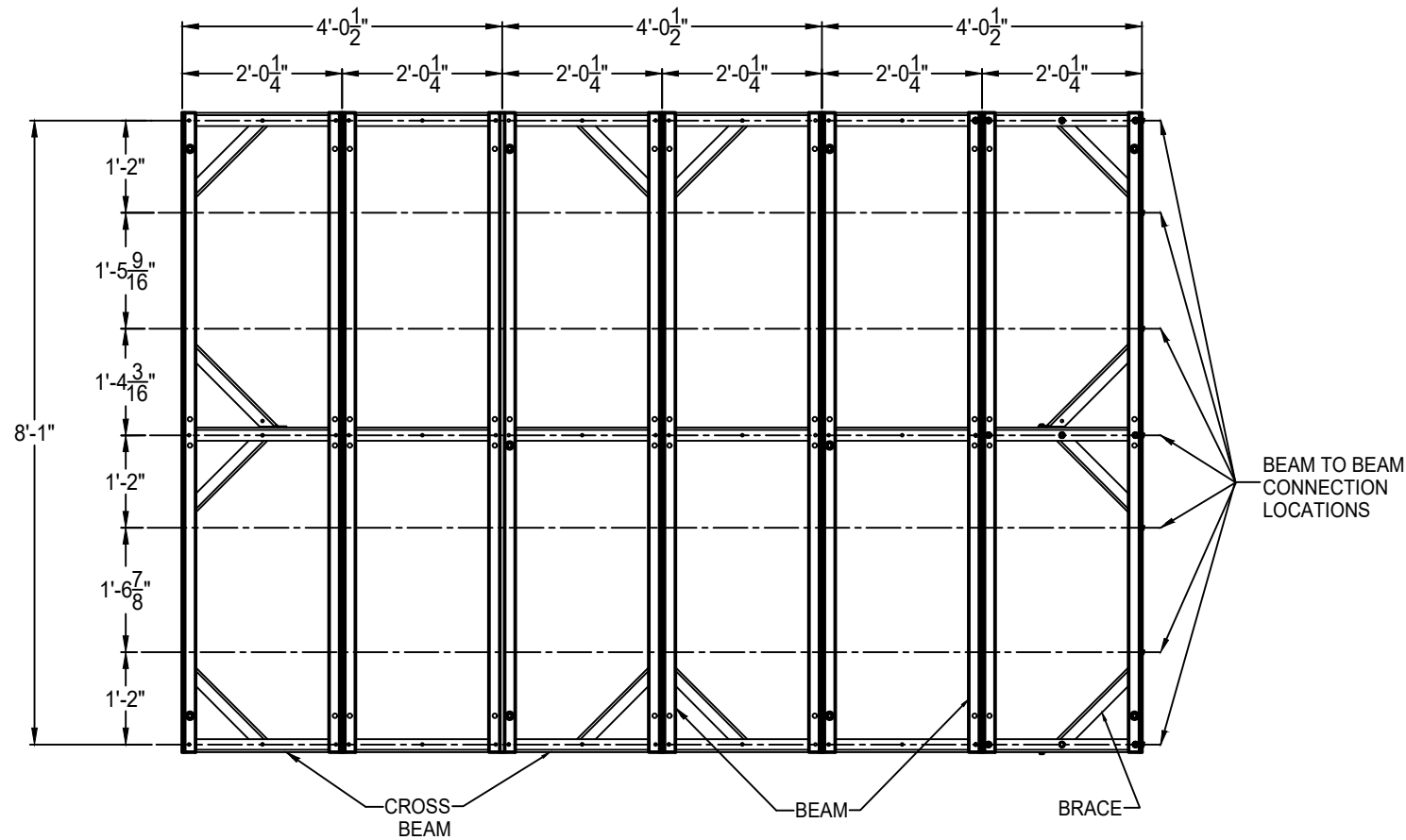
276328

Revision: 2A

05-17-2024

ULTRASUITE® + STRUCTURE

OPERATING ROOM DIFFUSER SYSTEM WITH INTEGRATED LED LIGHTING AND ALUMINUM STRUCTURAL SUPPORT STRUCTURAL DETAILS - PAGE 3 OF 6 - ALUMINUM FRAMING - TRADITIONAL OR



MEMBER NAME	SHAPE	PROFILE	MATERIAL
BEAM	C5" X 2" X $\frac{3}{16}$ "		ALUMINUM 5052H32
CROSS BEAM	C4- $\frac{1}{2}$ " X 2" X $\frac{3}{16}$ "		
BRACE	C4" X 2" X $\frac{3}{16}$ "		
CORNER BRACKET	L1 $\frac{3}{4}$ " X 1 $\frac{3}{4}$ " X $\frac{3}{16}$ "		

PRICE | **CRITICAL ENVIRONMENTS**

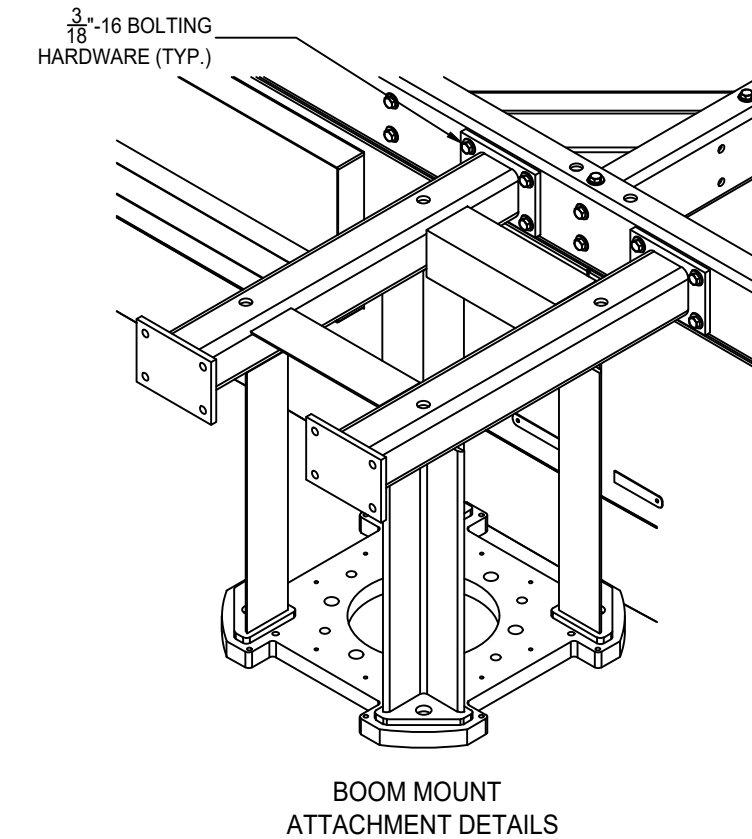
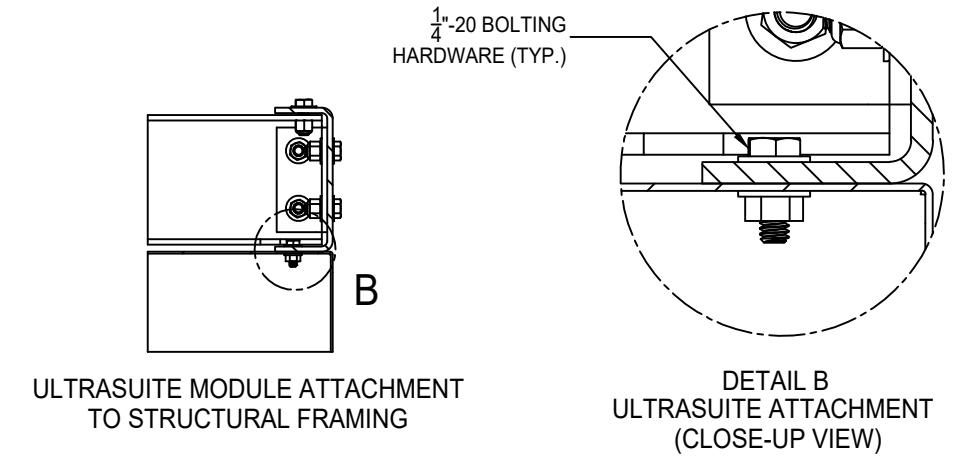
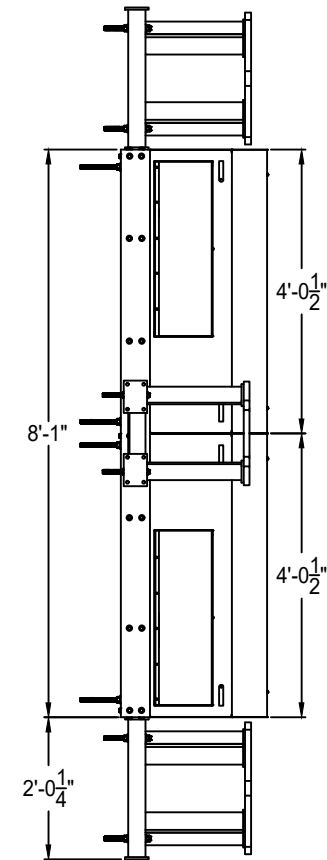
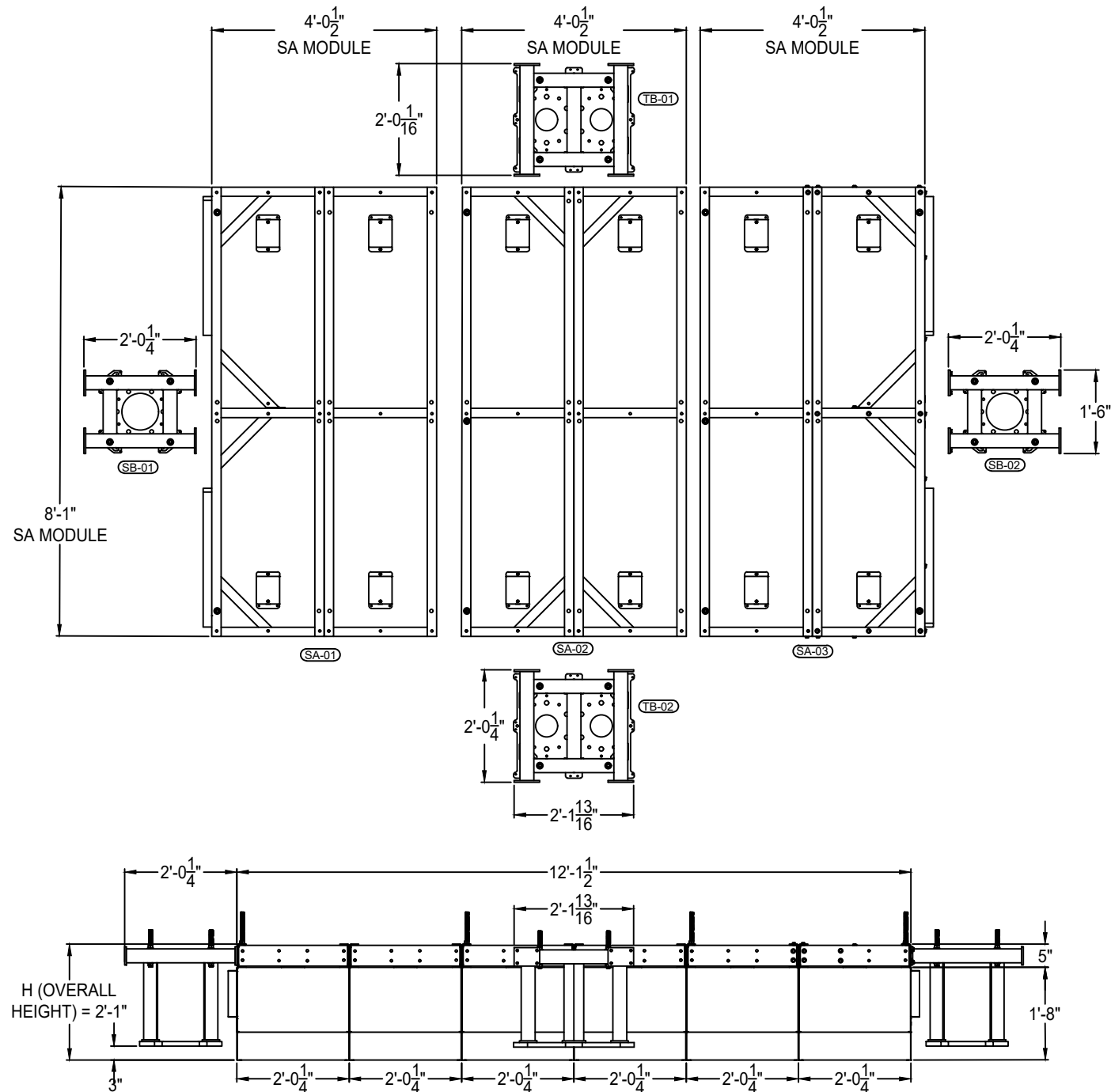
Project: _____

276328	Revision: 2A	05-17-2024
--------	--------------	------------

ULTRASUITE® + STRUCTURE

OPERATING ROOM DIFFUSER SYSTEM WITH INTEGRATED LED LIGHTING AND ALUMINUM STRUCTURAL SUPPORT

STRUCTURAL DETAILS - PAGE 4 OF 6 - MODULE BREAKDOWN VIEW - TRADITIONAL OR



PRICE | **CRITICAL ENVIRONMENTS**

Project:

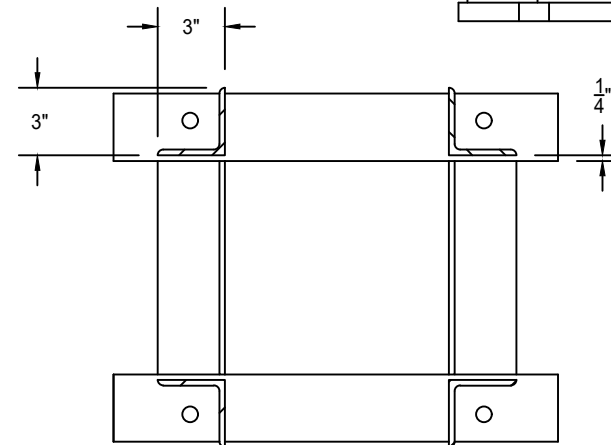
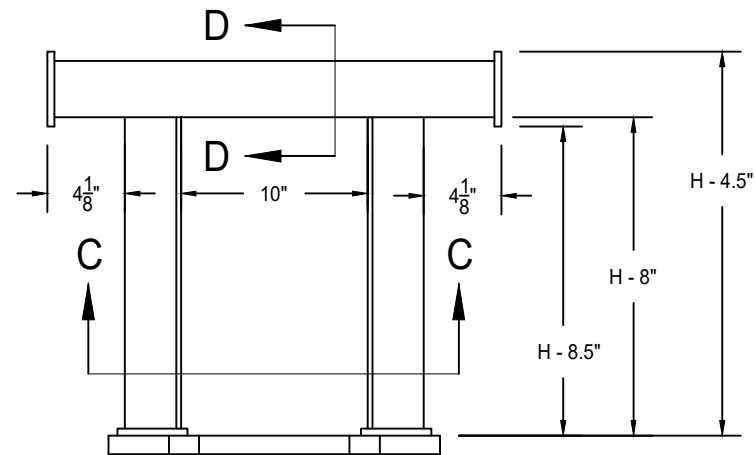
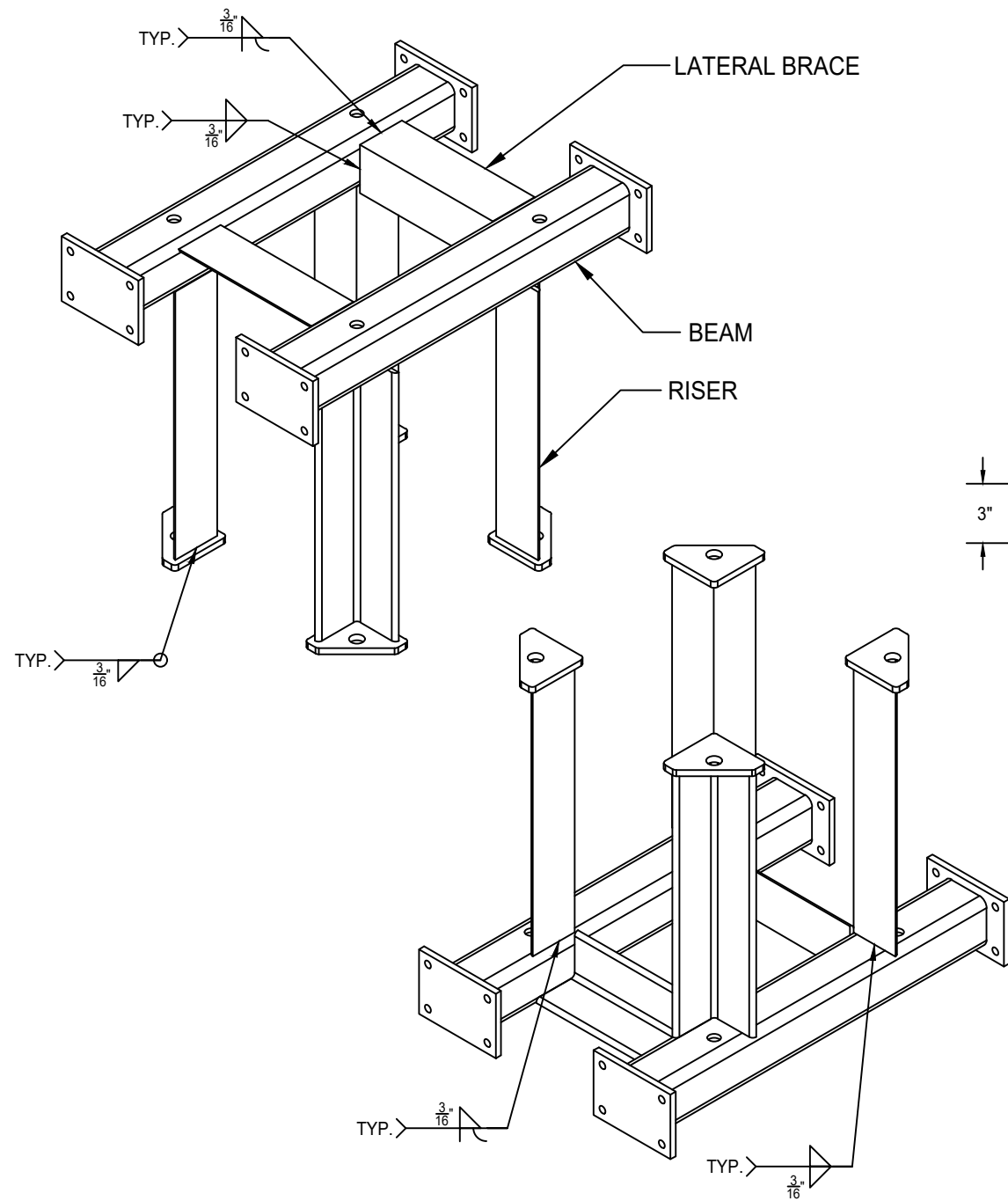
276328

Revision: 2A

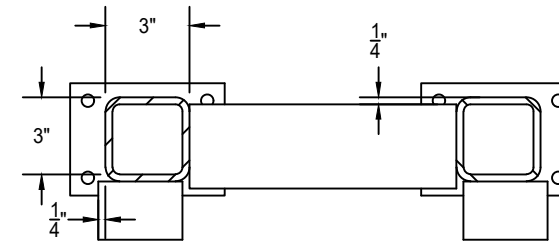
05-17-2024

ULTRASUITE® + STRUCTURE

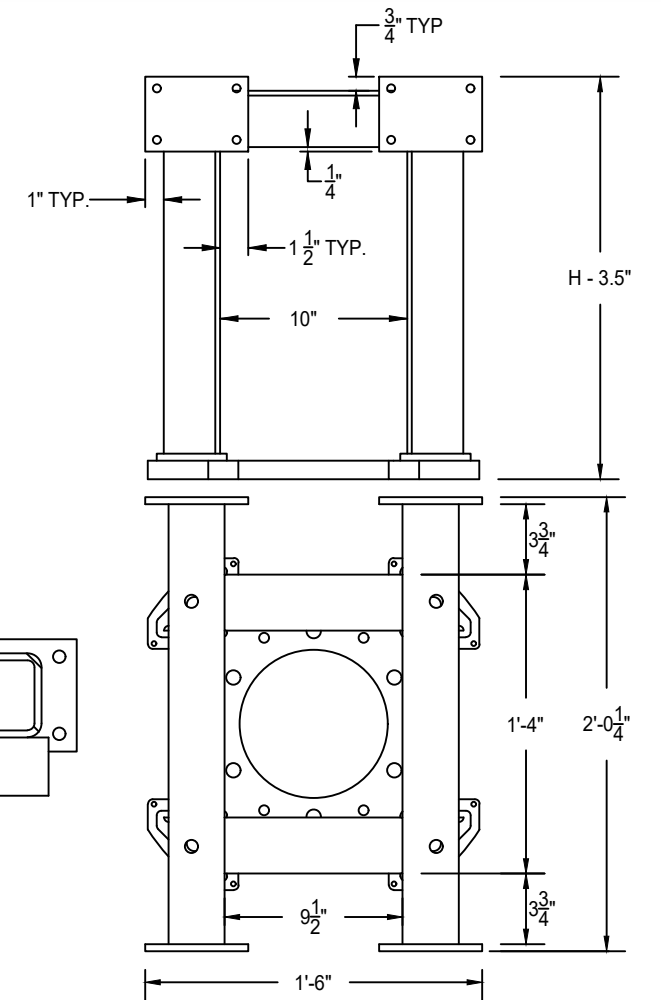
OPERATING ROOM DIFFUSER SYSTEM WITH INTEGRATED LED LIGHTING AND ALUMINUM STRUCTURAL SUPPORT STRUCTURAL DETAILS - PAGE 5 OF 6 - SINGLE BOOM MOUNT DETAILS



SECTION C-C



SECTION D-D



MEMBER NAME	SHAPE	PROFILE	MATERIAL
BEAM	HSS3" X 3" X 1/4"		ASTM A500 GR. B OR C
LATERAL BRACE AND RISER	L3" X 3" X 1/4"		A36 OR EQUIVALENT

OVERALL HEIGHT = H

PRICE | **CRITICAL ENVIRONMENTS**

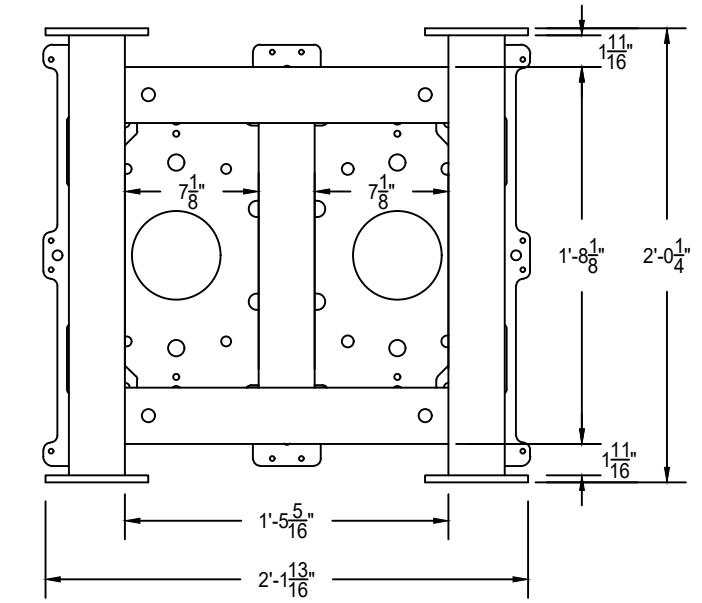
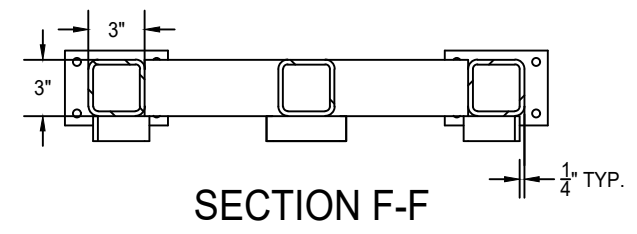
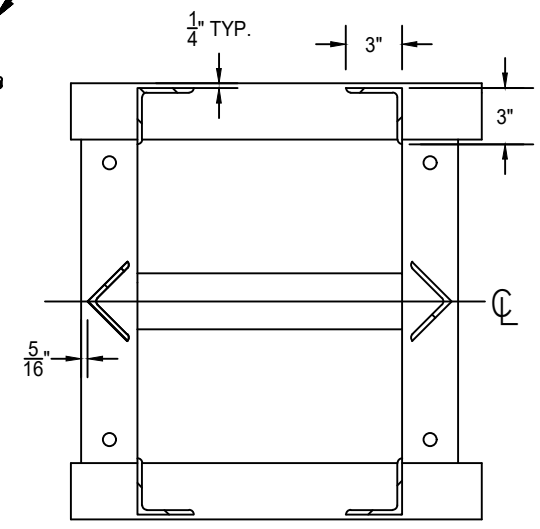
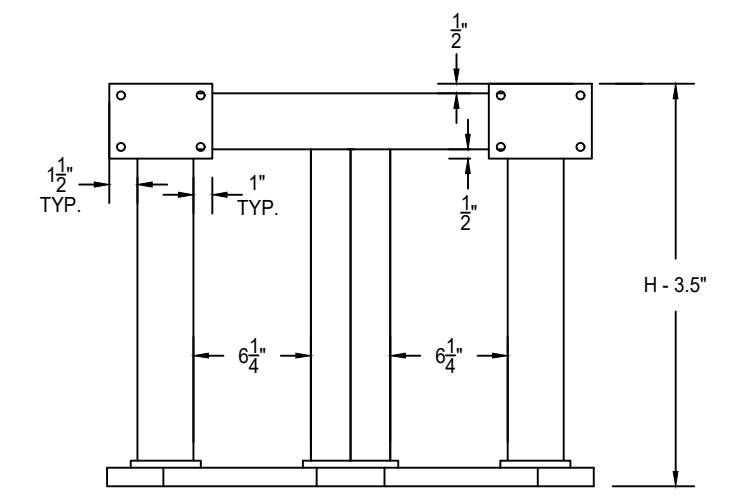
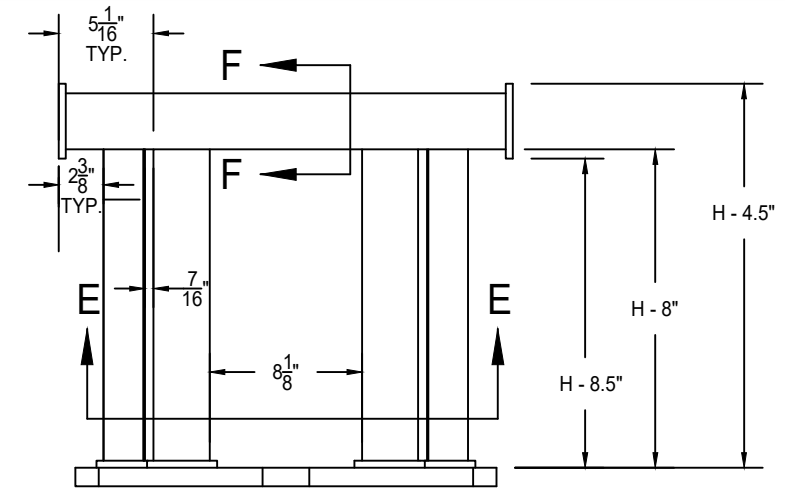
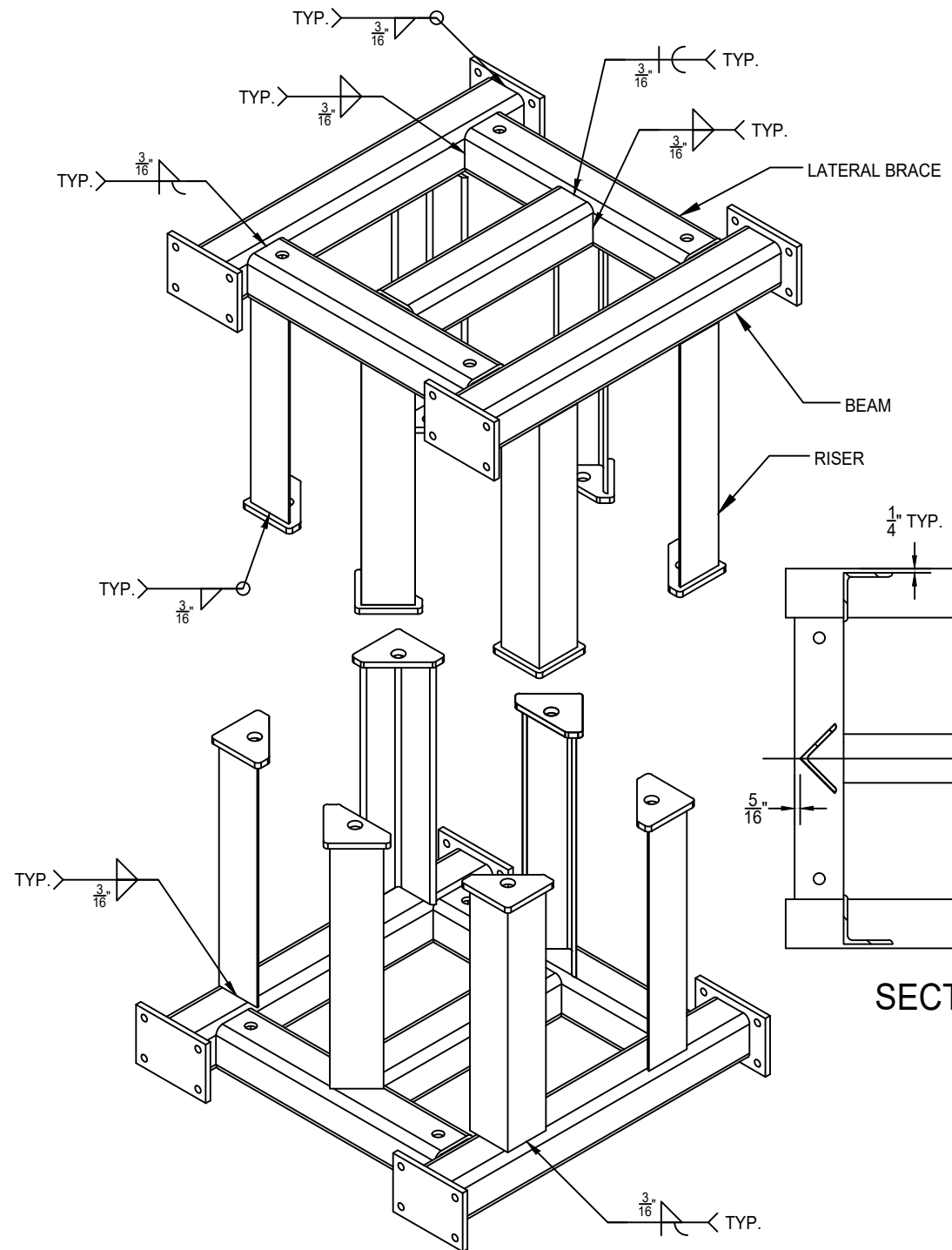
Project: _____

276328	Revision: 2A	05-17-2024
--------	--------------	------------

ULTRASUITE® + STRUCTURE

OPERATING ROOM DIFFUSER SYSTEM WITH INTEGRATED LED LIGHTING AND ALUMINUM STRUCTURAL SUPPORT

STRUCTURAL DETAILS - PAGE 6 OF 6 - TANDEM BOOM MOUNT DETAILS



SECTION E-E

SECTION F-F

MEMBER NAME	SHAPE	PROFILE	MATERIAL
BEAM AND LATERAL BRACE	HSS3" X 3" X 1/4"		ASTM A500 GR. B OR C
RISER	L3" X 3" X 1/4"		A36 OR EQUIVALENT

OVERALL HEIGHT = H

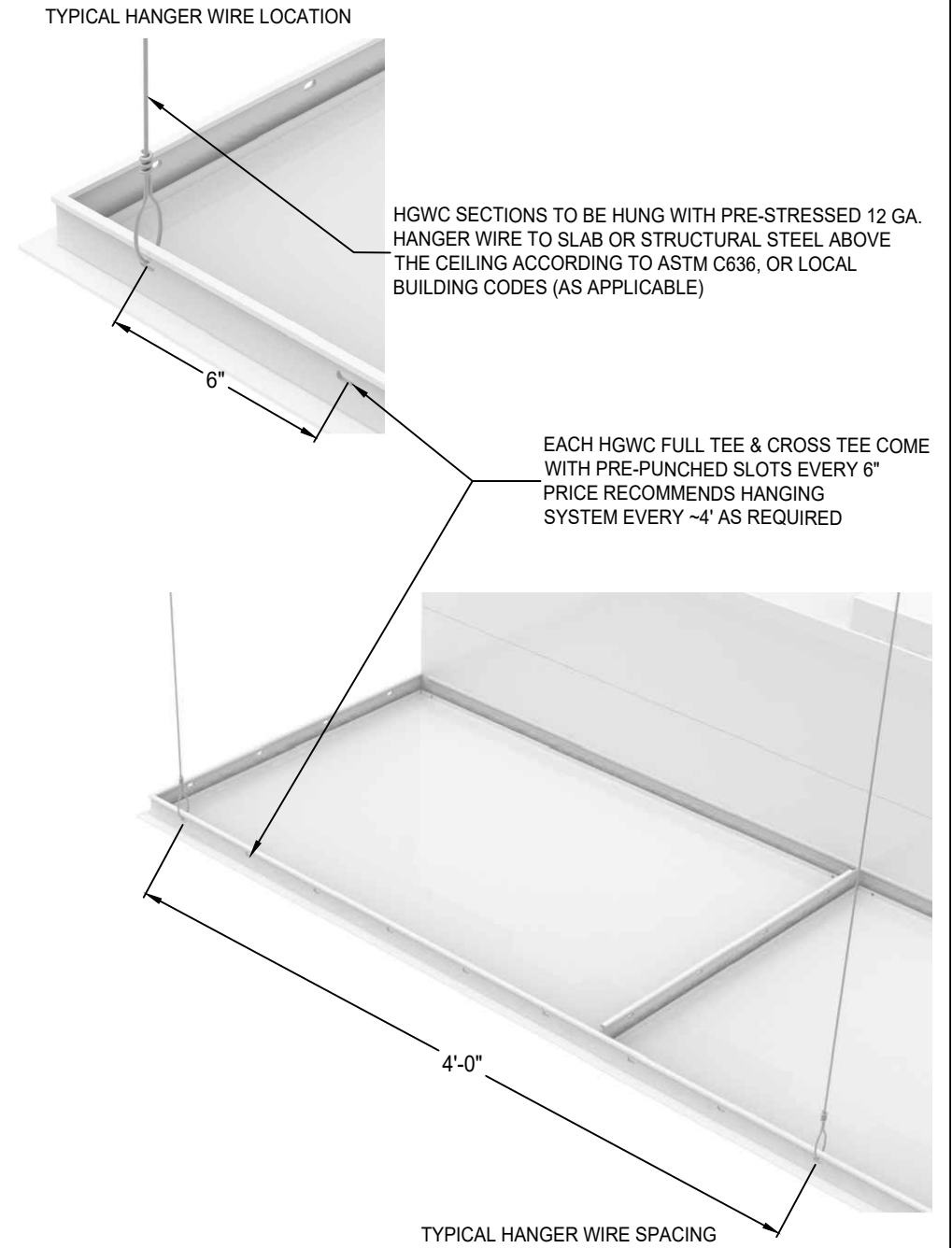
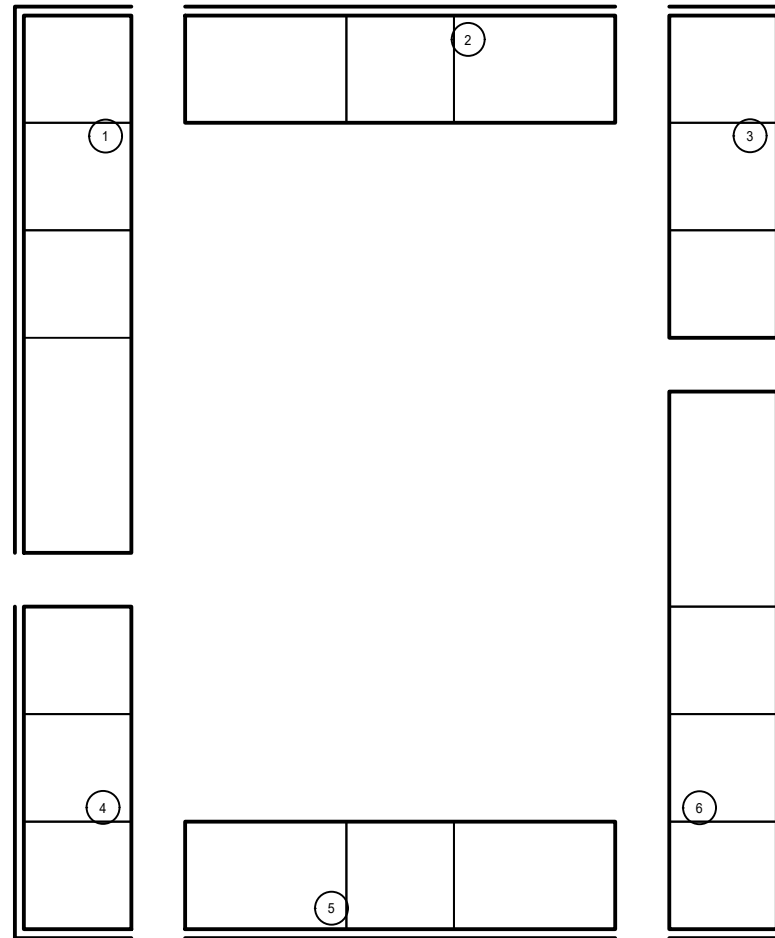
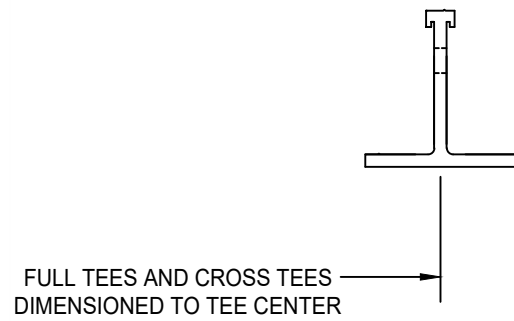
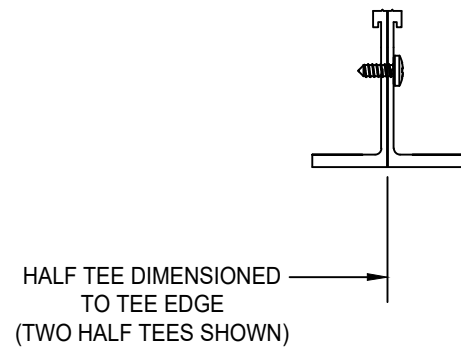
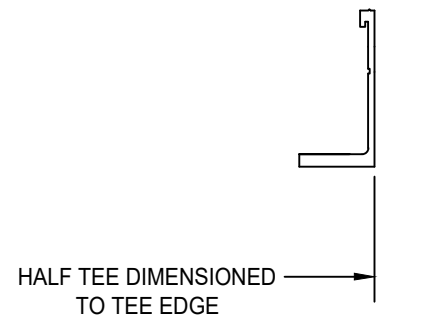
PRICE | **CRITICAL ENVIRONMENTS**

Project: _____

276328	Revision: 2A	05-17-2024
--------	--------------	------------

ULTRASUITE® + STRUCTURE

OPERATING ROOM DIFFUSER SYSTEM WITH INTEGRATED LED LIGHTING AND ALUMINUM STRUCTURAL SUPPORT HGWC SHIP SECTION BREAKDOWN & HANGING DETAILS - TRADITIONAL OR



- THE HGWC GRID IS SUPPLIED IN MULTIPLE FACTORY ASSEMBLED SECTIONS NO LARGER THAN 10'x4'
- THE CEILING IS FACTORY PRE-MANUFACTURED TO SIZES AND TOLERANCE $\pm \frac{1}{16}$ "

PRICE | **CRITICAL ENVIRONMENTS**

Project:

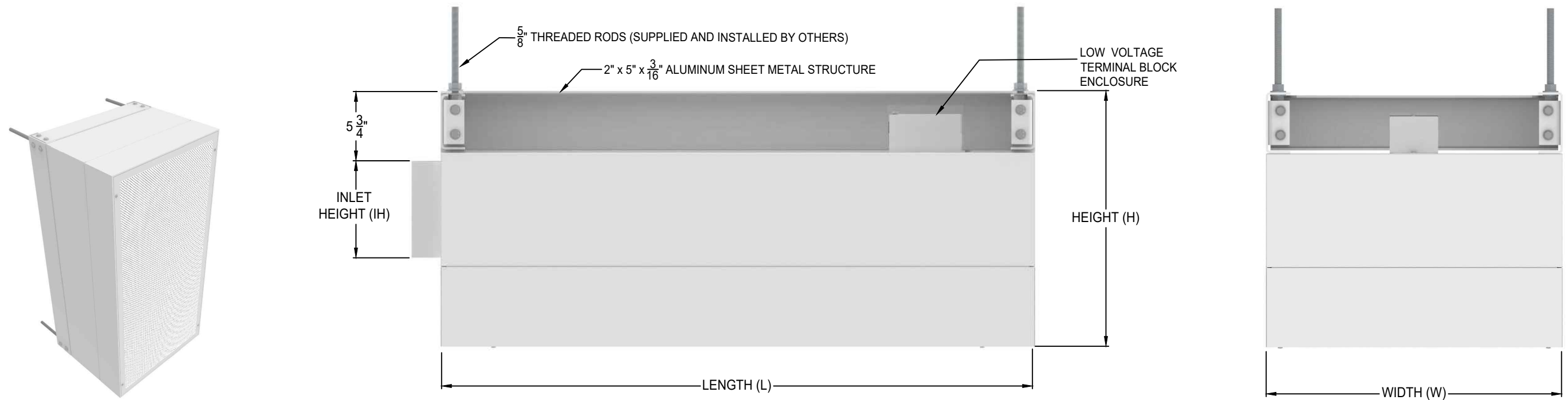
276328

Revision: 2A

05-17-2024

ULTRASUITE® + STRUCTURE

OPERATING ROOM DIFFUSER SYSTEM WITH INTEGRATED LED LIGHTING AND ALUMINUM STRUCTURAL SUPPORT



STANDARD CONSTRUCTION

- 14 GA (.064" THICK) ALUMINUM PLENUM
- EXTRUDED ALUMINUM OUTER FRAME AND DIFFUSER FACE FRAME
- 5 GA (.188" THICK) SHEET METAL ALUMINUM STRUCTURE
- ROOM-SIDE ADJUSTABLE APERTURE PLATE DAMPER
- TWO STAINLESS STEEL RETAINER CABLES PER DIFFUSER FACE
- DIFFUSER FACE SECURED WITH 1/4 TURN FASTENERS

LED LIGHTING SPECIFICATIONS

- LED LIGHTING INTEGRATED INTO EACH DIFFUSER MODULE
- IP67 RATED LED STRIP WITH QUICK CONNECTORS
- COLOR RENDERING INDEX (CRI) 95
- L80>60,000 HRS
- FOR IES PHOTOMETRIC FILES VISIT:
www.priceindustries.com/criticalenvironments/products/ultrasuite

FINISH

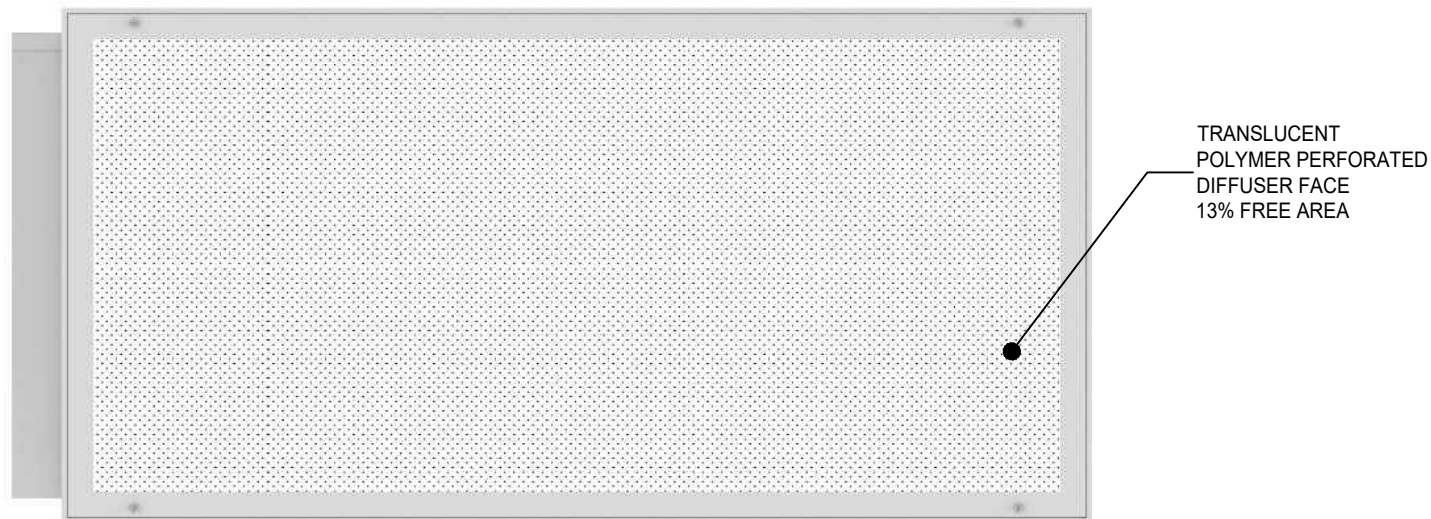
- B12 WHITE
- OPTIONAL AMB12 ANTI-MICROBIAL WHITE

LED COLOR TEMPERATURE

- 5000K (W935)
- OPTIONAL 4000K (W930)

LISTINGS

- **UL 1598/CSA C22.2 #250.0** - AIR-HANDLING LUMINAIRES
- **UL 2043** - FIRE TEST FOR HEAT AND VISIBLE SMOKE RELEASE FOR DISCRETE PRODUCTS AND THEIR ACCESSORIES INSTALLED IN AIR-HANDLING SPACES
- **UL 2108/CSA 22.2#250.0** - LOW VOLTAGE LIGHTING SYSTEM
- **UL 8750/CSA-C22.2 #250.13** - LIGHT EMITTING DIODE (LED) EQUIPMENT FOR USE IN LIGHTING PRODUCTS
- **UL 1310/CSA C22.2 #223-M91** - CLASS 2 POWER UNITS
- **UL 94** - FLAMMABILITY OF PLASTIC MATERIALS FOR PARTS IN DEVICES AND APPLIANCES
- **IP 67** - RATED INGRESS PROTECTION AGAINST DUST AND LIQUIDS
- **MIL-STD-461** - ELECTROMAGNETIC COMPATIBILITY



STANDARD MODULE SIZING CHART					
NOMINAL (W)	NOMINAL (L)	ACTUAL (W)	ACTUAL (L)	HEIGHT (H)	
				MIN	MAX
24.000	24.000	24.250	24.250	15	25
24.000	36.000	24.250	36.375	15	25
24.000	48.000	24.250	48.500	15	25

- STANDARD HEIGHT (H) = 20"
- MINIMUM HEIGHT WITH HEPA FILTER = 17"
- MINIMUM WIDTH WITH HEPA FILTER = 13"
- MAX INLET HEIGHT (IH) = HEIGHT (H) - 12"
- MAX INLET HEIGHT (IH) WITH HEPA = HEIGHT (H) - 13"

PRICE CEILING SYSTEM WEIGHTS		
PRICE SUPPLIED COMPONENTS	TOTAL SQUARE FEET =308 SQ.FT.	1713 lbs.
STRUCTURE	116 SQ.FT.	921 lbs.
USA	96 SQ.FT.	672 lbs.
HGWC+PANELS	96 SQ.FT.	120 lbs.

price | **CRITICAL ENVIRONMENTS**

Project:

276328

Revision: 2A

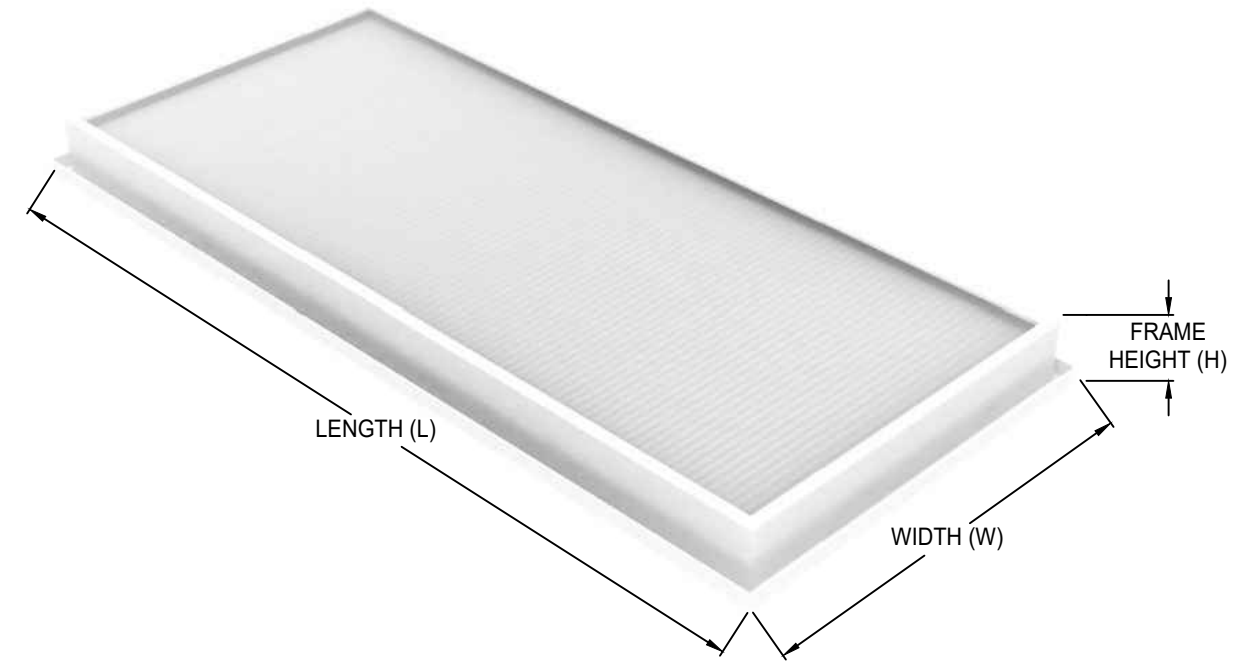
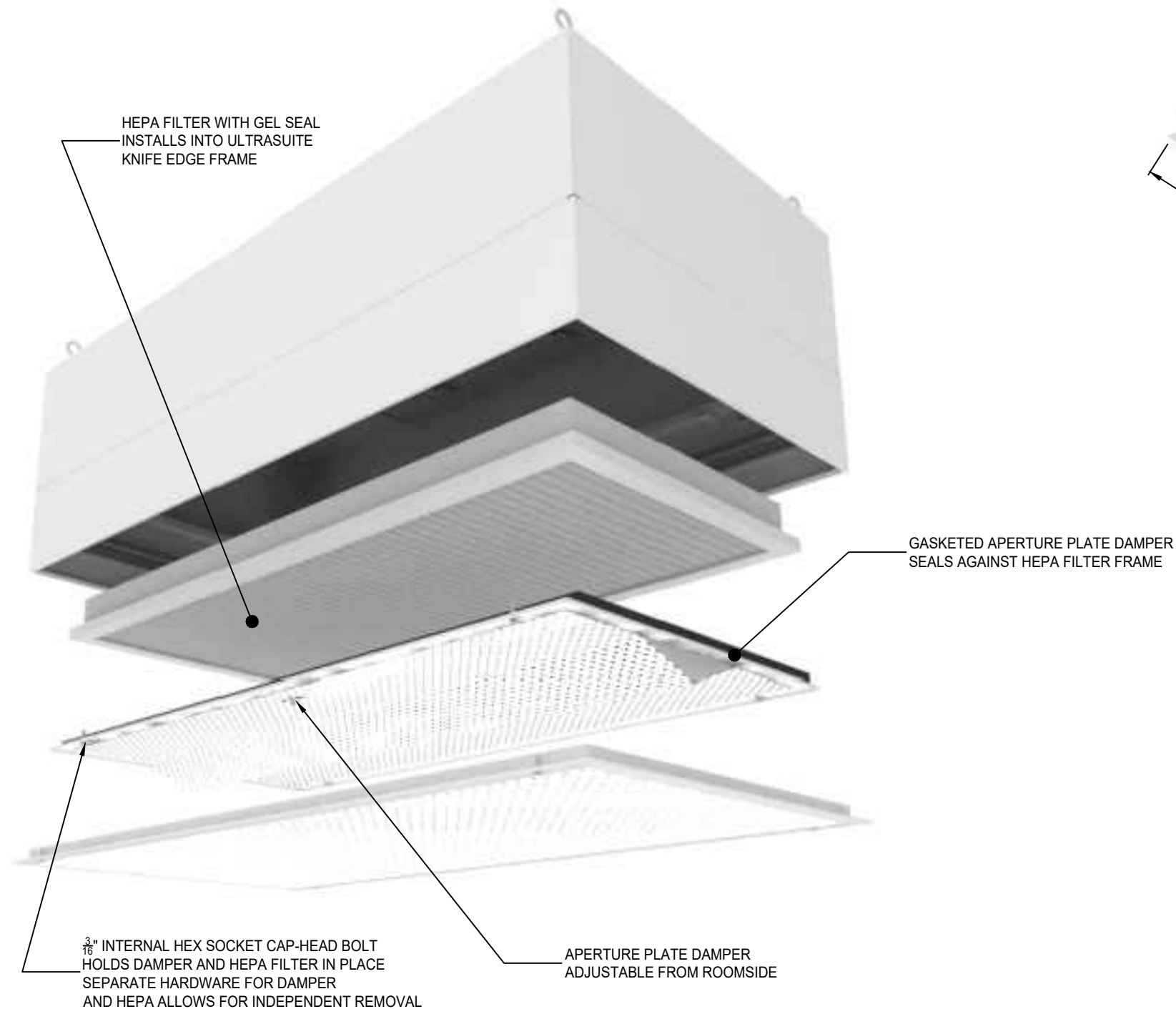
05-17-2024

ULTRASUITE® + STRUCTURE

OPERATING ROOM DIFFUSER SYSTEM WITH INTEGRATED LED LIGHTING AND ALUMINUM STRUCTURAL SUPPORT

FAAPD FACE ADJUSTABLE APERTURE PLATE DAMPER DETAILS

- OPTIONAL ROOMSIDE HEPA FILTRATION



FILTER SIZING					
NOMINAL UNIT WIDTH	NOMINAL UNIT LENGTH	ACTUAL UNIT WIDTH	ACTUAL UNIT LENGTH	ACTUAL FILTER (W)	ACTUAL FILTER (L)
24.000	24.000	24.250	24.250	19.88	19.88
24.000	36.000	24.250	36.375	19.88	32.01
24.000	48.000	24.250	48.500	19.88	44.13

NOTES:

- FILTER PLEATS RUN PARALLEL TO THE WIDTH (W) DIMENSION
- DIMENSIONS W & L TOLERANCES +/- 1/16"
- FILTERS COME WITH GEL SEAL FILLED CHANNEL
- FILTERS MUST BE ORDERED SEPARATELY UNDER THE FTR-1-X LINESTRING

FRAME DETAILS:

- MATERIAL: ANODIZED EXTRUDED ALUMINUM
- THICKNESS: 1/16" (MINIMUM)
- FILTERS ARE UL 900 CLASS 1 CERTIFIED
- EFFICIENCY AND LEAK SCAN TESTED
- HEPA EFFICIENCY: 99.99% (.3 MICRON)
- MINIMUM MODULE WIDTH FOR ROOMSIDE HEPA FILTRATION IS 12"

price | **CRITICAL ENVIRONMENTS**

Project:

276328

Revision: 2A

05-17-2024

VISIT PRICE INDUSTRIES WEBSITE FOR FILTER QUICK START GUIDE

<https://www.priceindustries.com/content/uploads/assets/literature/manuals/section%20e/ft-room-side-replaceable-filter-rsr-quick-start-guide.pdf>

NOTE:

UL 1598 DOES NOT HAVE PROVISIONS FOR HEPA FILTERS MOUNTED WITHIN FIXTURE. USA COMPLIES WITH UL 1598 WITH HEPA FILTERS ORDERED SEPERATELY ON FTR-1-X LINESTRING.

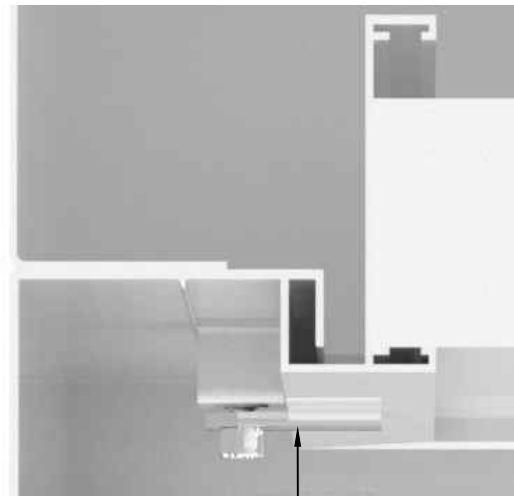
ULTRASUITE® + STRUCTURE

OPERATING ROOM DIFFUSER SYSTEM WITH INTEGRATED LED LIGHTING AND ALUMINUM STRUCTURAL SUPPORT

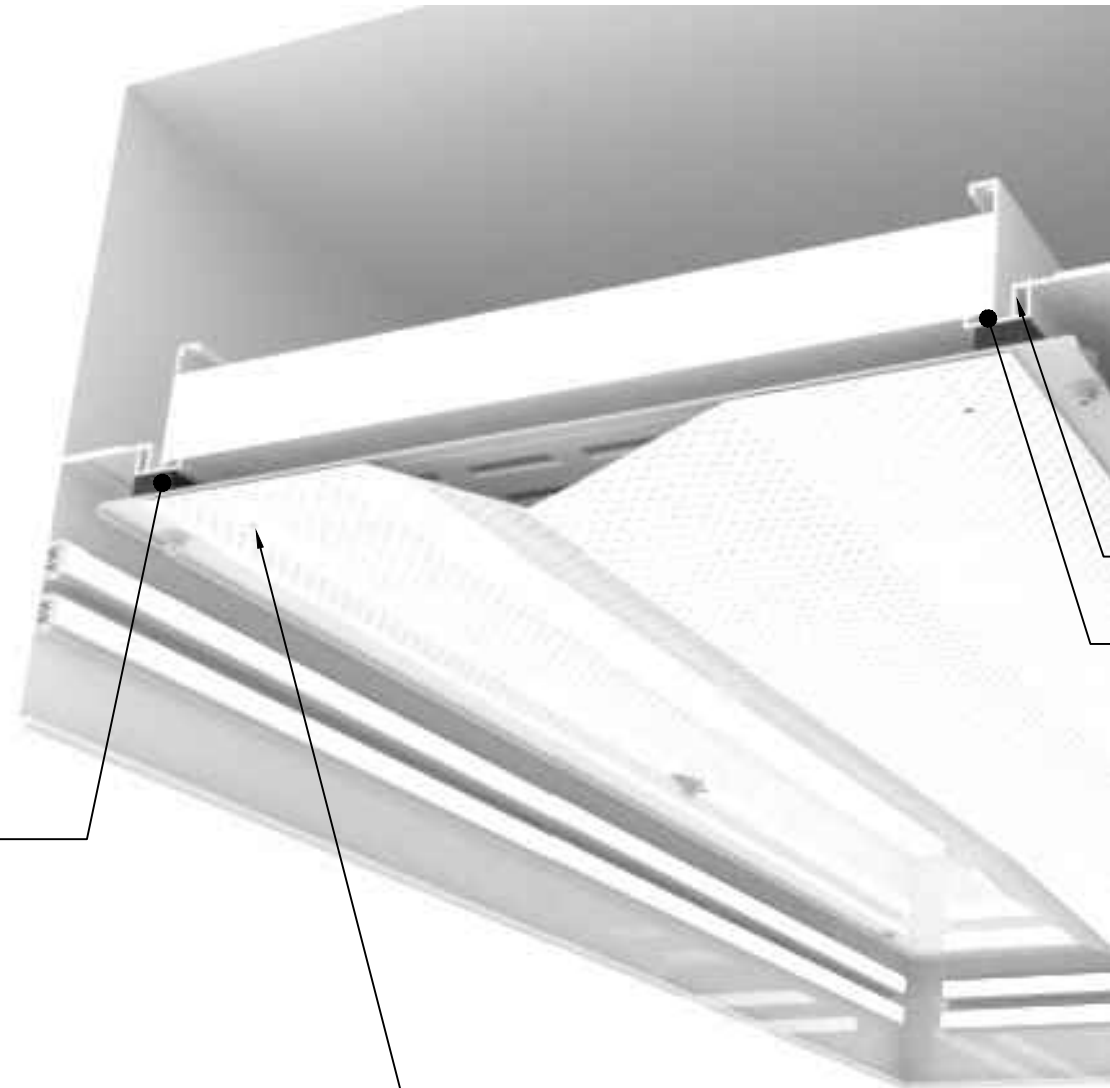
FAAPD FACE ADJUSTABLE APERTURE PLATE DAMPER DETAILS

- OPTIONAL ROOMSIDE HEPA FILTRATION

FILTER HOLD DOWN TAB DETAIL



OPTIONAL
FILTER HOLD
DOWN TAB

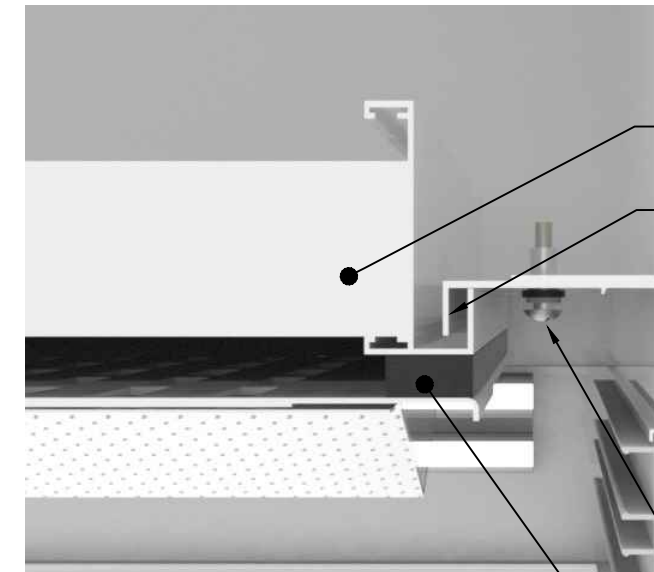


APERTURE PLATE
DAMPER WITH UL2043
RATED GASKET
SEALS AGAINST
THE KNIFE EDGE

DAMPER SECURED
IN PLACE WITH SCREWS
INSTALL BY USING $\frac{3}{16}$ " ALLEN KEY

KNIFE EDGE
HEPA FILTER
GEL SEAL

STATIC PRESSURE PORT DETAIL



OPTIONAL
HEPA FILTER

KNIFE EDGE

STATIC
PRESSURE
PORT

APERTURE PLATE
DAMPER WITH UL2043
RATED GASKET
SEALS AGAINST
THE HEPA FRAME

price | **CRITICAL ENVIRONMENTS**

Project:

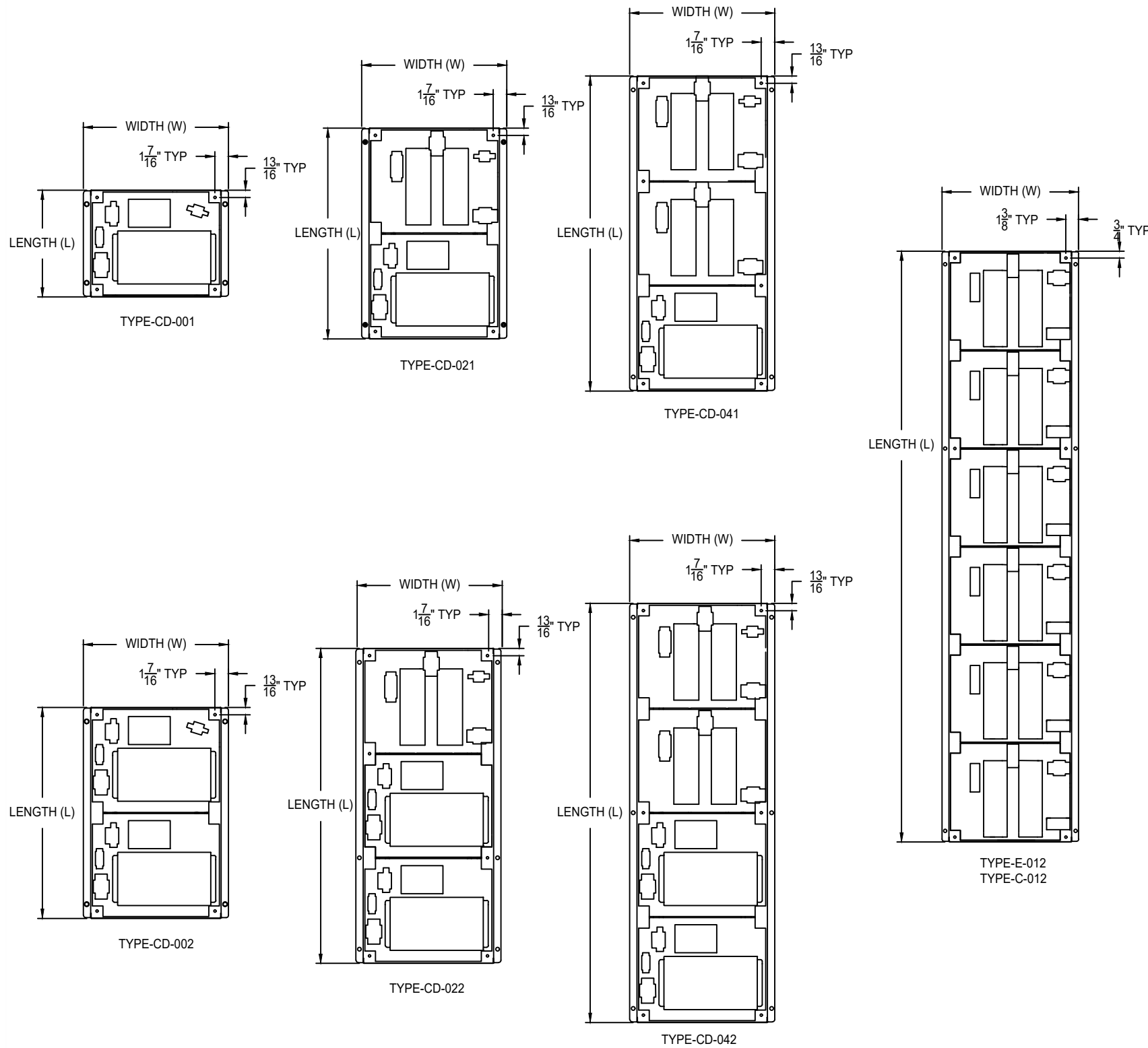
276328

Revision: 2A

05-17-2024

ULTRASUITE® + STRUCTURE

OPERATING ROOM DIFFUSER SYSTEM WITH INTEGRATED LED LIGHTING AND ALUMINUM STRUCTURAL SUPPORT URDC ULTRA REMOTE DRIVER CABINETS - STANDARD OFFERINGS



- ALL DRIVER CABINETS ARE ORDERED ON URDC-1-X LINESTRING.
- REMOTE DRIVER CABINETS REQUIRE SINGLE POINT HIGH VOLTAGE (120-277v~) CONNECTION (277V~ RECOMMENDED).
- ALL DIMMING SWITCHES ARE ORDERED ON UCA-1-X LINESTRING.
- 0-10V DIMMING SWITCH SHIPPED LOOSE. THE TOTAL LENGTH FOR 0-10V CONTROL SIGNAL WIRING FOR THIS CONTROL SHOULD NOT EXCEED 500'. DO NOT USE WIRE SMALLER THAN 20 AWG.
- 8A AND 16A 0-10V DIMMING SWITCHES AVAILABLE. DIMMING ZONES AND CONTROL ARE COMPLETELY CUSTOMIZABLE.
- 0-10V DIMMING SIGNAL FROM SWITCH CAN CONTROL UP TO 100 DRIVERS.
- LED DRIVER TYPE E OFFERS CONTINUOUS, FLICKER-FREE DIMMING FROM 100% TO 1% WITH 0-10 VOLTAGE DIMMER SHIPPED LOOSE OR DIMMING SIGNAL PROVIDED BY OTHERS.
- LED DRIVER TYPE C AND CD OFFERS CONTINUOUS, FLICKER-FREE DIMMING FROM 100% TO 10% WITH 0-10 VOLTAGE DIMMER SHIPPED LOOSE. OPTIONAL SOLID STATE RELAY WITH 4-32VDC RELAY SHUT OFF SIGNAL AND 0-10VDC DIMMING SIGNAL PROVIDED BY OTHERS
- 30A DISCONNECT SWITCH AVAILABLE TO PROVIDE FULL SYSTEM SHUTOFF WHEN UTILIZING 0-10V SIGNAL
- LED DRIVERS SHIP FACTORY WIRED AND INSTALLED IN REMOTE DRIVER CABINETS.
- URDC DRIVER CABINETS CAN BE WALL MOUNTED, TYPICALLY IN AN ADJACENT EQUIPMENT ROOM, OR INSTALLED ABOVE THE CEILING. DRIVER CABINETS CANNOT BE RECESSED BETWEEN WALL STUDS AS THEY REQUIRE VENTILATION.
- ULTRASUITE MODULES COME WITH FACTORY WIRED AND INSTALLED TOP MOUNTED LOW VOLTAGE TERMINAL BLOCK ENCLOSURE
- INCOMING HIGH VOLTAGE POWER AND LOW VOLTAGE CONNECTION BETWEEN ULTRASUITE MODULES AND REMOTE DRIVER CABINET ARE THE RESPONSIBILITY OF THE INSTALLER.
- MAX DISTANCE BETWEEN ULTRASUITE MODULE AND REMOTE DRIVER CABINET IS DEPENDANT ON WIRE GAUGE TO MINIMIZE VOLTAGE DROP. SEE TABLE BELOW.
- SEE ULTRASUITE INSTALLATION MANUAL AVAILABLE AT <https://www.priceindustries.com/criticalenvironments/products/ultrasuite> FOR RECOMMENDED REMOTE DRIVER CABINET AND ULTRASUITE SYSTEM INSTALLATION.

DRIVER CABINET	# OF MODULES	# OF DRIVERS	L	W	H	WEIGHT	AC CURRENT - TYPE E (120VAC / 277VAC)	AC CURRENT - TYPE C (120VAC / 277VAC)
TYPE E/C-001	1	1	0'-11 1/2"	1' - 3 1/2"	5"	7 lbs.	0.95A / 0.4A	1.2A / 0.50A
TYPE E/C-002		2	0'-11 1/2"	1' - 3 1/2"	5"	15 lbs.	1.9A / 0.8A	2.4A / 1.7A
TYPE E/C-003	2	3	1' - 10 9/16"	1' - 3 1/2"	5"	22 lbs.	2.95A / 1.2A	3.6A / 2.9A
TYPE E/C-004		4	1' - 10 9/16"	1' - 3 1/2"	5"	30 lbs.	3.8A / 1.6A	4.8A / 4.1A
TYPE E/C-005	3	5	2' - 9 11/16"	1' - 3 1/2"	5"	37 lbs.	4.75A / 2A	6.0A / 5.3A
TYPE E/C-006		6	2' - 9 11/16"	1' - 3 1/2"	5"	45 lbs.	5.7A / 2.4A	7.2A / 6.5A
TYPE E/C-007	4	7	3' - 8 13/16"	1' - 3 1/2"	5"	52 lbs.	6.65A / 2.8A	8.4A / 7.7A
TYPE E/C-008		8	3' - 8 13/16"	1' - 3 1/2"	5"	60 lbs.	7.6A / 3.2A	9.6A / 8.9A
TYPE E/C-009	5	9	4' - 7 15/16"	1' - 3 1/2"	5"	67 lbs.	8.55A / 3.6A	10.8A / 10.1A
TYPE E/C-010		10	4' - 7 15/16"	1' - 3 1/2"	5"	75 lbs.	9.5A / 4A	12.0A / 11.3A
TYPE E/C-011	6	11	5' - 7 1/16"	1' - 3 1/2"	5"	82 lbs.	10.45A / 4.4A	13.2A / 12.5A
TYPE E/C-012		12	5' - 7 1/16"	1' - 3 1/2"	5"	90 lbs.	11.4A / 4.8A	14.4A / 13.7A

DRIVER CABINET	# OF MODULES	# OF DRIVERS	L	W	H	WEIGHT	AC CURRENT - TYPE E (120VAC / 277VAC)
TYPE-CD-001	3	1	0'-11 1/2"	1' - 3 1/2"	5"	20 lbs.	7A / 2.9A
TYPE-CD-021	4	3	1' - 10 9/16"	1' - 3 1/2"	5"	35 lbs.	9.4A / 3.9A
TYPE-CD-041	5	5	2' - 9 11/16"	1' - 3 1/2"	5"	50 lbs.	11.8A / 4.9A
TYPE-CD-002	6	2	1' - 10 9/16"	1' - 3 1/2"	5"	40 lbs.	14.0A / 5.8A
TYPE-CD-022	7	4	2' - 9 11/16"	1' - 3 1/2"	5"	55 lbs.	- / 6.8A
TYPE-CD-042	8	6	3' - 8 13/16"	1' - 3 1/2"	5"	70 lbs.	- / 7.8A

- TYPE C & CD OFFERS 100 TO 10% DIMMING
- TYPE E OFFERS 100 TO 1% DIMMING
- TYPE CD OFFERS OVER 40% SPACE SAVING FOR CABINET INSTALLATION
- TYPE C ALLOWS FOR RECESSED TYPE IC INSTALLATION
- TYPE E & CD ALLOWS FOR SURFACE, WALL OR CEILING MOUNT INSTALLATION. PASSIVE VENTILATION OF CABINET IS REQUIRED THROUGH OUTER BOX LOUVERS



Project:

276328

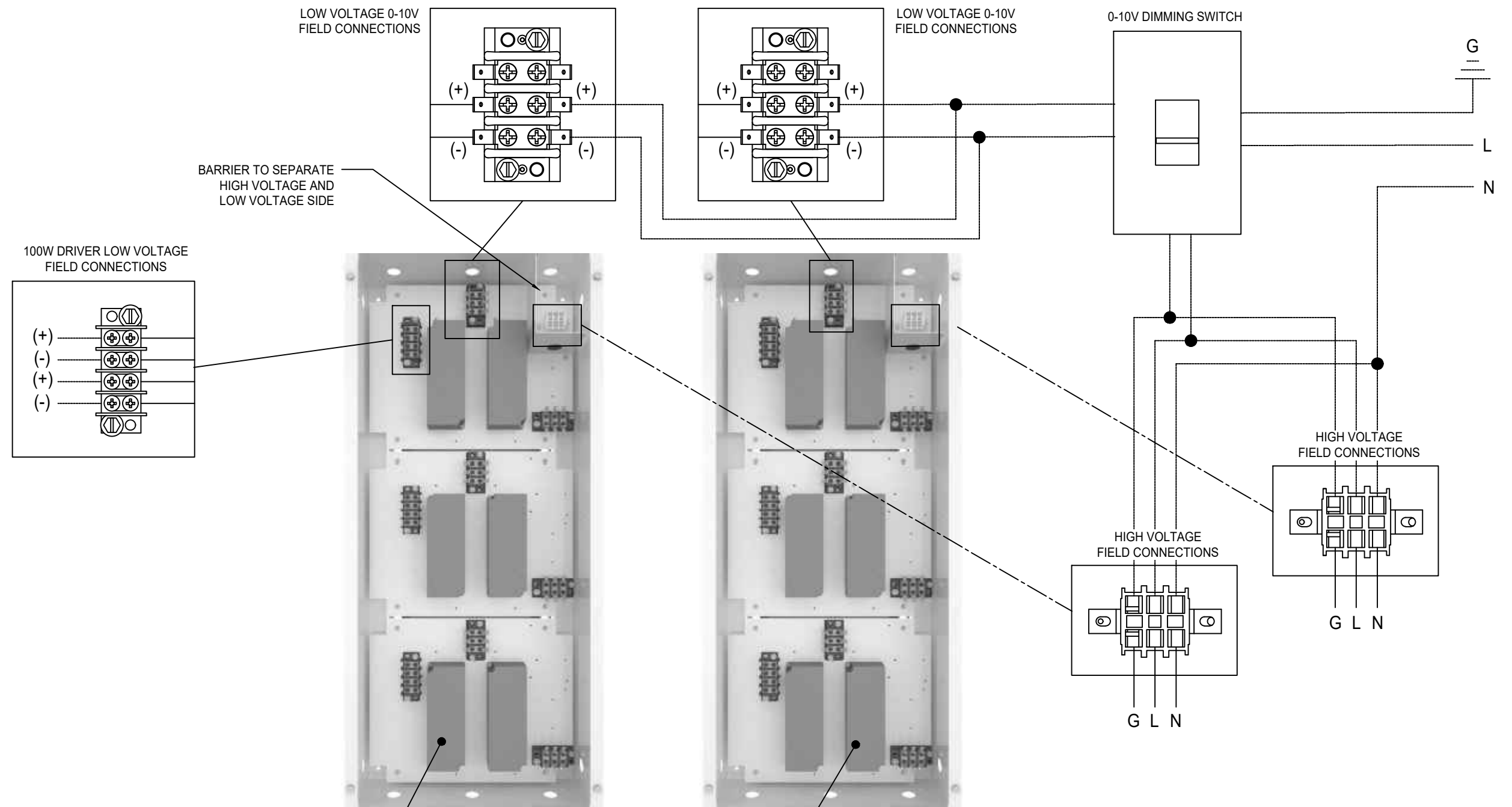
Revision: 2A

05-17-2024

ULTRASUITE® + STRUCTURE

OPERATING ROOM DIFFUSER SYSTEM WITH INTEGRATED LED LIGHTING AND ALUMINUM STRUCTURAL SUPPORT

○ URDC ULTRA REMOTE DRIVER CABINETS - WIRING FOR SINGLE DIMMING ZONE (100 TO 1% DIMMING)



ALL INTERNAL REMOTE DRIVER CABINET WIRING IS DONE IN THE FACTORY

URDC-1-X REMOTE DRIVER CABINET TYPE E SHOWN

ALL INTERNAL REMOTE DRIVER CABINET WIRING IS DONE IN THE FACTORY

— PRE-WIRED FACTORY CONNECTION
 - - - FIELD CONNECTION
 G GROUND
 N NEUTRAL
 L LINE CONNECTION

PRICE | **CRITICAL ENVIRONMENTS**

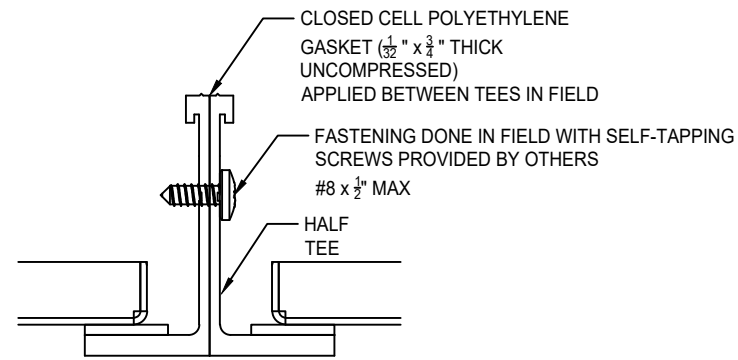
Project:		
276328	Revision: 2A	05-17-2024

• VISUAL WIRING DETAIL IS SHOWN FOR REFERENCE ONLY, REFERENCE INSTALLATION MANUAL FOR WIRING DIAGRAMS
 • INSTALLATION WORK AND ELECTRICAL WIRING MUST BE COMPLETED BY A CERTIFIED ELECTRICIAN AND/OR QUALIFIED PERSON(S) IN ACCORDANCE WITH APPLICABLE ELECTRICAL CODES AND STANDARDS

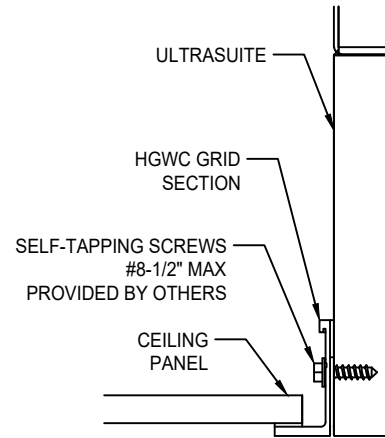
ULTRASUITE® + STRUCTURE

OPERATING ROOM DIFFUSER SYSTEM WITH INTEGRATED LED LIGHTING AND ALUMINUM STRUCTURAL SUPPORT

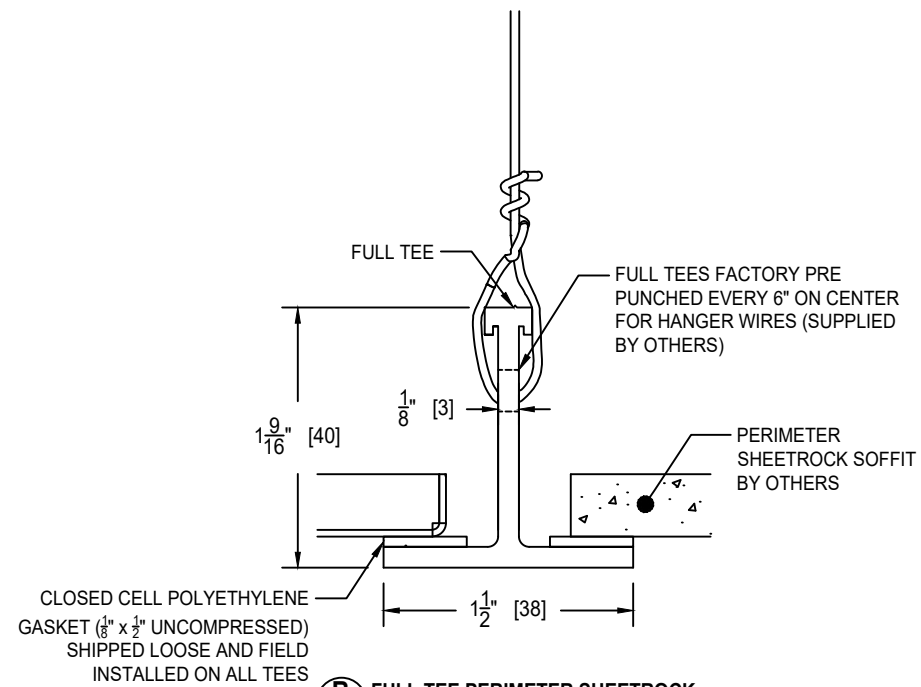
HGWC INTEGRATION DETAILS



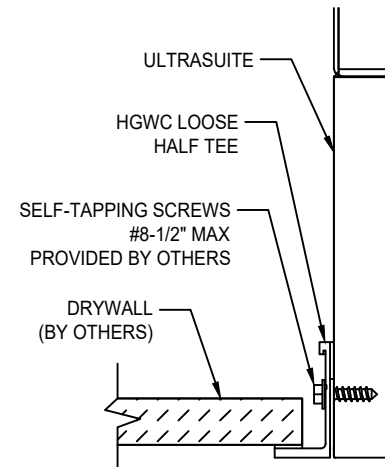
A HALF TEE FIELD JOINT



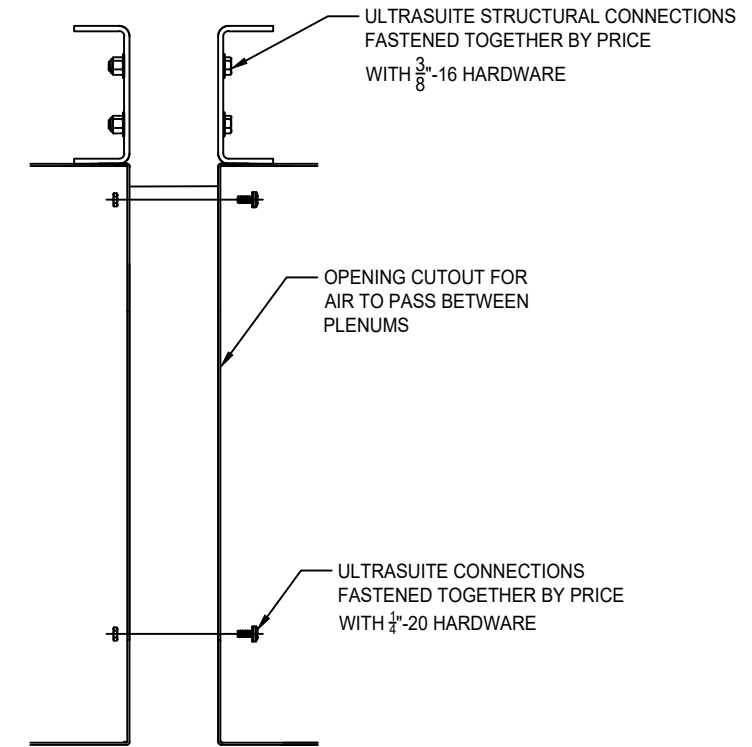
C HGWC GRID INTEGRATION



B FULL TEE PERIMETER SHEETROCK SOFFIT DETAIL



D PERIMETER HALF TEE INTEGRATION



E BOLTED JOINT ASSEMBLY

PRICE | **CRITICAL ENVIRONMENTS**

Project:

276328

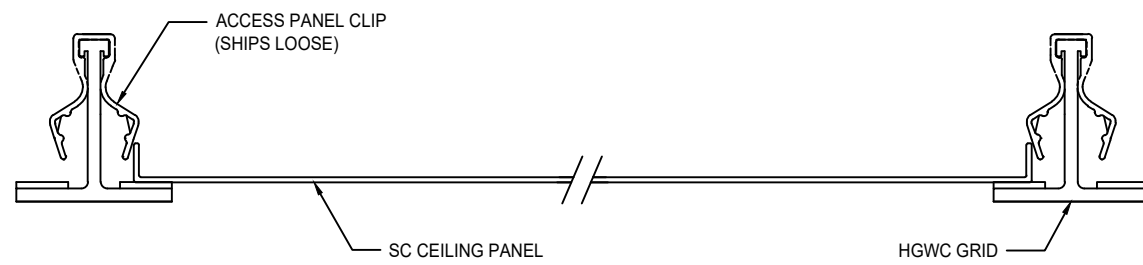
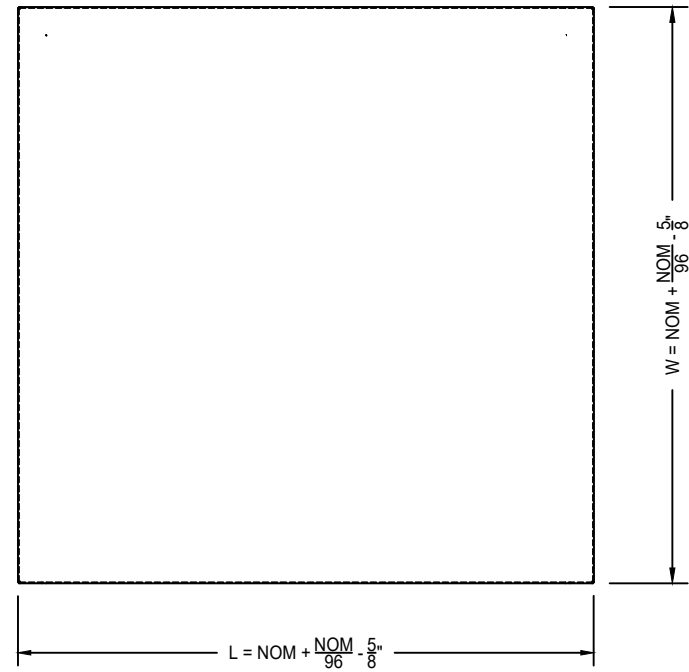
Revision: 2A

05-17-2024

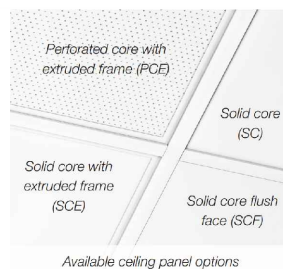
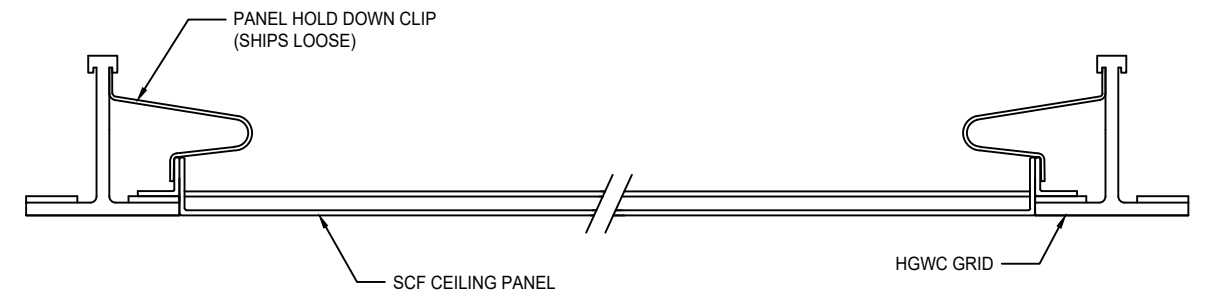
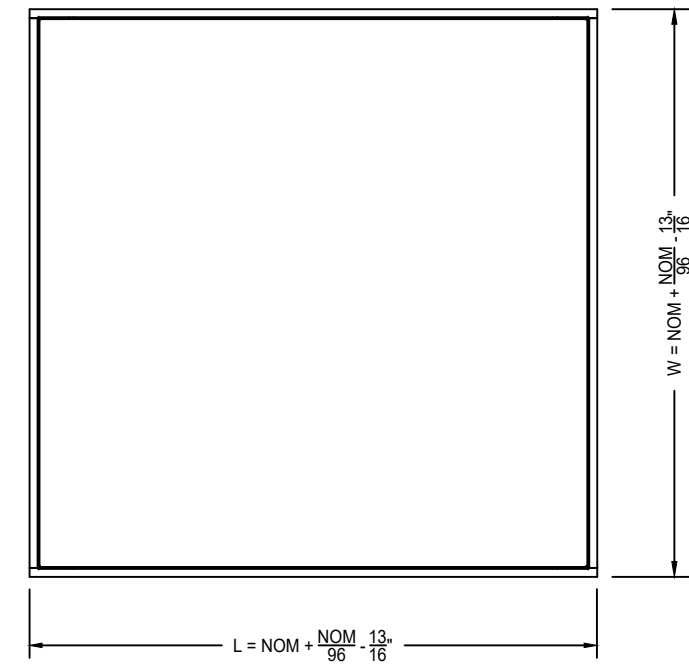
ULTRASUITE[®] + STRUCTURE

OPERATING ROOM DIFFUSER SYSTEM WITH INTEGRATED LED LIGHTING AND ALUMINUM STRUCTURAL SUPPORT

SC - SOLID CORE



SCF - SOLID CORE WITH FLUSH MOUNT FRAME



PANEL MATERIAL / FINISH:

- SC PANEL - .080" ALUMINUM / B12 STANDARD WHITE
- SCF PANEL - .040" ALUMINUM / B12 STANDARD WHITE

CEILING TYPE:

- HGWC - 1 1/2" HOSPITAL GRADE WELDED CEILING SYSTEM



Project:

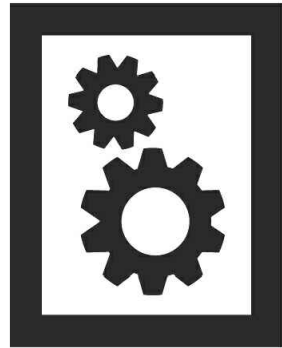
276328

Revision: 2A

05-17-2024

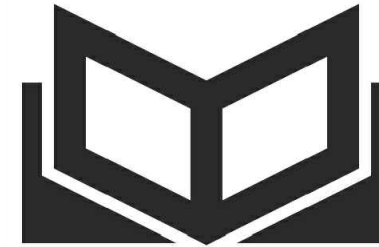
ULTRASUITE[®] + STRUCTURE

OPERATING ROOM DIFFUSER SYSTEM WITH INTEGRATED LED LIGHTING AND ALUMINUM STRUCTURAL SUPPORT SUPPORTING CONTENT



MANUALS

ULTRASUITE MANUAL
FTR ROOM-SIDE REPLACEABLE FILTER (RSR) QUICK START GUIDE
URDC ULTRA DRIVER CABINET MANUAL
UCA ULTRA COMPONENTS AND ACCESSORIES MANUAL
HGWC HOSPITAL GRADE WELDED CEILING SYSTEM MANUAL



BROCHURES

USA ULTRASUITE BROCHURE
USA ULTRASUITE OPERATING ROOM HVAC DESIGN GUIDE
USA ULTRASUITE PROJECT LIST
USA ULTRASUITE CASE STUDY LIBRARY



CATALOGUE / PERFORMANCE

USA ULTRASUITE CATALOGUE
USA ULTRASUITE PERFORMANCE
USA ULTRASUITE PERFORMANCE (METRIC)



SUBMITTALS

UCA ULTRA COMPONENTS AND ACCESSORIES SUBMITTAL
FTR REPLACEMENT FILTER SUBMITTAL
HGWC HOSPITAL GRADE WELDED CEILING SYSTEM SUBMITTAL



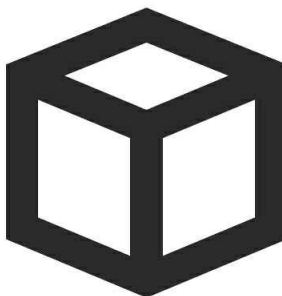
SPECIFICATIONS

USA ULTRASUITE SPECIFICATIONS



VIDEOS

USA ULTRASUITE LAUNCH VIDEO
USA ULTRASUITE INSTALLATION TIME LAPSE VIDEO
USA ULTRASUITE SMOKE TEST VIDEO
USA ULTRASUITE IN BAYLOR SCOTT & WHITE MEDICAL CENTER TESTIMONIAL
HEPA FILTER REPLACEMENT (USA AND UFFU) VIDEO
USA ULTRASUITE SEISMIC TESTING



REVIT FILES

USASA TRADITIONAL OR REVIT FILE



FOR MORE INFORMATION ON PRICE ULTRASUITE SYSTEMS, VISIT
PRICEINDUSTRIES.COM

price | **CRITICAL ENVIRONMENTS**

Project:

276328

Revision: 2A

05-17-2024