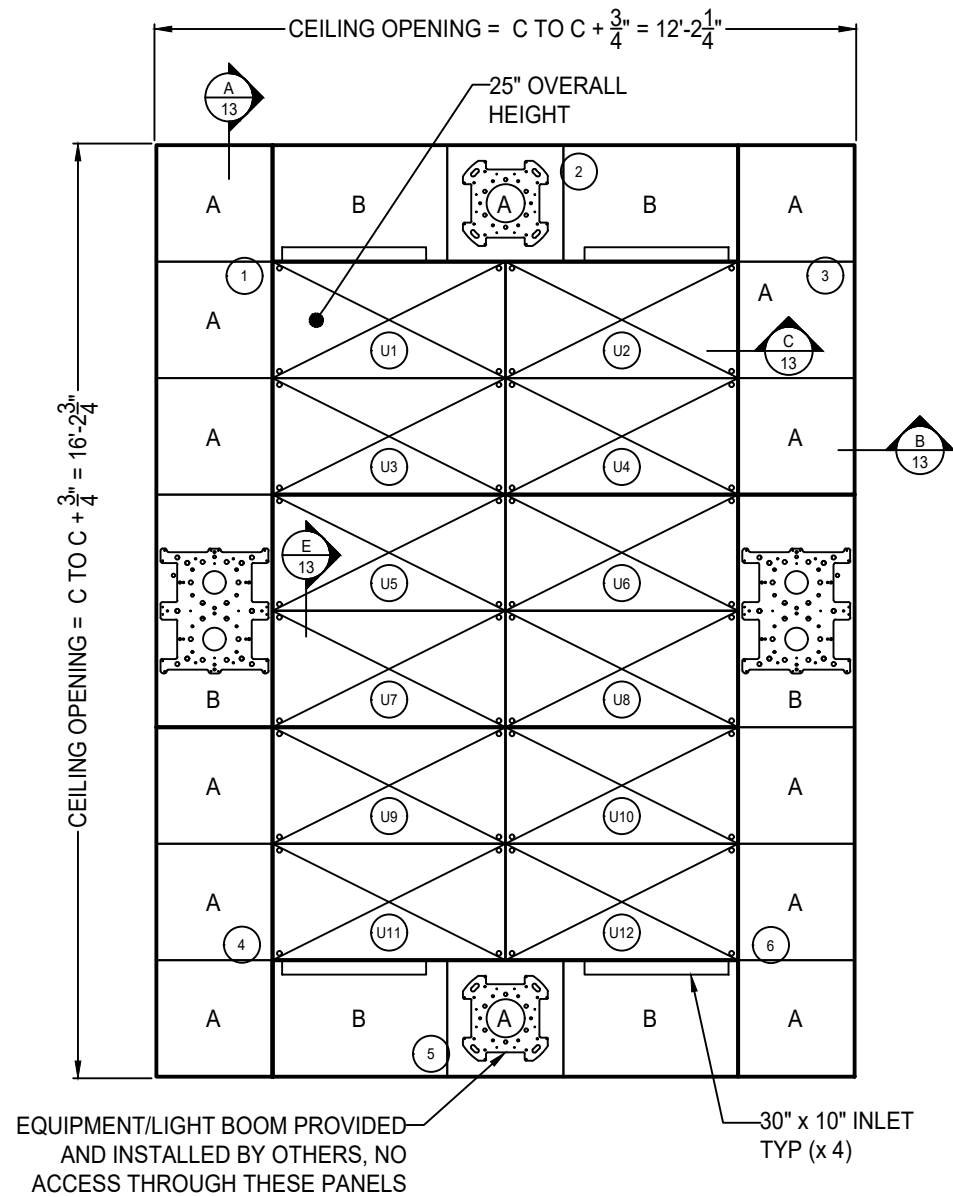


ULTRASUITE® + STRUCTURE

OPERATING ROOM DIFFUSER SYSTEM WITH INTEGRATED LED LIGHTING AND ALUMINUM STRUCTURAL SUPPORT REFLECTED CEILING PLAN - TRADITIONAL OR

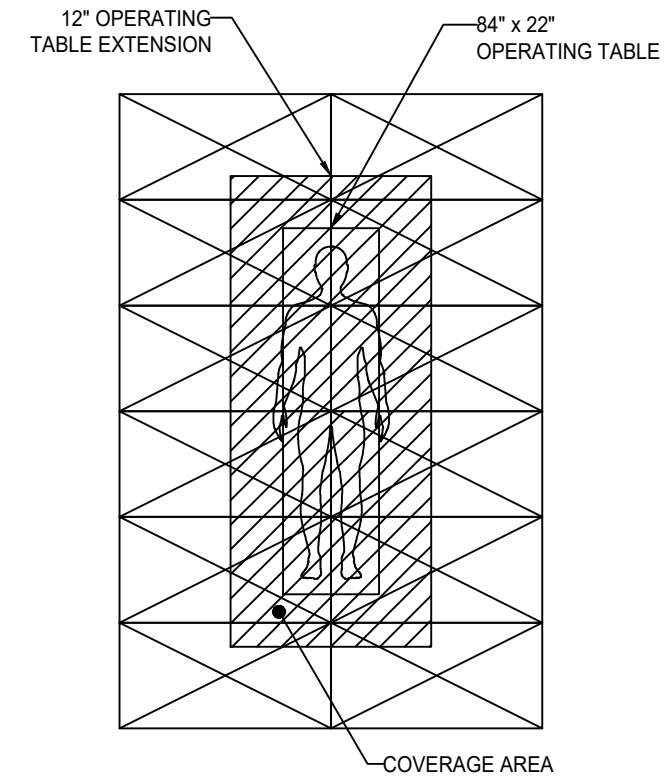


USA AREA = 96 sq. ft. HGWC AREA = 96 sq. ft.

24 x 48 (x12)	A: 24 x 24 (x12) B: 24 x 36 (x4)	A: 24 x 24 (x2) B: 24 x 48 (x2)

- B12 STANDARD WHITE FINISH
- PANEL CUTOUTS FOR BOOMS DONE IN FIELD BY OTHERS
- THE CEILING IS FACTORY PREMANUFACTURED TO SIZES AND TOLERANCE $\pm 1/16"$
- SITE ADJUSTMENTS TO PERIMETER SOFFITS AND/OR DRYWALL MAY BE REQUIRED AND ARE THE RESPONSIBILITY OF THE INSTALLER
- ASHRAE 170 VERIFICATION IS SHOWN TO ASSIST IN PROJECT COORDINATION. FINAL ASHRAE 170 COMPLIANCE, AS WELL AS COMPLIANCE WITH ALL APPLICABLE LOCAL CODES AND REQUIREMENTS REMAINS THE RESPONSIBILITY OF THE EOR OR INSTALLER ON THE PROJECT

ASHRAE 170-2021 TABLE COVERAGE VERIFICATION - TRADITIONAL OR



THIS LAYOUT COMPLIES WITH ASHRAE 170-2021 7.4.1.b.

ASHRAE 170-2021 7.4.1.a. COMPLIANCE AIRFLOW RANGE	ASHRAE 170-2021 7.4.1.b. COMPLIANCE
2400 - 3360 CFM BASED ON 96 SQFT	0% OF THE 12" OPERATING TABLE EXTENSION USED FOR NON DIFFUSER USES

ASHRAE 170-2021	
7.4.1.a. - THE AIRFLOW SHALL BE UNIDIRECTIONAL, DOWNWARDS, AND THE AVERAGE VELOCITY OF THE DIFFUSERS SHALL BE 25 TO 35 CFM/SQFT (127 TO 178 L/S/QM). THE DIFFUSERS SHALL BE CONCENTRATED TO PROVIDE AN AIRFLOW PATTERN OVER THE PATIENT AND SURGICAL TEAM.	
7.4.1.b. - THE COVERAGE AREA OF THE PRIMARY SUPPLY DIFFUSER ARRAY SHALL EXTEND A MINIMUM OF 12 IN. (305 mm) BEYOND THE FOOTPRINT OF THE SURGICAL TABLE ON EACH SIDE. WITHIN THE PORTION OF THE PRIMARY SUPPLY DIFFUSER ARRAY THAT CONSISTS OF AN AREA ENCOMPASSING 12 IN. (305mm) ON EACH SIDE OF THE FOOTPRINT OF THE SURGICAL TABLE, NO MORE THAN 30% OF THIS PORTION OF THE PRIMARY SUPPLY DIFFUSER ARRAY AREA SHALL BE USED FOR NON DIFFUSER USES SUCH AS LIGHTS, GAS COLUMNS, EQUIPMENT BOOMS, ACCESS PANELS, SPRINKLERS, ETC.	

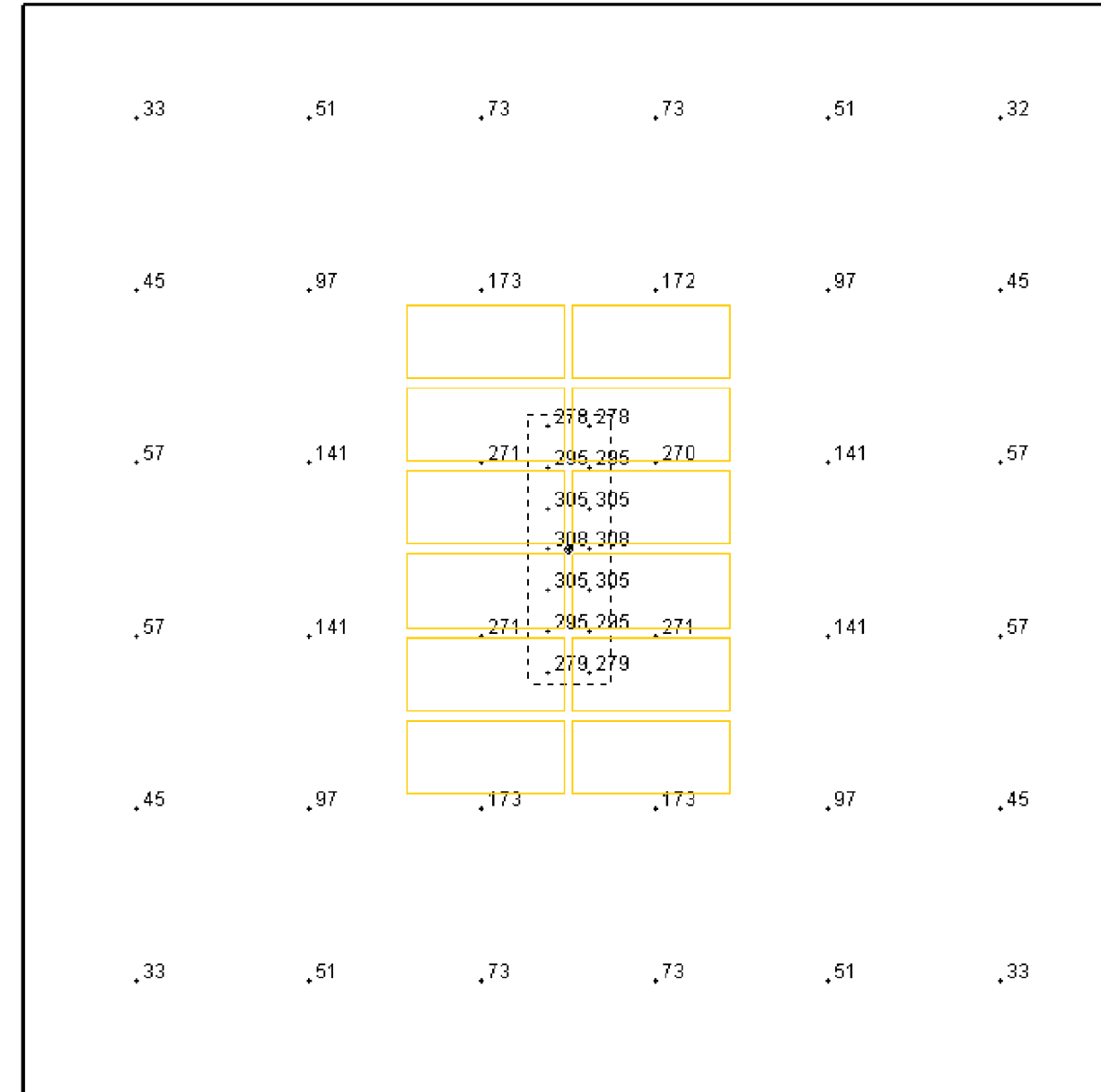
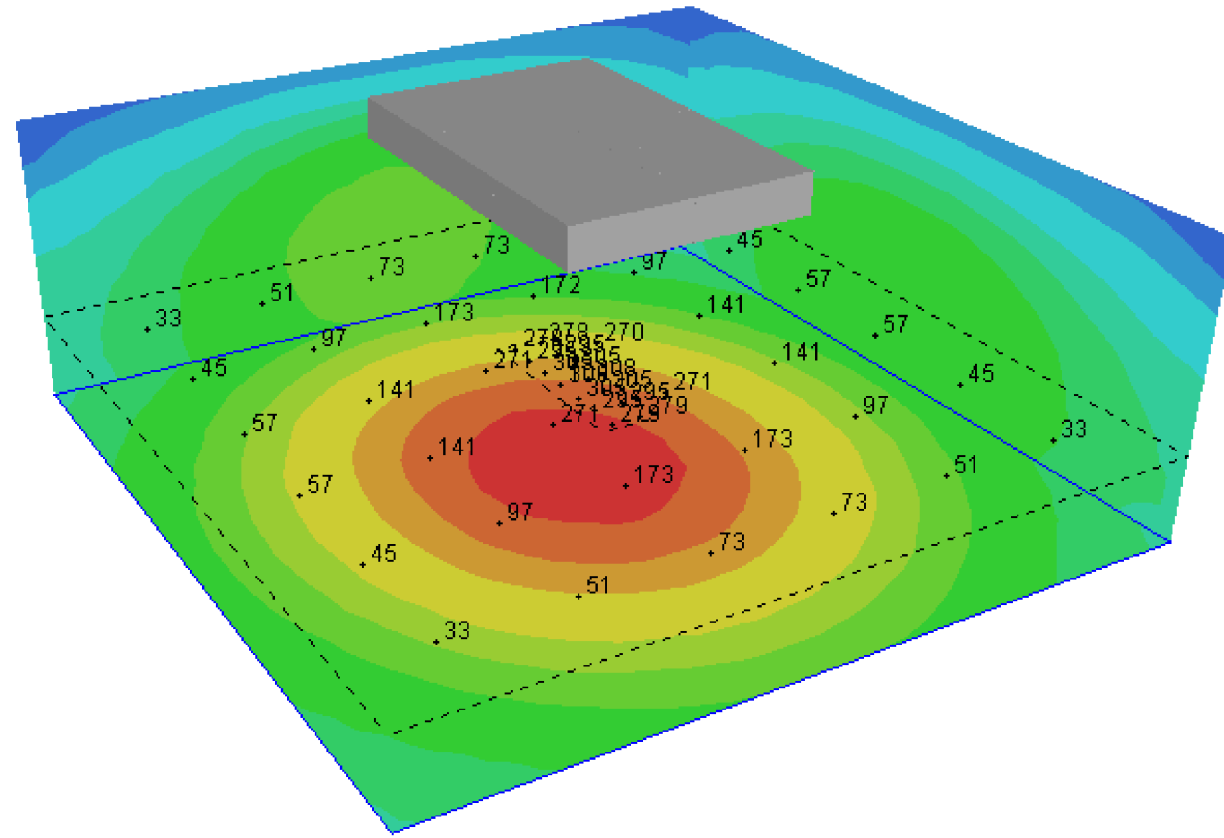
PRICE | CRITICAL ENVIRONMENTS

Project:

USASA-2-1	276328	Revision: 1A	05-17-2024
-----------	--------	--------------	------------

ULTRASUITE® + STRUCTURE

OPERATING ROOM DIFFUSER SYSTEM WITH INTEGRATED LED LIGHTING AND ALUMINUM STRUCTURAL SUPPORT PHOTOMETRIC ANALYSIS - TRADITIONAL OR



OPERATING TABLE		OPERATING AREA	
MAXIMUM	308 fc	MAXIMUM	271 fc
AVERAGE	295 fc	AVERAGE	104 fc

LUMINAIRE HEIGHT: 10 FT
CALCULATION ZONE: 3 FT



Project:

276328

Revision: 1A

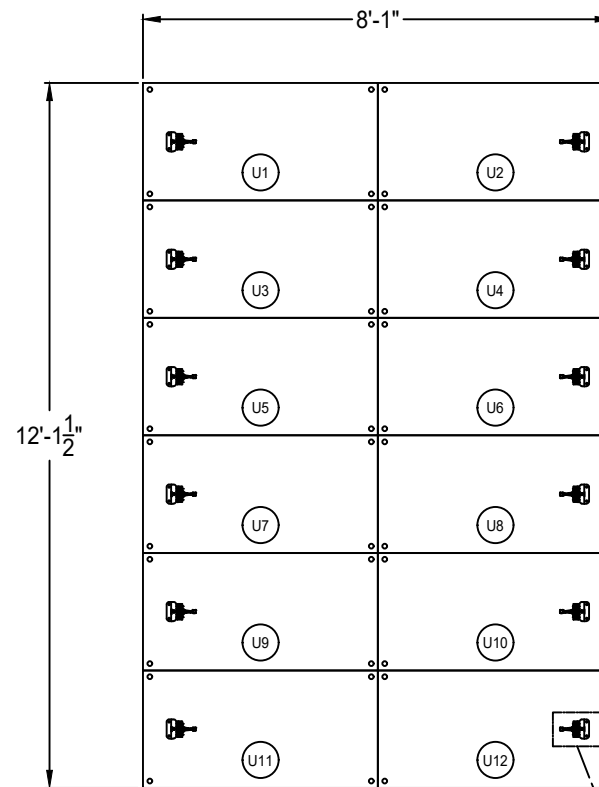
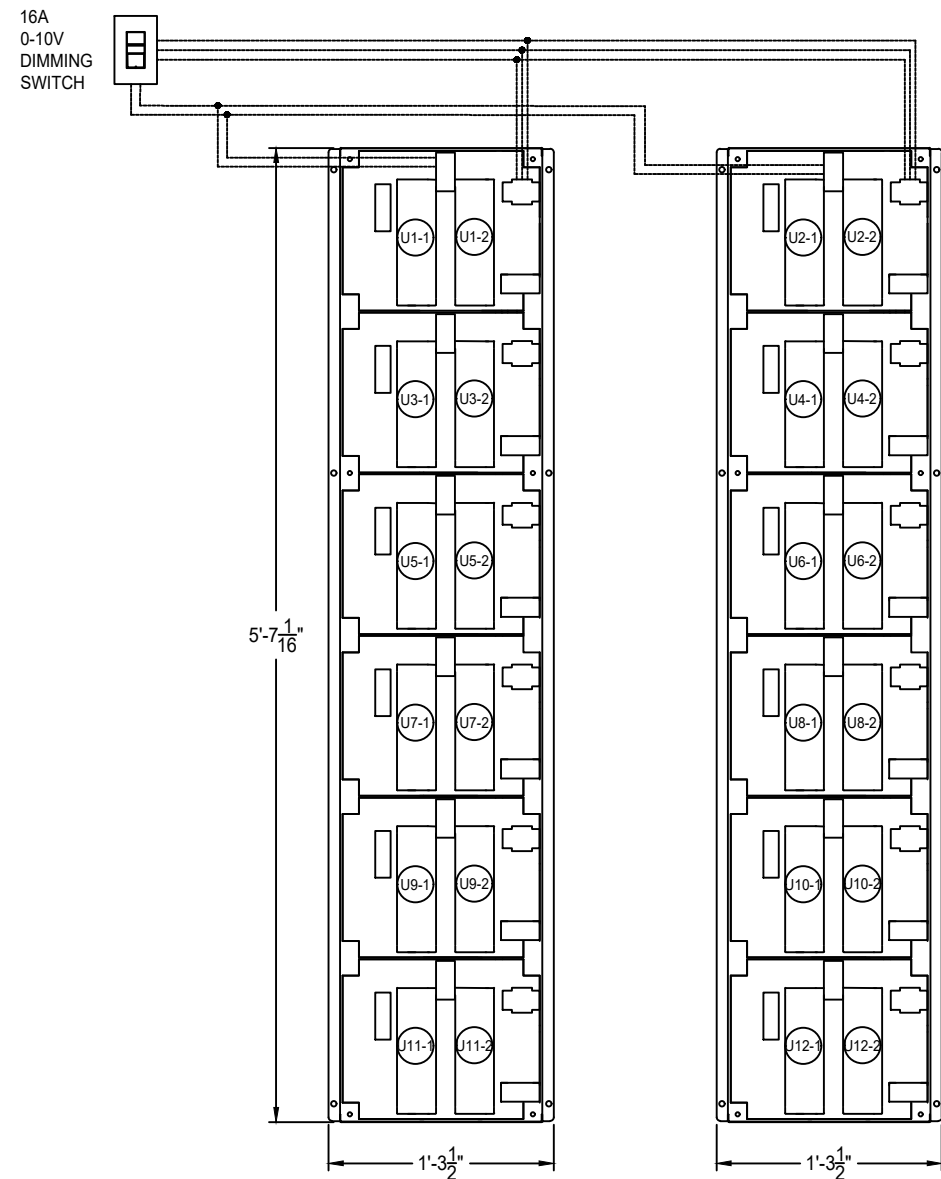
05-17-2024

- PHOTOMETRIC ANALYSIS BASED ON A 3' CALCULATION ZONE, 720 ROOM SQFT & 10' CEILING HEIGHT.
- ANSII/IES RP-29-16 RECOMMENDS 3000 LUX (279 FC) AT THE OPERATING TABLE
- THE CALCULATED VALUES REFLECT ADDITIONAL SPACE LIGHTING BY OTHERS.
- LIGHTING ANALYSIS HAS BEEN PERFORMED USING THIRD PARTY LAB TESTED .IES FILES.
- THIS LAYOUT REFLECTS TWO ROWS OF 5000K, 90+ CRI LEDS PER MODULE. A THIRD ROW, HIGH OUTPUT OPTION IS AVAILABLE.
- LIGHTING CALCULATIONS ARE ESTIMATED USING BEST PRACTICE AND MAY DIFFER SLIGHTLY FROM ACTUAL FIELD CONDITIONS.

ULTRASUITE® + STRUCTURE

OPERATING ROOM DIFFUSER SYSTEM WITH INTEGRATED LED LIGHTING AND ALUMINUM STRUCTURAL SUPPORT

○ URDC ULTRA REMOTE DRIVER CABINETS - SINGLE DIMMING ZONE (100 TO 1% DIMMING) - TRADITIONAL OR

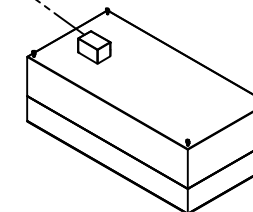


CABINET 1 - 1 OF 2 - CONTROLS 6 MODULES WITH 12 DRIVERS

DRIVER TAG	LED WATTAGE	DRIVER TAG	LED WATTAGE
U1-1	88	U1-2	88
U3-1	88	U3-2	88
U5-1	88	U5-2	88
U7-1	88	U7-2	88
U9-1	88	U9-2	88
U11-1	88	U11-2	88
TOTAL WATTAGE:		AC CURRENT:	
1056		4.8A/277VAC	

CABINET 2 - 2 OF 2 - CONTROLS 6 MODULES WITH 12 DRIVERS

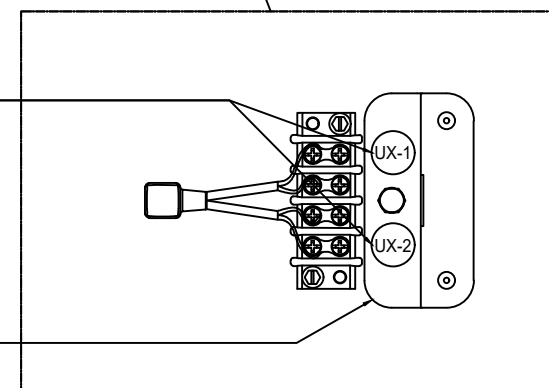
DRIVER TAG	LED WATTAGE	DRIVER TAG	LED WATTAGE
U2-1	88	U2-2	88
U4-1	88	U4-2	88
U6-1	88	U6-2	88
U8-1	88	U8-2	88
U10-1	88	U10-2	88
U12-1	88	U12-2	88
TOTAL WATTAGE:		AC CURRENT:	
1056		4.8A/277VAC	



EACH STANDARD MODULE COMES WITH TWO ROWS OF LEDS THAT EACH REQUIRE ONE (+ & -) LOW VOLTAGE FIELD CONNECTION AND ARE NOTED BY A "UX-X" LABEL. A THIRD ROW, HIGH OUTPUT OPTION IS AVAILABLE IF REQUIRED.

EACH STANDARD MODULE COMES WITH 2 ROWS OF LED LIGHTS AND EACH ROW OF LIGHTS IS NOTED BY A "UX-X" LABEL. THE "UX" CORRESPONDS TO AN INDIVIDUAL MODULE REFERENCED IN THE RCP AND THE "-1" AND "-2" CORRESPONDS TO THE ROW OF LEDS FOR THAT MODULE. EACH "UX-X" LABEL CORRESPONDS TO ONE (+ & -) LOW VOLTAGE WIRE TO BE FIELD CONNECTED TO URDC DRIVER CABINET AS PER THE MATCHING LABELS. EACH 100W DRIVER CAN POWER 1 ROW OF LEDS (ONE HALF OF A MODULE) AND EACH 600W DRIVER CAN CONTROL 6 ROWS OF LEDS (3 MODULES)

EACH MODULE COMES WITH A TOP MOUNTED TERMINAL BLOCK ENCLOSURE (COVER NOT SHOWN) FOR LOW VOLTAGE FIELD CONNECTIONS. QUICK CONNECT FITTING IS SEALED THROUGH PLENUM AND ALL INTERNAL WIRING IS COMPLETED IN THE FACTORY. EACH ROW OF LEDS REQUIRES ONE (+&-) LOW VOLTAGE FIELD CONNECTIONS (TWO PER MODULE)



• INSTALLATION WORK AND ELECTRICAL WIRING MUST BE COMPLETED BY A CERTIFIED ELECTRICIAN AND/OR QUALIFIED PERSON(S) IN ACCORDANCE WITH APPLICABLE ELECTRICAL CODES AND STANDARDS



Project:

276328

Revision: 1A

05-17-2024