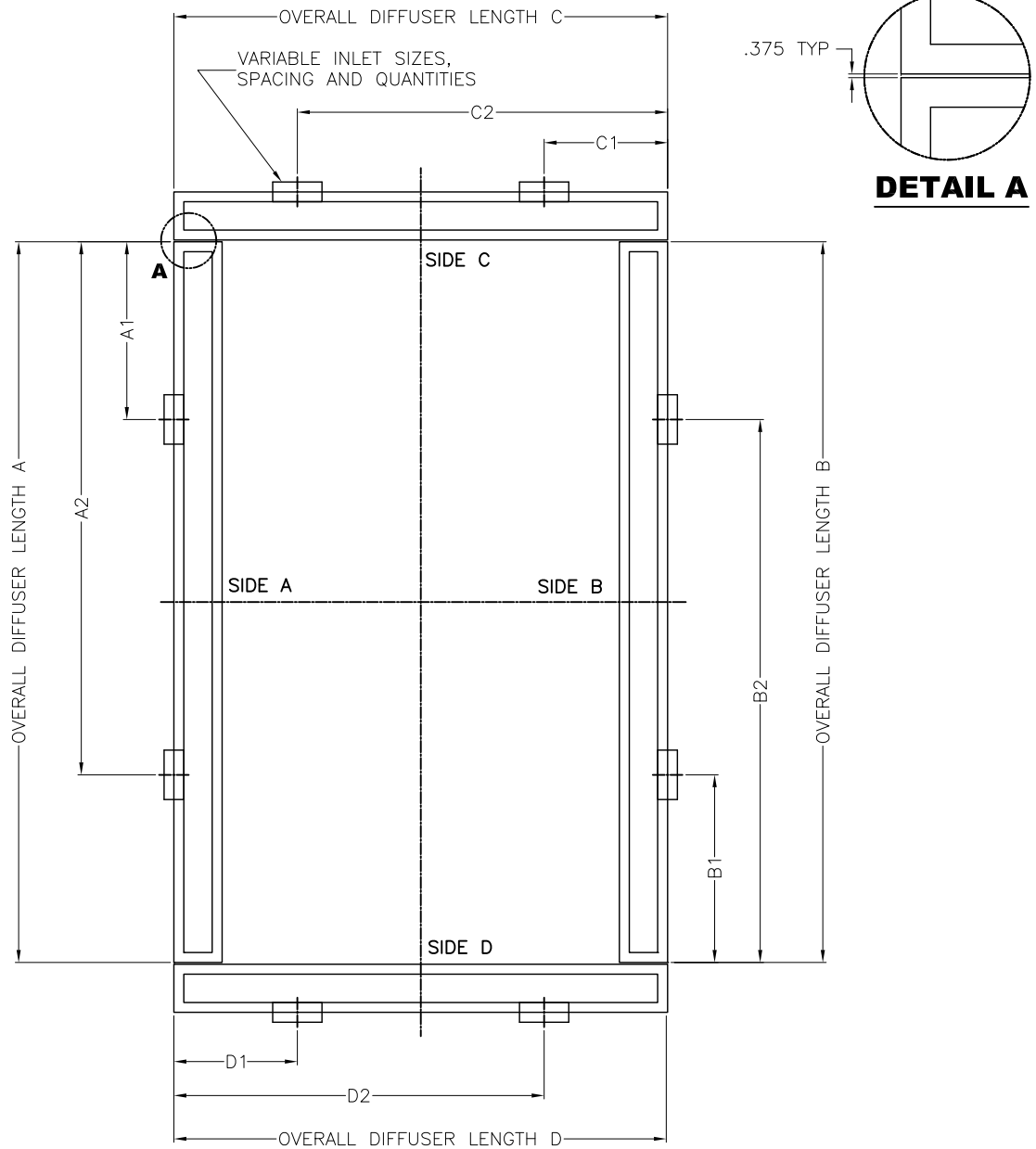


**HOSPITAL OPERATING ROOM DIFFUSER  
MODULAR PLENUMS  
EXAMPLE SYSTEM LAYOUT - TEE BAR INSTALLATION**



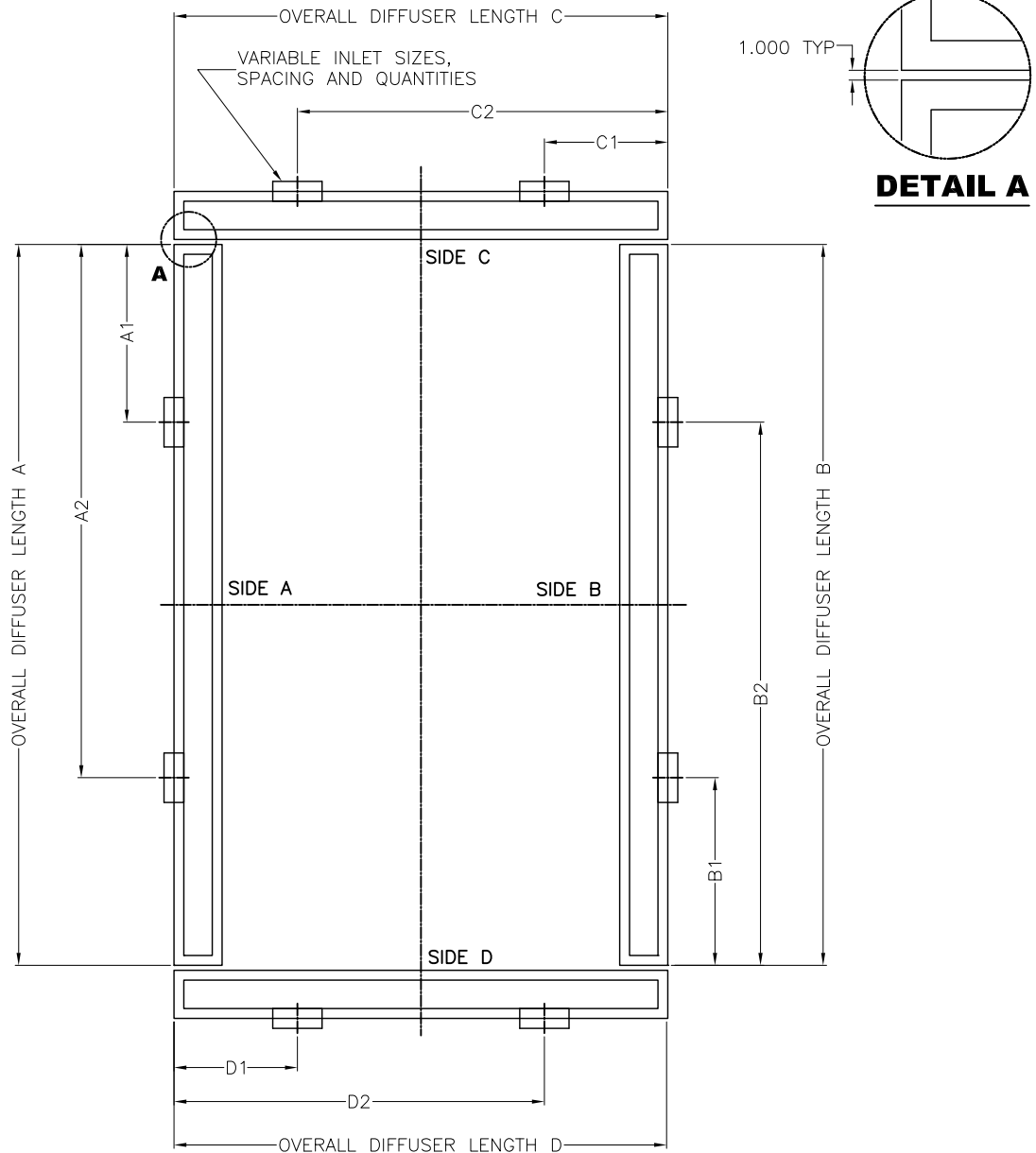
**NOTES:**

- RECOMMENDED SLOT AIRFLOW = 25-45 CFM/FT.
- RECOMMENDED INLET VELOCITY = 500 FPM
- TYPICAL LAYOUT SHOWN, MINIMUM OF ONE INLET PER SIDE OF SYSTEM REQUIRED
- MINIMUM INLET LENGTH = 6" MAXIMUM = 48"
- HANGER BRACKET LOCATIONS CAN BE INDICATED ON PROJECT SPECIFIC SUBMITTALS, IF REQUESTED.
- INTERNAL LAMINAR FLOW DIFFUSER LAYOUT CAN BE SHOWN ON PROJECT SPECIFIC SUBMITTALS, IF REQUESTED.
- PLENUM SECTIONING CAN BE SHOWN ON PROJECT SPECIFIC SUBMITTALS.

ALL METRIC DIMENSIONS ( ) ARE SOFT CONVERTED. IMPERIAL DIMENSIONS ARE CONVERTED TO METRIC AND ROUNDED TO THE NEAREST MILLIMETER.

<b>PROJECT:</b>		<b>PRICE<sup>®</sup></b>	
<b>ENGINEER:</b>		<i>KE</i>	<b>HORD</b> HOSPITAL OPERATING ROOM DIFFUSER
<b>CUSTOMER:</b>			
<b>SUBMITTAL DATE:</b>	<b>REVISION: D</b>	2020/01/08	

**HOSPITAL OPERATING ROOM DIFFUSER  
MODULAR PLENUMS  
EXAMPLE SYSTEM LAYOUT - SURFACE MOUNT INSTALLATION**



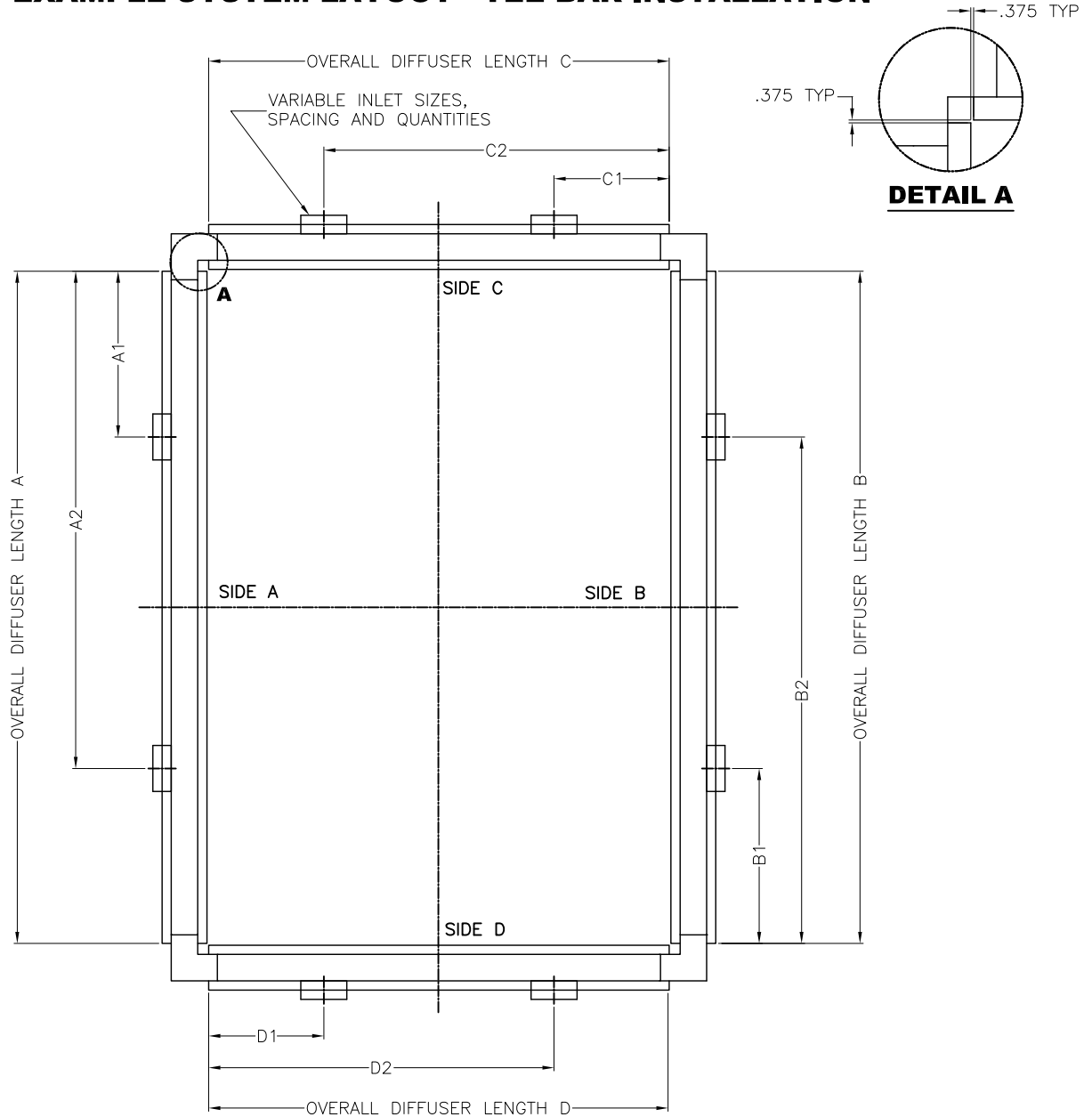
**NOTES:**

- ROUGH OPENING IN CEILING SHOULD BE 8.00" WIDE AND 1.00" SHORTER THAN THE OVERALL DIFFUSER LENGTH
- RECOMMENDED SLOT AIRFLOW = 25-45 CFM/FT.
- RECOMMENDED INLET VELOCITY = 500 FPM
- TYPICAL LAYOUT SHOWN, MINIMUM OF ONE INLET PER SIDE OF SYSTEM REQUIRED.
- MINIMUM INLET LENGTH = 6" MAXIMUM = 48"
- HANGER BRACKET LOCATIONS CAN BE INDICATED ON PROJECT SPECIFIC SUBMITTALS, IF REQUESTED.
- INTERNAL LAMINAR FLOW DIFFUSER LAYOUT CAN BE SHOWN ON PROJECT SPECIFIC SUBMITTALS, IF REQUESTED.
- PLENUM SECTIONING CAN BE SHOWN ON PROJECT SPECIFIC SUBMITTALS.

ALL METRIC DIMENSIONS ( ) ARE SOFT CONVERTED. IMPERIAL DIMENSIONS ARE CONVERTED TO METRIC AND ROUNDED TO THE NEAREST MILLIMETER.

<b>PROJECT:</b>		<b>PRICE</b> <sup>®</sup>	
<b>ENGINEER:</b>		<i>KE</i>	<b>HORD</b>
<b>CUSTOMER:</b>		263978	HOSPITAL OPERATING ROOM DIFFUSER
<b>SUBMITTAL DATE:</b>	<b>REVISION: D</b>	2020/01/08	

**HOSPITAL OPERATING ROOM DIFFUSER  
CONTINUOUS PLENUMS  
EXAMPLE SYSTEM LAYOUT - TEE BAR INSTALLATION**



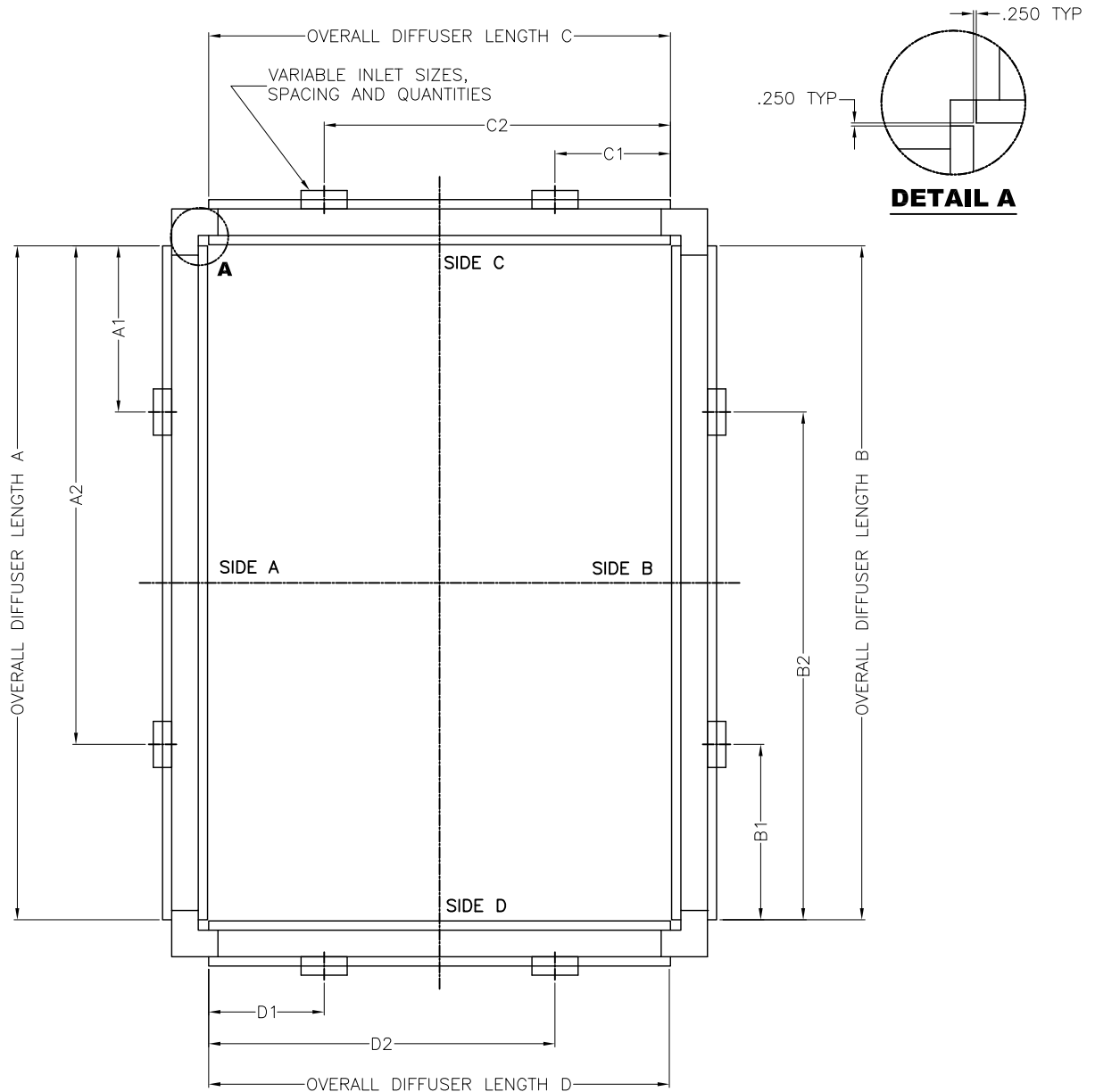
**NOTES:**

- RECOMMENDED SLOT AIRFLOW = 25-45 CFM/FT.
- RECOMMENDED INLET VELOCITY = 500 FPM
- TYPICAL LAYOUT SHOWN, MINIMUM OF ONE INLET PER SIDE OF SYSTEM REQUIRED.
- MINIMUM INLET LENGTH = 6" MAXIMUM = 48"
- HANGER BRACKET LOCATIONS CAN BE INDICATED ON PROJECT SPECIFIC SUBMITTALS, IF REQUESTED.
- INTERNAL LAMINAR FLOW DIFFUSER LAYOUT CAN BE SHOWN ON PROJECT SPECIFIC SUBMITTALS, IF REQUESTED.
- PLENUM SECTIONING CAN BE SHOWN ON PROJECT SPECIFIC SUBMITTALS.

ALL METRIC DIMENSIONS ( ) ARE SOFT CONVERTED. IMPERIAL DIMENSIONS ARE CONVERTED TO METRIC AND ROUNDED TO THE NEAREST MILLIMETER.

<b>PROJECT:</b>		<b>PRICE®</b>	
<b>ENGINEER:</b>		<i>KE</i>	
<b>CUSTOMER:</b>		263978	
<b>SUBMITTAL DATE:</b>		2020/01/08	
<b>REVISION: D</b>		<b>HORD</b> HOSPITAL OPERATING ROOM DIFFUSER	

**HOSPITAL OPERATING ROOM DIFFUSER  
CONTINUOUS PLENUMS  
EXAMPLE SYSTEM LAYOUT - SURFACE MOUNT INSTALLATION**



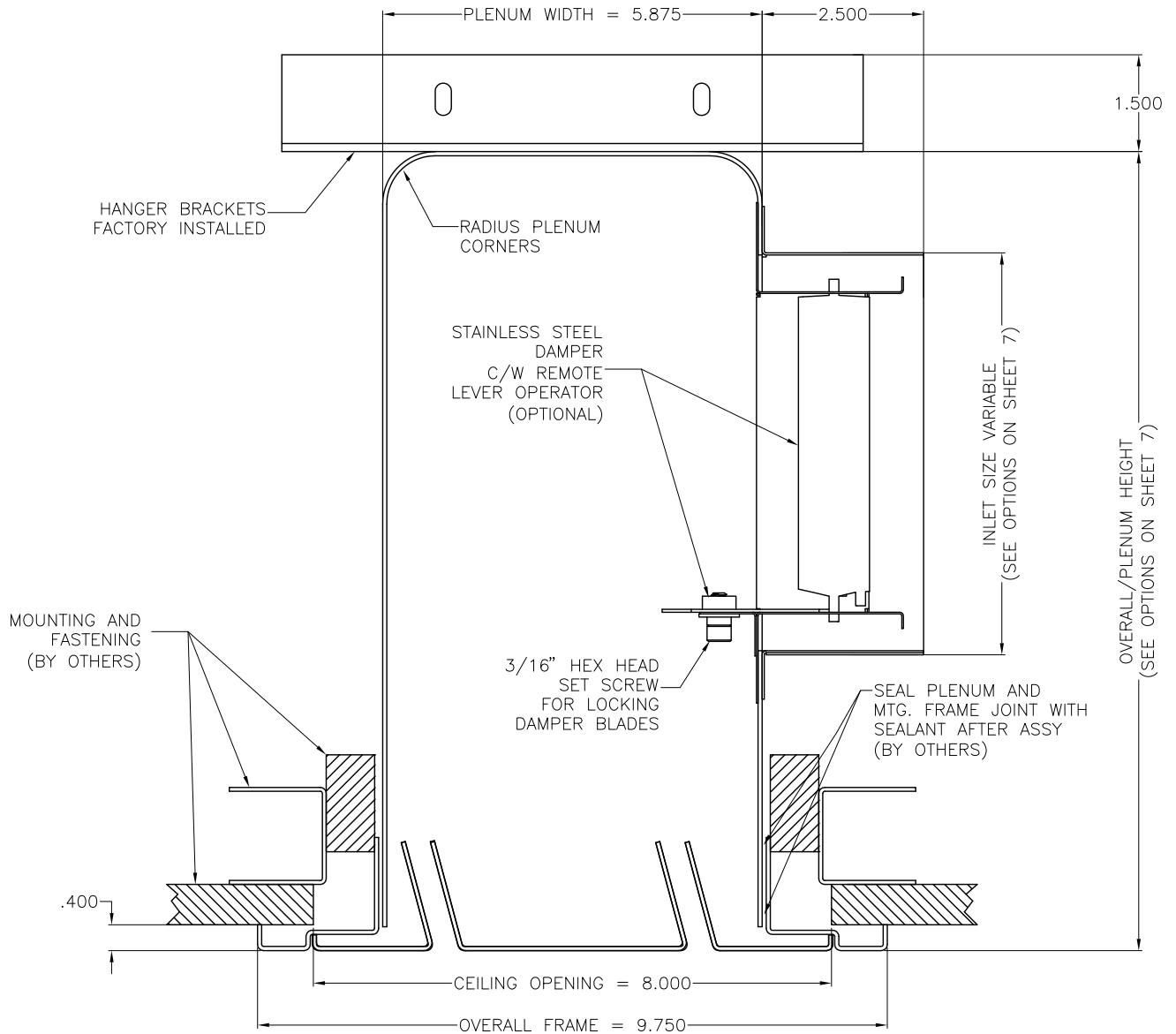
**NOTES:**

- ROUGH OPENING IN CEILING SHOULD BE 8.00" WIDE AND 1.00" SHORTER THAN THE OVERALL DIFFUSER LENGTH
- RECOMMENDED SLOT AIRFLOW = 25-45 CFM/FT.
- RECOMMENDED INLET VELOCITY = 500 FPM
- TYPICAL LAYOUT SHOWN, MINIMUM OF ONE INLET PER SIDE OF SYSTEM REQUIRED.
- MINIMUM INLET LENGTH = 6" MAXIMUM = 48"
- HANGER BRACKET LOCATIONS CAN BE INDICATED ON PROJECT SPECIFIC SUBMITTALS, IF REQUESTED.
- INTERNAL LAMINAR FLOW DIFFUSER LAYOUT CAN BE SHOWN ON PROJECT SPECIFIC SUBMITTALS, IF REQUESTED.
- PLENUM SECTIONING CAN BE SHOWN ON PROJECT SPECIFIC SUBMITTALS.

ALL METRIC DIMENSIONS ( ) ARE SOFT CONVERTED. IMPERIAL DIMENSIONS ARE CONVERTED TO METRIC AND ROUNDED TO THE NEAREST MILLIMETER.

<b>PROJECT:</b>		<b>PRICE®</b>	
<b>ENGINEER:</b>		<i>KE</i>	<b>HORD</b> HOSPITAL OPERATING ROOM DIFFUSER
<b>CUSTOMER:</b>		263978	
<b>SUBMITTAL DATE:</b>	<b>REVISION: D</b>	2020/01/08	

**HOSPITAL OPERATING ROOM DIFFUSER  
SURFACE MOUNT OPTION  
SECTION VIEW**



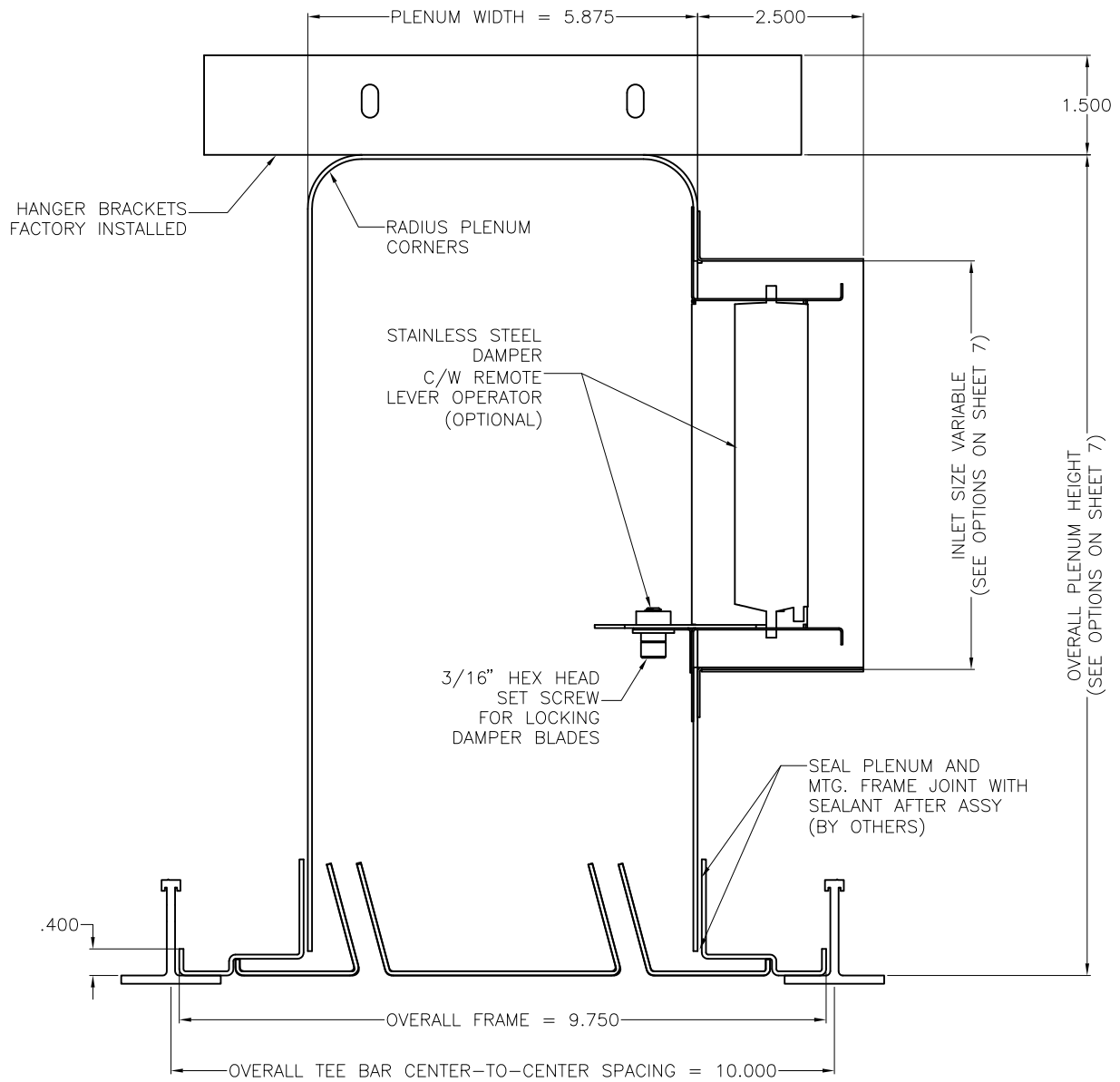
**NOTES:**

- DAMPER ADJUSTABLE ROOM SIDE WITHOUT REMOVAL OF THE DIFFUSER FACE
- MANUFACTURED TO SIZES AND TOLERANCE +/- .032"
- INSTALLATION AND MOUNTING OF THE HORD IS THE RESPONSIBILITY OF THE INSTALLER

ALL METRIC DIMENSIONS ( ) ARE SOFT CONVERTED. IMPERIAL DIMENSIONS ARE CONVERTED TO METRIC AND ROUNDED TO THE NEAREST MILLIMETER.

<b>PROJECT:</b>		<b>PRICE</b> <sup>®</sup>	
<b>ENGINEER:</b>		<i>KE</i>	<b>HORD</b>
<b>CUSTOMER:</b>		263978	HOSPITAL OPERATING ROOM DIFFUSER
<b>SUBMITTAL DATE:</b>	<b>REVISION: D</b>	2020/01/08	

**HOSPITAL OPERATING ROOM DIFFUSER  
TEE BAR OPTION  
SECTION VIEW**



**NOTES:**

- DAMPER ADJUSTABLE ROOM SIDE WITHOUT REMOVAL OF THE DIFFUSER FACE
- MANUFACTURED TO SIZES AND TOLERANCE  $\pm .032$ "
- INSTALLATION AND MOUNTING OF THE HORD IS THE RESPONSIBILITY OF THE INSTALLER

ALL METRIC DIMENSIONS ( ) ARE SOFT CONVERTED. IMPERIAL DIMENSIONS ARE CONVERTED TO METRIC AND ROUNDED TO THE NEAREST MILLIMETER.

<b>PROJECT:</b>		<b>PRICE</b> <sup>®</sup>	
<b>ENGINEER:</b>		<i>KE</i>	<b>HORD</b>
<b>CUSTOMER:</b>		263978	HOSPITAL OPERATING ROOM DIFFUSER
<b>SUBMITTAL DATE:</b>	<b>REVISION: D</b>	2020/01/08	

**HOSPITAL OPERATING ROOM DIFFUSER**

**PLENUM HEIGHT OPTIONS:**

- 8"       14"
- 10"     16"
- 12"

**INLET HEIGHT OPTIONS (DEPENDENT ON PLENUM HEIGHT):**

- 3"       7"
- 4"       8"
- 5"       9"
- 6"       10"

**MOUNTING STYLE OPTIONS:**

- TEE BAR / LAY-IN
- SURFACE MOUNT

**END CAP STYLE OPTIONS:**

- MECHANICALLY FASTENED
- CONTINUOUSLY WELDED
- (ONLY FOR PLENUM MATERIAL AL-14 AND SS-20)
- 90° CORNER, MECHANICALLY FASTENED

**INLET DAMPER OPTIONS:**

- NONE
- VCS3SS - STAINLESS STEEL OPPOSED BLADE DAMPER

**EXTERNAL INSULATION OPTIONS:**

- NONE
- AFI - EXTERNAL 1/2" FIBREGLASS INSULATION WITH FOIL FACING

**PLENUM MATERIAL OPTIONS:**

- AL-14 (.064")
- AL-18 (.040")
- SS-20 (.035")
- SS-23 (.025")

**FACE MATERIAL OPTIONS:**

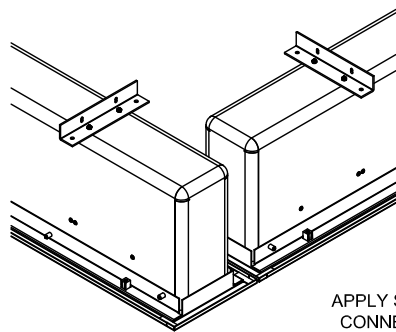
- AL-14 (.064")
- SS-20 (.035")

**PLENUM FINISH OPTIONS:**

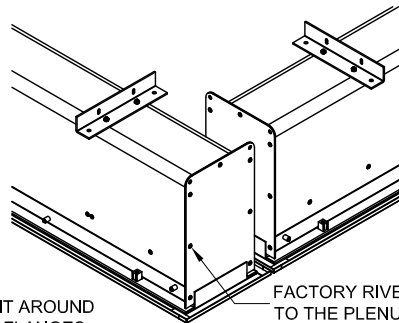
- AL-B12 - STANDARD WHITE
- AL-B25 - CUSTOM
- 2B - POLISHED STAINLESS STEEL
- WM - WASHED MILL ALUMINUM

**FACE FINISH OPTIONS:**

- AL-B12 - STANDARD WHITE
- AL-B25 - CUSTOM
- #4 - BRUSHED STAINLESS STEEL
- WM - WASHED MILL ALUMINUM

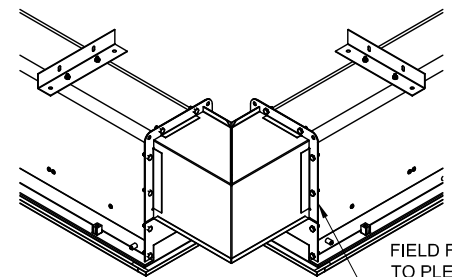


FORMED, CONTINUOUSLY WELDED



FORMED, MECHANICALLY FASTENED

**MODULAR**



APPLY SEALANT AROUND CONNECTION FLANGES (BY OTHERS)

FIELD FASTENED TO PLENUM USING 1/4" HARDWARE PROVIDED (BY OTHERS)

90° CORNER, MECHANICALLY FASTENED

**CONTINUOUS**

ALL METRIC DIMENSIONS ( ) ARE SOFT CONVERTED. IMPERIAL DIMENSIONS ARE CONVERTED TO METRIC AND ROUNDED TO THE NEAREST MILLIMETER.

<b>PROJECT:</b>		<b>PRICE</b> <sup>®</sup>	
<b>ENGINEER:</b>		<i>KE</i>	<b>HORD</b> HOSPITAL OPERATING ROOM DIFFUSER
<b>CUSTOMER:</b>		263978	
<b>SUBMITTAL DATE:</b>	<b>REVISION: D</b>	2020/01/08	