

**FFUCA - FAN FILTER UNIT COMPONENTS & ACCESSORIES
INDEX**

ACCESSORY

HARDWARE 2

FACE ASSEMBLY 3

PRE-FILTER 4

CONTROL BOX ASSEMBLY 5 - 6

CONTROL BOX COMPONENTS 7 - 8

MOTOR & BLOWER ASSEMBLY 9

MOTOR 10

WHEEL 10

ALL METRIC DIMENSIONS () ARE SOFT CONVERTED. IMPERIAL DIMENSIONS ARE CONVERTED TO METRIC AND ROUNDED TO THE NEAREST MILLIMETER.

PROJECT:		PRICE [®]
ENGINEER:		
CUSTOMER:		<i>KC</i>
SUBMITTAL DATE:		273527
SPEC. SYMBOL:		SEPT 2021
		FFUCA FFU COMPONENTS & ACCESSORIES

**FFUCA - FAN FILTER UNIT COMPONENTS & ACCESSORIES
HARDWARE**

BACK TO INDEX



FOR:
ALL DIFFUSERS

SAFETY RETAINER CABLE
(P/N 037200-002)

FOR:
FFU-X-X, PURAFLO, CARES-X-X



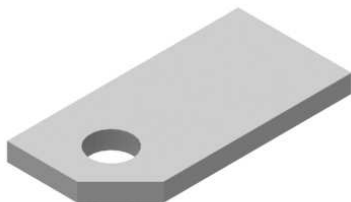
FILTER RETAINER THUMB SCREW
(P/N 032663-001)

FOR:
UFFU-X-X



FILTER RETAINER SCREW
(P/N 031968-003)

FOR:
FFU-X-X, PURAFLO, CARES-X-X, UFFU-X-X



FILTER RETAINER TAB
(P/N 900021-001)

FOR:
ALL DIFFUSERS

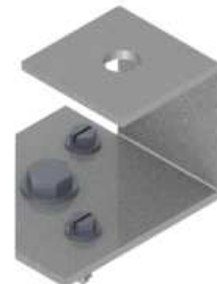


QUARTER TURN STUD
(P/N 041747-002)



QUARTER TURN RECEPTACLE
(P/N 041746-001)

FOR: FFU-X-X



SEISMIC BRACKETS
ONE SET OF x4 BRACKETS
(P/N 504737-001)

- A VALID LINE STRING AND PRICE
ORDER NUMBER IS REQUIRED
FOR SEISMIC OSHPD LABEL

ALL METRIC DIMENSIONS () ARE SOFT CONVERTED. IMPERIAL DIMENSIONS ARE CONVERTED TO METRIC AND ROUNDED TO THE NEAREST MILLIMETER.

PROJECT:

ENGINEER:

CUSTOMER:

SUBMITTAL DATE:

SPEC. SYMBOL:



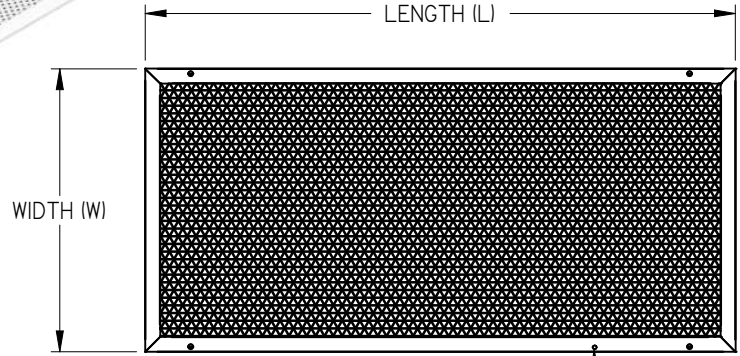
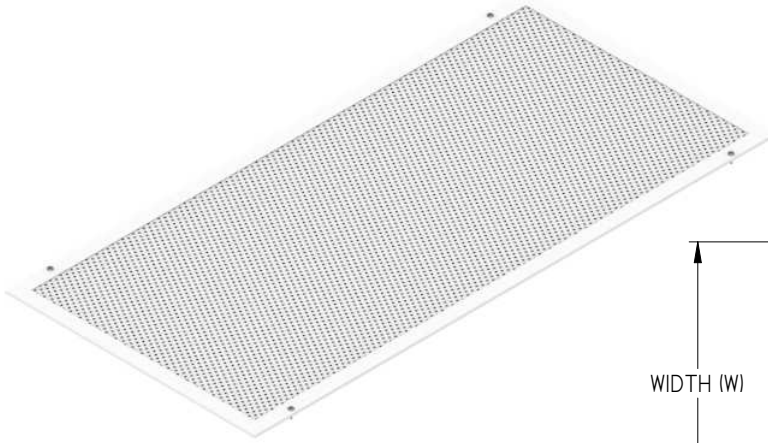
273527

SEPT 2021

FFUCA
FFU
COMPONENTS &
ACCESSORIES

**FFUCA - FAN FILTER UNIT COMPONENTS & ACCESSORIES
FACE ASSEMBLY**

BACK TO INDEX



LED - FACE MOUNTED LED INDICATOR HOLE (OPTIONAL)

ALUMINUM				
MODEL	NOMINAL SIZE		OPTION	P/N
	WIDTH (W)	LENGTH (L)		
<input type="checkbox"/> FFU-X-X <input type="checkbox"/> PURAFLO	24	24	-	504094-001
			LED	504094-002
		36	-	504005-001
			LED	504005-002
		48	-	503893-001
			LED	503893-002
<input type="checkbox"/> UFFU-X-X	24	24	-	507164-022
			LED	507164-122
		36	-	507164-023
			LED	507164-123
		48	-	507164-024
			LED	507164-124
<input type="checkbox"/> CARES-X-X	24	48	-	503893-001
			LED	503893-002
			FRFD	507833-001

STAINLESS STEEL				
MODEL	NOMINAL SIZE		OPTION	P/N
	WIDTH (W)	LENGTH (L)		
<input type="checkbox"/> FFU-X-X <input type="checkbox"/> PURAFLO	24	24	-	504095-101
			LED	504095-102
		36	-	504023-101
			LED	504023-102
		48	-	503993-101
			LED	503993-102

- STAINLESS STEEL CONSTRUCTION - 304 PERF SCREEN & FRAMES

- FINISH:

- #4 - BRUSHED FINISH
- B12 - STANDARD WHITE

- ALUMINUM CONSTRUCTION (EXTRUDED FRAMES)

- FINISH:

- B12 - STANDARD WHITE
- WM - WASHED MILL ALUMINUM

ALL METRIC DIMENSIONS () ARE SOFT CONVERTED. IMPERIAL DIMENSIONS ARE CONVERTED TO METRIC AND ROUNDED TO THE NEAREST MILLIMETER.

PROJECT:		 273527	FFUCA FFU COMPONENTS & ACCESSORIES
ENGINEER:			
CUSTOMER:			
SUBMITTAL DATE:	SPEC. SYMBOL:		

**FFUCA - FAN FILTER UNIT COMPONENTS & ACCESSORIES
PRE-FILTER**

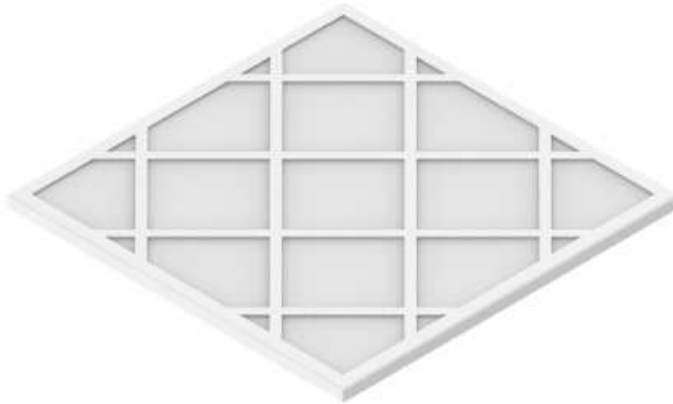
BACK TO INDEX

WASHABLE PRE-FILTER



WPF (SUPPLY UNITS)		
NOMINAL SIZE		P/N
DIFFUSER	FILTER	
<input type="checkbox"/> 2x4, 2x3	19.5 x 19.5	045964-003
<input type="checkbox"/> 2x2	15.5 x 15.5	045964-005

MERV8 PRE-FILTER



MERV8 (SUPPLY UNITS)		
NOMINAL SIZE		P/N
DIFFUSER	FILTER	
<input type="checkbox"/> 2x4, 2x3	19.5 x 19.5	042313-044
<input type="checkbox"/> 2x2	15.5 x 15.5	042313-055

MERV8E (EXHAUST UNITS)		
NOMINAL SIZE		P/N
DIFFUSER	FILTER	
<input type="checkbox"/> 2x2	19.5 x 19.5	042313-057
<input type="checkbox"/> 2x3	20.0 x 32.0	042313-058
<input type="checkbox"/> 2x4	20.0 x 44.0	042313-056

ALL METRIC DIMENSIONS () ARE SOFT CONVERTED. IMPERIAL DIMENSIONS ARE CONVERTED TO METRIC AND ROUNDED TO THE NEAREST MILLIMETER.

PROJECT:		PRICE
ENGINEER:		
CUSTOMER:		<i>KC</i>
SUBMITTAL DATE:		273527
SPEC. SYMBOL:		SEPT 2021
FFUCA FFU COMPONENTS & ACCESSORIES		

**FFUCA - FAN FILTER UNIT COMPONENTS & ACCESSORIES
CONTROL BOX ASSEMBLY - ECM**

BACK TO INDEX



*ECMSC OPTION AND 277V PC OPTION SHOWN

	POWER CORD (PC)	MOTOR	VOLTAGE	CONTROLLER	P/N
<input type="checkbox"/>	-	ECM	115	ECMSC	507079-006
<input type="checkbox"/>	PC	ECM	115	ECMSC	507079-007
<input type="checkbox"/>	-	ECM	115	BFC	507079-018
<input type="checkbox"/>	PC	ECM	115	BFC	507079-019
<input type="checkbox"/>	-	ECM	208/240	ECMSC	507080-006
<input type="checkbox"/>	-	ECM	208/240	BFC	507080-018
<input type="checkbox"/>	-	ECM	277	ECMSC	507081-006
<input type="checkbox"/>	PC	ECM	277	ECMSC	507081-007
<input type="checkbox"/>	-	ECM	277	BFC	507081-018
<input type="checkbox"/>	PC	ECM	277	BFC	507081-019

- ALL CONTROL BOXES COME WITH POWER HARNESS AND CONTROL CABLE FOR MOTOR CONNECTIONS

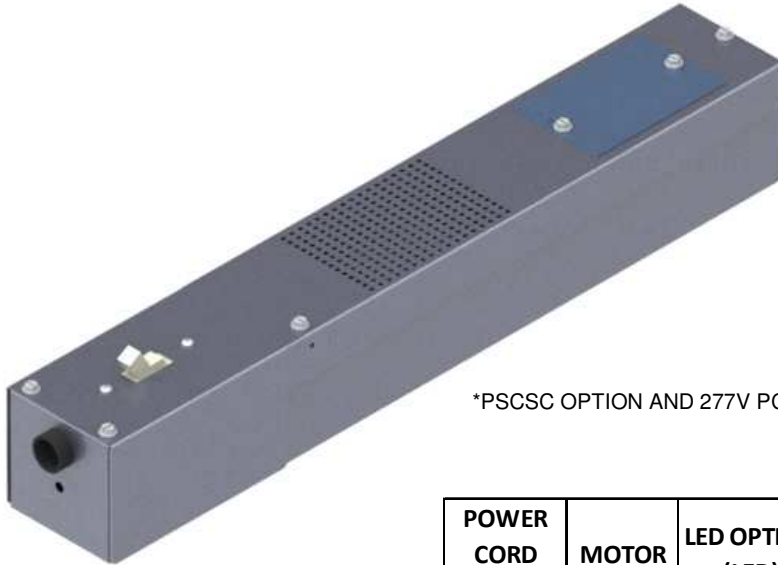
- PC OPTION - COMES WITH POWER CORD

ALL METRIC DIMENSIONS () ARE SOFT CONVERTED. IMPERIAL DIMENSIONS ARE CONVERTED TO METRIC AND ROUNDED TO THE NEAREST MILLIMETER.

PROJECT:		PRICE
ENGINEER:		
CUSTOMER:		<i>KC</i>
SUBMITTAL DATE:		273527
SPEC. SYMBOL:		SEPT 2021
FFUCA FFU COMPONENTS & ACCESSORIES		

**FFUCA - FAN FILTER UNIT COMPONENTS & ACCESSORIES
CONTROL BOX ASSEMBLY - PSC**

BACK TO INDEX





*PSCSC OPTION AND 277V PC OPTION SHOWN

- ALL CONTROL BOXES COME WITH POWER HARNESS AND CONTROL CABLE FOR MOTOR CONNECTIONS
- PC OPTION - COMES WITH POWER CORD

	POWER CORD (PC)	MOTOR	LED OPTION (LED)	VOLTAGE	CONTROLLER	P/N
<input type="checkbox"/>	-	PSC	-	115	PSC-WK	507289-003
<input type="checkbox"/>	PC	PSC	-	115	PSC-WK	507289-004
<input type="checkbox"/>	-	PSC	-	115	PSCSC	507289-006
<input type="checkbox"/>	PC	PSC	-	115	PSCSC	507289-007
<input type="checkbox"/>	-	PSC	LED	115	PSC-WK	507289-013
<input type="checkbox"/>	PC	PSC	LED	115	PSC-WK	507289-014
<input type="checkbox"/>	-	PSC	LED	115	PSCSC	507289-016
<input type="checkbox"/>	PC	PSC	LED	115	PSCSC	507289-017
<input type="checkbox"/>	-	PSC	-	208/240	PSC-WK	507290-003
<input type="checkbox"/>	-	PSC	-	208/240	PSCSC	507290-006
<input type="checkbox"/>	-	PSC	LED	208/240	PSC-WK	507290-013
<input type="checkbox"/>	-	PSC	LED	208/240	PSCSC	507290-016
<input type="checkbox"/>	-	PSC	-	277	PSC-WK	507291-003
<input type="checkbox"/>	PC	PSC	-	277	PSC-WK	507291-004
<input type="checkbox"/>	-	PSC	-	277	PSCSC	507291-006
<input type="checkbox"/>	PC	PSC	-	277	PSCSC	507291-007
<input type="checkbox"/>	-	PSC	LED	277	PSC-WK	507291-013
<input type="checkbox"/>	PC	PSC	LED	277	PSC-WK	507291-014
<input type="checkbox"/>	-	PSC	LED	277	PSCSC	507291-016
<input type="checkbox"/>	PC	PSC	LED	277	PSCSC	507291-017

ALL METRIC DIMENSIONS () ARE SOFT CONVERTED. IMPERIAL DIMENSIONS ARE CONVERTED TO METRIC AND ROUNDED TO THE NEAREST MILLIMETER.

PROJECT:		  273527	FFUCA FFU COMPONENTS & ACCESSORIES
ENGINEER:			
CUSTOMER:			
SUBMITTAL DATE:	SPEC. SYMBOL:		

**FFUCA - FAN FILTER UNIT COMPONENTS & ACCESSORIES
CONTROL BOX COMPONENTS**

BACK TO INDEX



ECM SPEED CONTROLLER
(P/N 232953-100)



PSC WALL MOUNTED SPEED CONTROLLER 115V
(P/N 019543-003)

PSC WALL MOUNTED SPEED CONTROLLER 208/240/277V
(P/N 019543-004)



PSC SPEED CONTROLLER
(P/N 233563-100)



BFC CONTROL BOARD
(P/N 232953-241)

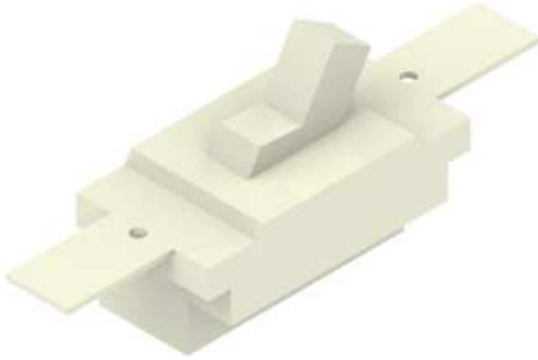
*COMES WITH SHEET METAL PLATE INSTALLED (NOT SHOWN)

ALL METRIC DIMENSIONS () ARE SOFT CONVERTED. IMPERIAL DIMENSIONS ARE CONVERTED TO METRIC AND ROUNDED TO THE NEAREST MILLIMETER.

PROJECT:		price
ENGINEER:		
CUSTOMER:		<i>KC</i>
SUBMITTAL DATE:		273527
SPEC. SYMBOL:		SEPT 2021
FFUCA FFU COMPONENTS & ACCESSORIES		

**FFUCA - FAN FILTER UNIT COMPONENTS & ACCESSORIES
CONTROL BOX COMPONENTS**

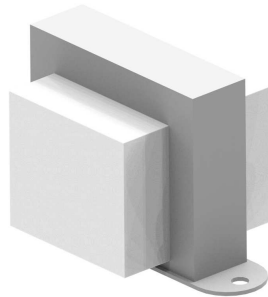
BACK TO INDEX



- DISCONNECT SWITCH, 15A FOR 115V (NO PC) OR 277V (P/N 019903-001)
- DISCONNECT SWITCH, 30A FOR 208/240V OR 115V (w/ PC) (P/N 019903-003)

- POWER CORD, 115V, 8 FT (P/N 019944-001)
- POWER CORD, 277V, 6 FT (P/N 019944-002)

- ECMSC 4-PIN CONTROL CABLE, 36" (P/N 019186-019)
- BFC 6-PIN CONTROL CABLE, 36" (P/N 019186-020)
- BFC LED CABLE (P/N 243912-300)
- 115V MOTOR POWER HARNESS (P/N 019187-013)
- 208/240/277V MOTOR POWER HARNESS (P/N 019187-014)



- 115V 20VA TRANSFORMER (P/N 019436-004)
- 208/240V 20VA TRANSFORMER (P/N 019436-013)
- 277V 20VA TRANSFORMER (P/N 019436-007)



- LED WIRE, GROMMET .500" DIA (P/N 019965-004)



- CABLE ASSEMBLY, NET35 (P/N 228709-001)
- CABLE ASSEMBLY, NET12 (P/N 228709-002)

ALL METRIC DIMENSIONS () ARE SOFT CONVERTED. IMPERIAL DIMENSIONS ARE CONVERTED TO METRIC AND ROUNDED TO THE NEAREST MILLIMETER.

PROJECT:		PRICE
ENGINEER:		
CUSTOMER:		<i>KC</i>
SUBMITTAL DATE:		273527
SPEC. SYMBOL:		SEPT 2021
		FFUCA FFU COMPONENTS & ACCESSORIES

**FFUCA - FAN FILTER UNIT COMPONENTS & ACCESSORIES
MOTOR & BLOWER ASSEMBLY**

BACK TO INDEX

BACKWARD CURVED





	NOM SIZE UNITS	MOTOR	VOLTAGE	P/N
<input type="checkbox"/>	2x4, 2x3	ECM	115 208/240 277	503925-004
<input type="checkbox"/>	2x4, 2x3	PSC	115	503925-014
<input type="checkbox"/>	2x4, 2x3	PSC	208/240	503925-015
<input type="checkbox"/>	2x4, 2x3	PSC	277	503925-016

FORWARD CURVED



	NOM SIZE UNITS	MOTOR	VOLTAGE	P/N
<input type="checkbox"/>	2x4, 2x3	ECM	115 208/240 277	503927-001
<input type="checkbox"/>	2x2	ECM	115 208/240 277	504176-001
<input type="checkbox"/>	2x4, 2x3	PSC	115	503927-014
<input type="checkbox"/>	2x4, 2x3	PSC	208/240	503927-015
<input type="checkbox"/>	2x4, 2x3	PSC	277	503927-016
<input type="checkbox"/>	2x2	PSC	115	504176-014
<input type="checkbox"/>	2x2	PSC	208/240	504176-015
<input type="checkbox"/>	2x2	PSC	277	504176-016

ALL METRIC DIMENSIONS () ARE SOFT CONVERTED. IMPERIAL DIMENSIONS ARE CONVERTED TO METRIC AND ROUNDED TO THE NEAREST MILLIMETER.

PROJECT:		  273527	FFUCA FFU COMPONENTS & ACCESSORIES
ENGINEER:			
CUSTOMER:			
SUBMITTAL DATE:	SPEC. SYMBOL:		

**FFUCA - FAN FILTER UNIT COMPONENTS & ACCESSORIES
MOTOR**

BACK TO INDEX



MOTOR ECM TRI VOLTAGE
115/208/240/277 V
(P/N 019219-001)



MOTOR PSC - 115 V
(P/N 019152-002)
 MOTOR PSC - 208/240 V
(P/N 019589-002)
 MOTOR PSC - 277 V
(P/N 019153-002)

WHEEL



FORWARD CURVE WHEEL
NOM. 2x4, 2x3 UNITS
(P/N 100090-002)



BACKWARD CURVE WHEEL
NOM. 2x4, 2x3 UNITS
(P/N 100090-003)



FORWARD CURVE WHEEL
NOM. 2x2 UNIT
(P/N 100080-001)

ALL METRIC DIMENSIONS () ARE SOFT CONVERTED. IMPERIAL DIMENSIONS ARE CONVERTED TO METRIC AND ROUNDED TO THE NEAREST MILLIMETER.

PROJECT:		PRICE
ENGINEER:		
CUSTOMER:		<i>KC</i>
SUBMITTAL DATE:		273527
SPEC. SYMBOL:		SEPT 2021
		FFUCA FFU COMPONENTS & ACCESSORIES