

OHL | KD Series

DUAL STOP WEATHER LOUVER

MODEL OHL-KD100

FEATURES

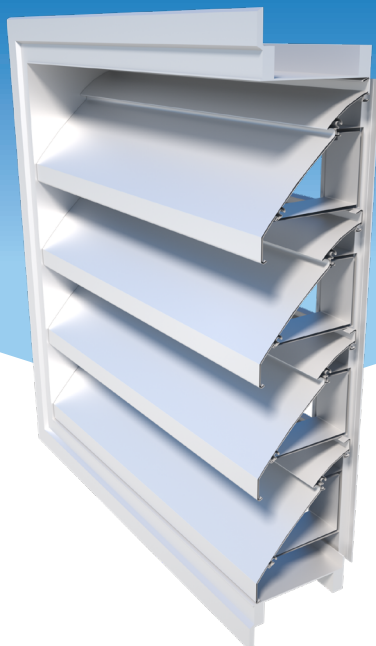
- Attractive Curved Blade Profile
- Obstructed Line of Sight
- Dual Weather Stop Blade
- Available in a knock down kit for assembly on site

CONSTRUCTION

The OHL - KD100 louver system is constructed entirely of 6063 T5 extruded aluminium, mechanically locked together ensuring a solid, resilient structure. All louvers are manufactured to the highest fabrication and performance standards.

OPTIONS

- Powder Coat finishes (Duratec warranty coatings available on request)
- Natural Anodised finish
- Aluminium or Stainless Steel bird mesh
- Aluminium Blanking



The Holyoake OHL - KD100 louver is an attractive multi-purpose louver which features the capacity for on site assembly. Based on proven Holyoake louver technology, the louver blade features one water stop on its profile and minimises any water carry over by overlapping the blades.

The large profile and 102mm blade spacing of the OHL - KD100 creates a bold line across the louver face which is architecturally pleasing. The slightly curved blade face enhances the architectural appeal of the louver.

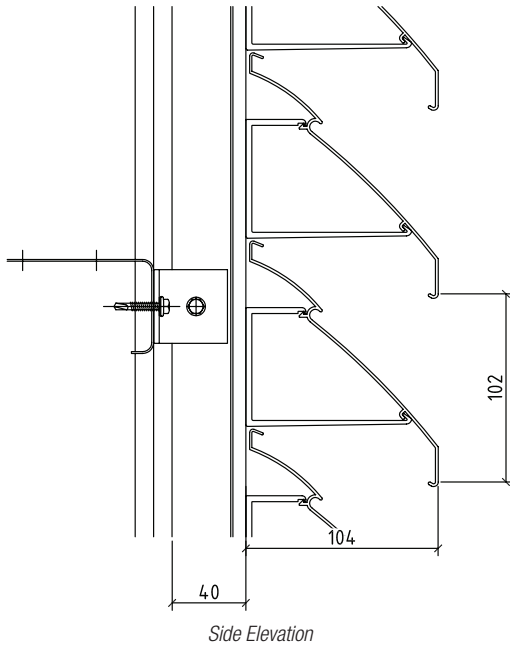
TYPICAL APPLICATIONS

The OHL - KD100 is ideally suited for larger applications where the deeper profile depth increases the weather protection performance. The larger profile also improves the visual aspect of the horizontal lines across the system when viewed from a distance.

The OHL - KD100 louver can be installed as a part of the Mechanical Services System for either intake or exhaust applications, or it can be installed purely as a sight screen to hide unsightly plant equipment. In the screening format, the louvers can be installed in the standard configuration, or to completely block the line of sight through the blades the system can be installed inverted.



DIMENSIONAL DATA



TESTING STANDARDS

AS/NZS 4740: 2000 Standard: Natural ventilators - Classification and performance

BS EN 13030: 2001 Standard: Ventilation for buildings - Terminals - Performance testing of louvers subjected to simulated rain

	Pressure Area Velocities	<1.0m/s	1.0 - 3.0m/s
	Water Ingress Efficiency	Class B	Class C
	Wind Load Rating	Level 1	

All louvers have been tested under a simulated exterior wind face velocity of 13m/s (as nominated by AS/NZS 4740:2000) alongside the simulated building intake louver velocities of 0.5m/s to 3.0m/s.

Intake louver velocities equate to the pressure area velocities nominated.

The OHL - KD100 uses the Holyoake "Concealed Mullion" system. This is stick built on site and once installed creates an unbroken line across the louver face in both width and height. Note: Subject to the installation of suitable supporting steelwork.